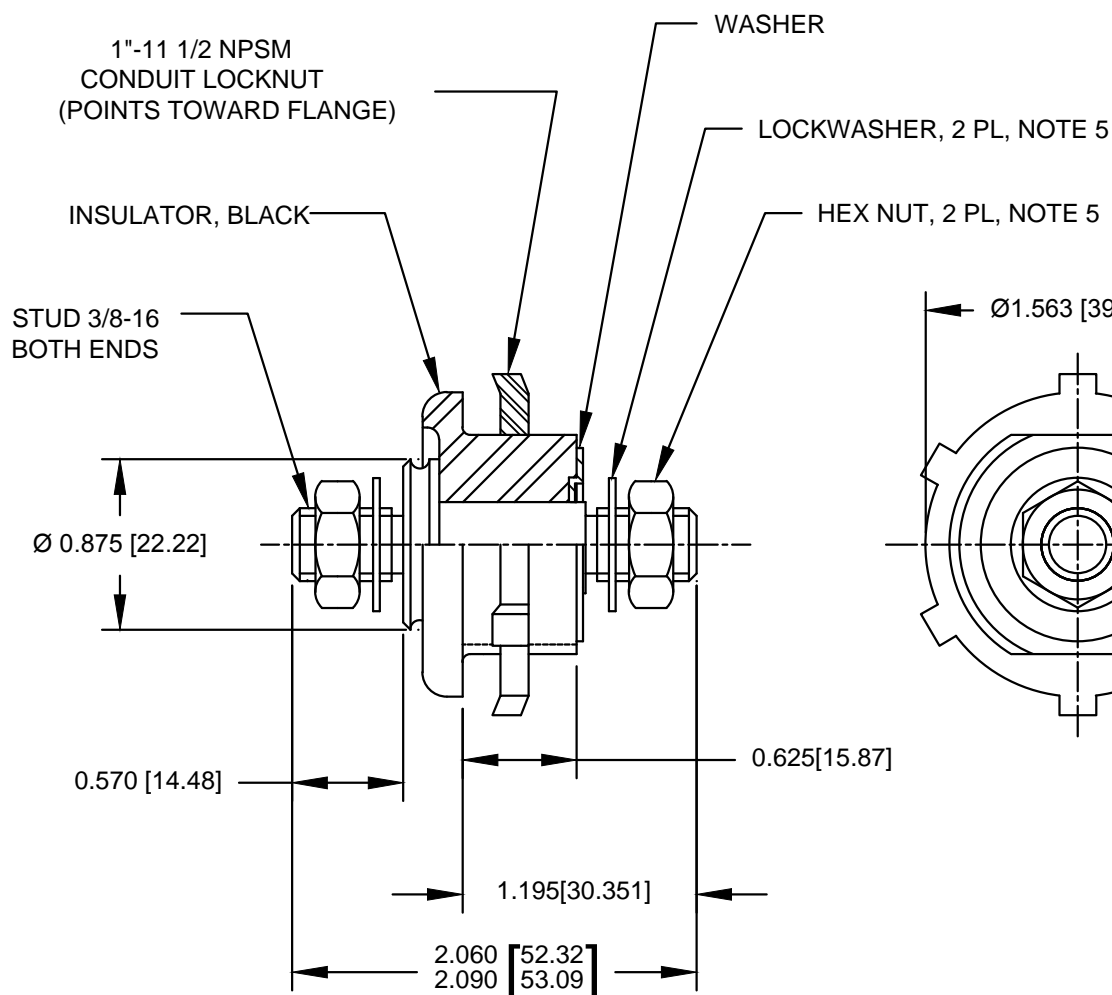
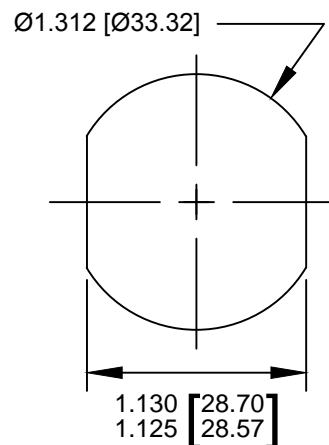


<b>Revision Control Record</b>			
Rev.	Description of Change	ECN No.	Date
<b>A</b>	<b>NEW RELEASED</b>	<b>15970</b>	<b>6/22/16</b>



#### NOTES:

1. ALL STEEL PARTS PLATED
2. ALL DIMENSIONS ARE REFERENCE ONLY
3. MOUNTING THREADS 1"-11 1/2 NPSM-  
MOUNTING TORQUE 10.8-13.5 Nm  
(8-10 FT LBS) NOT TO EXCEED  
13.5 Nm (10 FT LBS)
4. STUD 3/8-16 TIGHTENING TORQUE  
8.1-10.8 Nm (6-8 FT LBS)
5. PARTS SUPPLIED IN CARTON
6. HARDWARE SUPPLIED IN BAG



TYPICAL PANEL CUTOUT

**Tolerances** Unless otherwise specifically noted, the following are default tolerances;

- \* 2-place Decimal Dimensions +/- .02"
- \* 3-place Decimal Dimensions +/- .005"
- \* Angular Dimensions +/- 1.0 Deg.
- \* Metric: Refer to equivalent English Dimension Tolerance

>>> NOTE: All tolerances are Non-Cumulative. <<<

**Dimensional Units** All dimensions are expressed in inches except those shown in brackets (xxx) are expressed in millimeters

"REF." or an Asterisk (\*) = Non-Toleranced Reference Dimension, shown for clarification purposes only.

**PROPRIETARY INFORMATION** This Engineering Drawing, and the information contained herein, is proprietary to Cole Hersee Company and may not be disclosed, re-produced, or in any other way transferred or communicated to any other party without the express written consent of an authorized representative of Cole Hersee Company.

**DESIGN CONTROL** It is the responsibility of the individual using / referencing this drawing to assure that the noted design revision level agrees with the revision level of the Controlled Document (Master Drawing). This is a NON-CONTROLLED DOCUMENT unless otherwise specifically noted.

DO NOT SCALE - Dimensional variation may occur during printing / reproduction.

#### Special Characteristics:



Critical Characteristic, relating to Safety and/or Regulatory Compliance



Significant Characteristic relating to Process Control (SPC)



Key Characteristic relating to Form - Fit - Function as defined by Cole Hersee Company and/or the Customer

(Note that the identification of any Characteristics as being "Special" does not alter the requirement that ALL specified dimensions & tolerances must be met.)



**Cole Hersee Co.**

20 Old Colony Ave., South Boston, MA, 02127  
Phn: 617-268-2100 Web: www.colehersee.com

#### Description:

**FEED THRU STUD**

Drawing /  
Part No.:

**46211-14**

Current Rev.

**A**

Used On  
or Ref.:

Scale: **1:1**

Drawn By: **RG**

Date Drawn: **8/8/80**

Responsible Engineer: **N/A**

Pg. 1 of 1