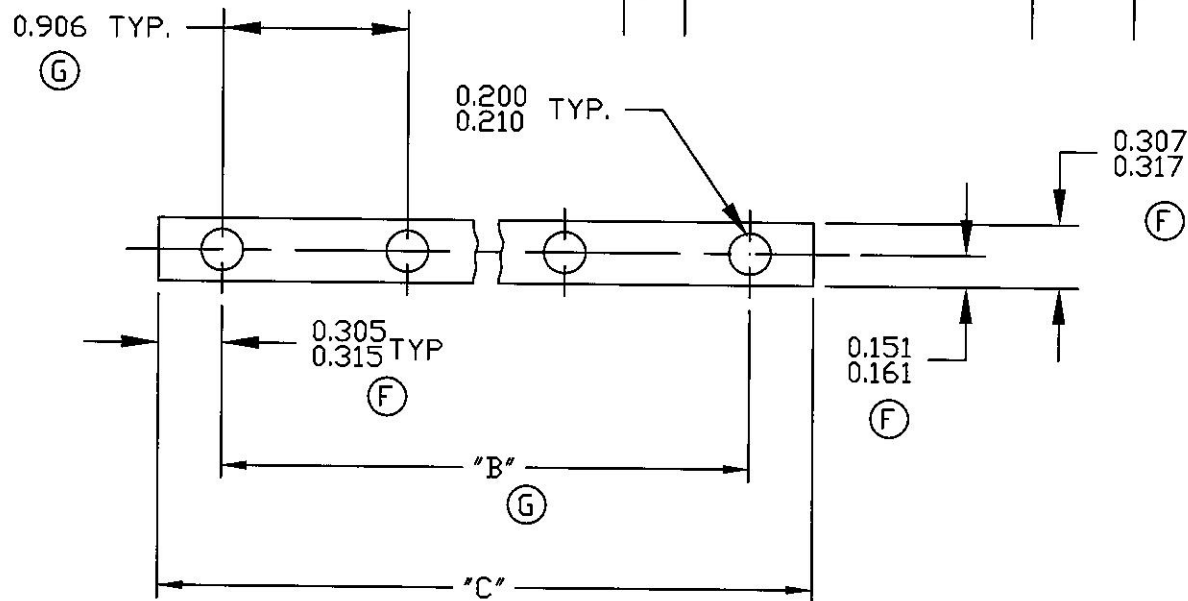


PART NUMBER	"A"	"B"	"C"	WT/M
86099-2	2	.906	1.53	9
86099-3	3	1.81	2.43	15
86099-4	4	2.72	3.34	20
86099-5	5	3.62	4.24	25
86099-6	6	4.53	5.15	31
86099-7	7	5.44	6.06	36
86099-8	8	6.34	6.96	41
86099-9	9	7.25	7.87	46
86099-10	10	8.15	8.77	52
86099-11	11	9.06	9.68	58
86099-12	12	9.97	10.59	63
86099-13	13	10.87	11.49	69
86099-14	14	11.78	12.40	74
86099-15	15	12.68	13.30	79
86099-16	16	13.59	14.21	85
86099-17	17	14.50	15.12	90
86099-18	18	15.40	16.02	96
86099-19	19	16.31	16.93	101
86099-20	20	17.21	17.83	106

Revision Control Record			
Rev.	Description of Change	ECN No.	Date
F	ADDED TOLERANCE	02173	4/10/02
G	ADDED DIMENSION	09171	3/10/09



#### NOTES:

1. MATERIAL: 0.062 (0.0595/0.0645) THICK  
X 0.312 1/4 HARD BRASS, CDA #260

COLUMN "A": NUMBER OF HOLES ON THE BUS BAR. (G)

COLUMN "B": DISTANCE FROM CENTER OF FIRST HOLE TO THE CENTER OF LAST HOLE ON BUS BAR. (G)

**Tolerances** Unless otherwise specifically noted, the following are default tolerances:  
 \* 2-place Decimal Dimensions  $\pm .02$ "  
 \* 3-place Decimal Dimensions  $\pm .005$ "  
 \* Angular Dimensions  $\pm 1.0$  Deg.  
 \* Metric: Refer to equivalent English Dimension Tolerance  
 >>> NOTE: All tolerances are Non-Cumulative. <<<

**Dimensional Units** All dimensions are expressed in inches except those shown in brackets (xxx) are expressed in millimeters

"REF." or an Asterisk (\*) = Non-Toleranced Reference Dimension, shown for clarification purposes only.

**PROPRIETARY INFORMATION** This Engineering Drawing, and the information contained herein, is proprietary to Cole Hersee Company and may not be disclosed, re-produced, or in any other way transferred or communicated to any other party without the express written consent of an authorized representative of Cole Hersee Company.

**DESIGN CONTROL** It is the responsibility of the individual using / referencing this drawing to assure that the noted design revision level agrees with the revision level of the Controlled Document (Master Drawing). This is a NON-CONTROLLED DOCUMENT unless otherwise specifically noted.

DO NOT SCALE - Dimensional variation may occur during printing / reproduction.

#### Key for Special Characteristics:



Critical Characteristic, relating to Safety and/or Regulatory Compliance



Significant Characteristic relating to Process Control (SPC)



Control Dimension relating to Form - Fit - Function as defined by Cole Hersee Company and/or the Customer

(Note that the identification of any Characteristics as being "Special" does not alter the requirement that ALL specified dimensions & tolerances must be met.)



**Cole Hersee Co.**

20 Old Colony Ave., South Boston, MA, 02127  
Phn: 617-268-2100 Web: [www.colehersee.com](http://www.colehersee.com)

Description:

**BUS BAR**

Drawing / Part No.:

**86099**

Current Rev.

**G**

Used On or Ref.: **30511**

Scale: **1:1**

Drawn By: **RW**

Date Drawn: **1/27/71**

Responsible Engineer:

Pg. 1 of 1