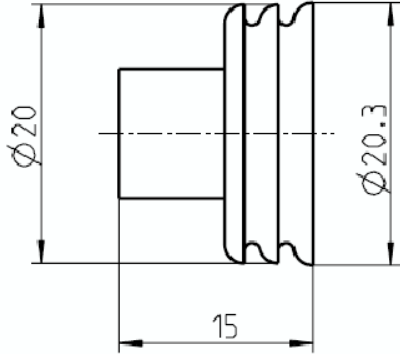
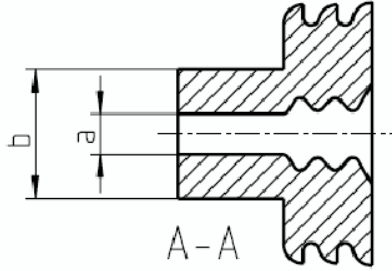
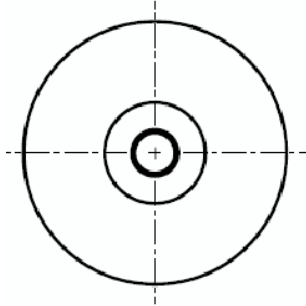


PART NUMBER	DIM "b"	DIM "a"	COLOR
868-906	Ø10.0	Ø4.4	GREY



METRIC
COMPONENT

UNLESS OTHERWISE SPECIFIED, DIMENSIONS ARE IN MILLIMETERS.
DIMENSIONS IN BRACKETS [] ARE INCHES
UNLESS OTHERWISE SPECIFIED, DIMENSIONS DO NOT INCLUDE PLATING.

CPK	ST	CP
© DENOTES CRITICAL CHARACTERISTICS. DENOTES CPK DIMENSIONS. -MINIMUM CPK VALUE DENOTES A CHARACTERISTIC THAT PROVIDES AN INDICATION OF PROCESS PERFORMANCE. PROCEDURE FOR MEASUREMENT AND TRACKING TO BE DEFINED IN LITTELFUSE INSPECTION INSTRUCTIONS DENOTES CP DIMENSIONS. -MINIMUM CP VALUE MUST BE WITHIN THE DIMENSIONAL LIMITATIONS SHOWN ON DRAWING AND INITIALLY LOCATED TO ALLOW FOR MAXIMUM TOOL LIFE		

NO	COMPONENT NO	DESCRIPTION	QTY/M	U/M

BILL OF MATERIAL			
LTR		DATE	
A		03/20/09	
COPIES TO		MATERIAL SPEC	
1 9 18		SILICON RUBBER, SHORE 45:5	
2 10 19		FINISH	
3 12 20		SCALE	
4 13 21		DATE 03/20/09	
5 14 23		SUPER DR	
6 15 33		FINISH GOOD WT	
7 16 43		TOLERANCES UNLESS OTHERWISE SPECIFIED DIN 7715-M2	
8 17 53		@LWSP/PIECE	

3RD ANGLE PROJECTION		TITLE	
		WIRE SEAL FOR Ø 6 - 10mm	
LITTELFUSE		REVISION DRWG. NO.	
		A 868-906	

CAD GENERATED DRAWING - NO PENCIL CHANGES ALLOWED