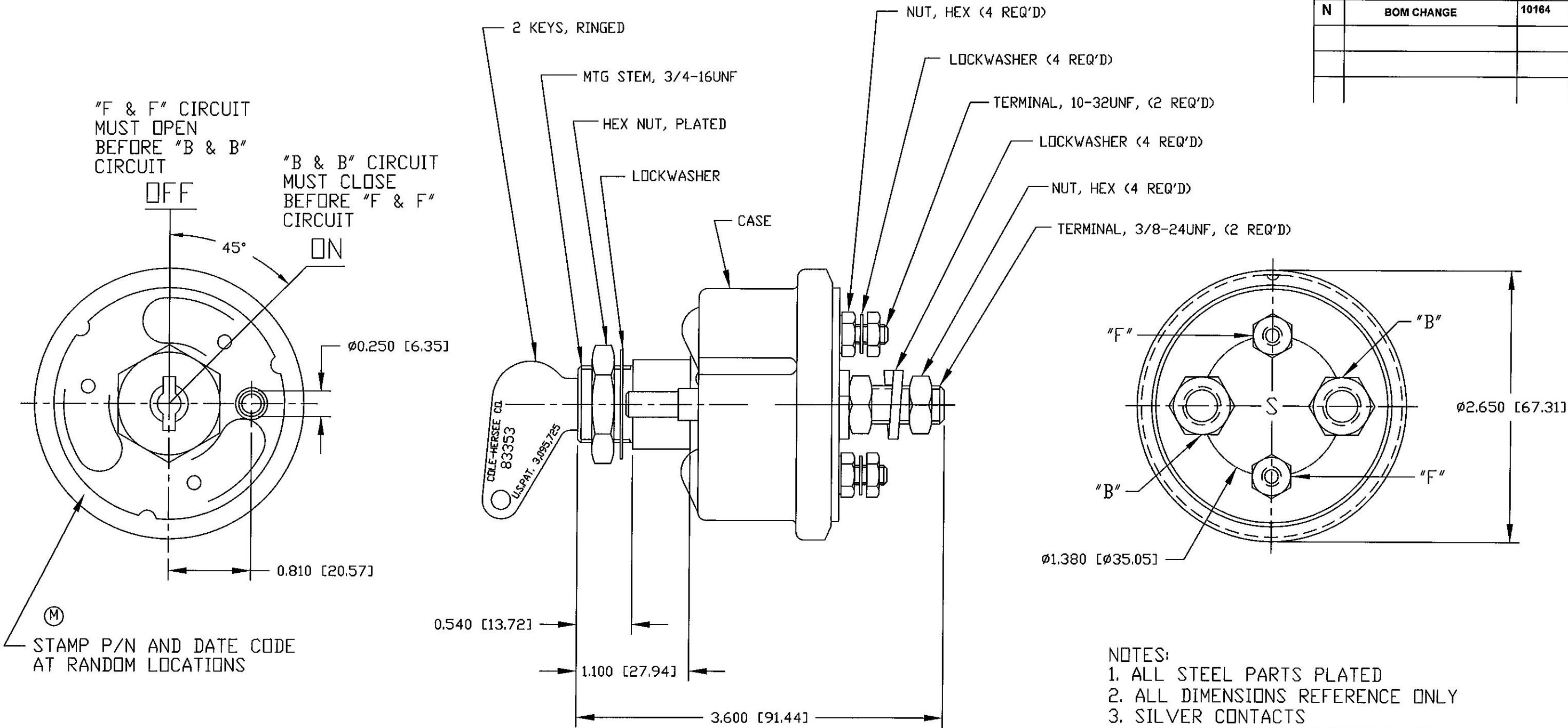


Revision Control Record			
Rev.	Description of Change	ECN No.	Date
M	ADDED NOTE WITH STAMP LOCATION	02168	4/05/02
N	BOM CHANGE	10164	4/30/10



<b>Tolerances</b> Unless otherwise specifically noted, the following are default tolerances: * 2-place Decimal Dimensions $\pm 0.02$ " * 3-place Decimal Dimensions $\pm 0.005$ " * Angular Dimensions $\pm 1.0$ Deg. * Metric: Refer to equivalent English Dimension Tolerance >>> NOTE: All tolerances are Non-Cumulative. <<<	
<b>Dimensional Units</b> All dimensions are expressed in inches except those shown in brackets (xxx) are expressed in millimeters	
<b>"REF." or an Asterisk (*)</b> = Non-Toleranced Reference Dimension, shown for clarification purposes only.	
Used On or Ref.:	Scale: <b>1:1</b>

<b>PROPRIETARY INFORMATION</b> This Engineering Drawing, and the information contained herein, is proprietary to Cole Hersee Company and may not be disclosed, re-produced, or in any other way transferred or communicated to any other party without the express written consent of an authorized representative of Cole Hersee Company.	
<b>DESIGN CONTROL</b> It is the responsibility of the individual using / referencing this drawing to assure that the noted design revision level agrees with the revision level of the Controlled Document (Master Drawing). This is a NON-CONTROLLED DOCUMENT unless otherwise specifically noted.	
<b>DO NOT SCALE</b> - Dimensional variation may occur during printing / reproduction.	
Drawn By: <b>CF</b>	Date Drawn: <b>6/27/69</b>

<b>Key for Special Characteristics:</b> CC Critical Characteristic, relating to Safety and/or Regulatory Compliance X Significant Characteristic relating to Process Control (SPC) CD Control Dimension relating to Form - Fit - Function as defined by Cole Hersee Company and/or the Customer	
(Note that the identification of any Characteristics as being "Special" does not alter the requirement that ALL specified dimensions & tolerances must be met.)	
Responsible Engineer:	Pg. 1 of 1

<b>Cole Hersee Co.</b> 20 Old Colony Ave., South Boston, MA, 02127 Phn: 617-268-2100 Web: www.colehersee.com	
<b>Description:</b> <b>SWITCH, MASTER DISCONNECT</b>	
<b>Drawing / Part No.:</b> <b>75904-02</b>	<b>Current Rev.:</b> <b>N</b>