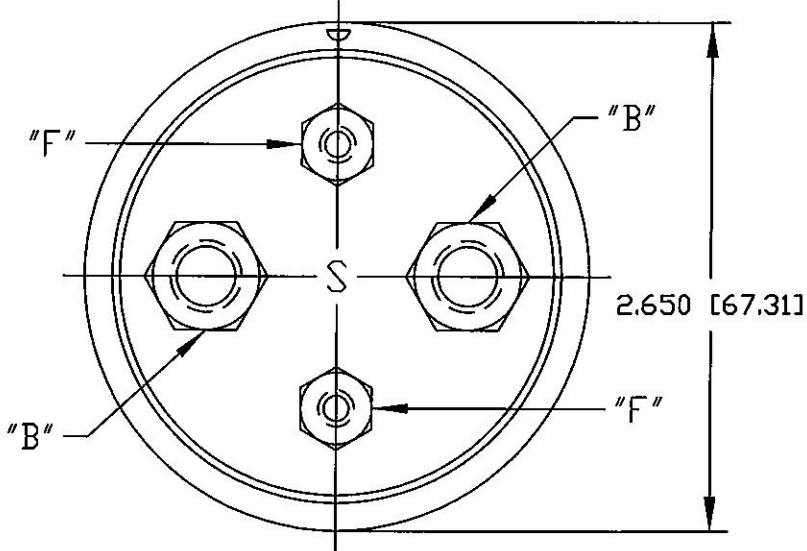
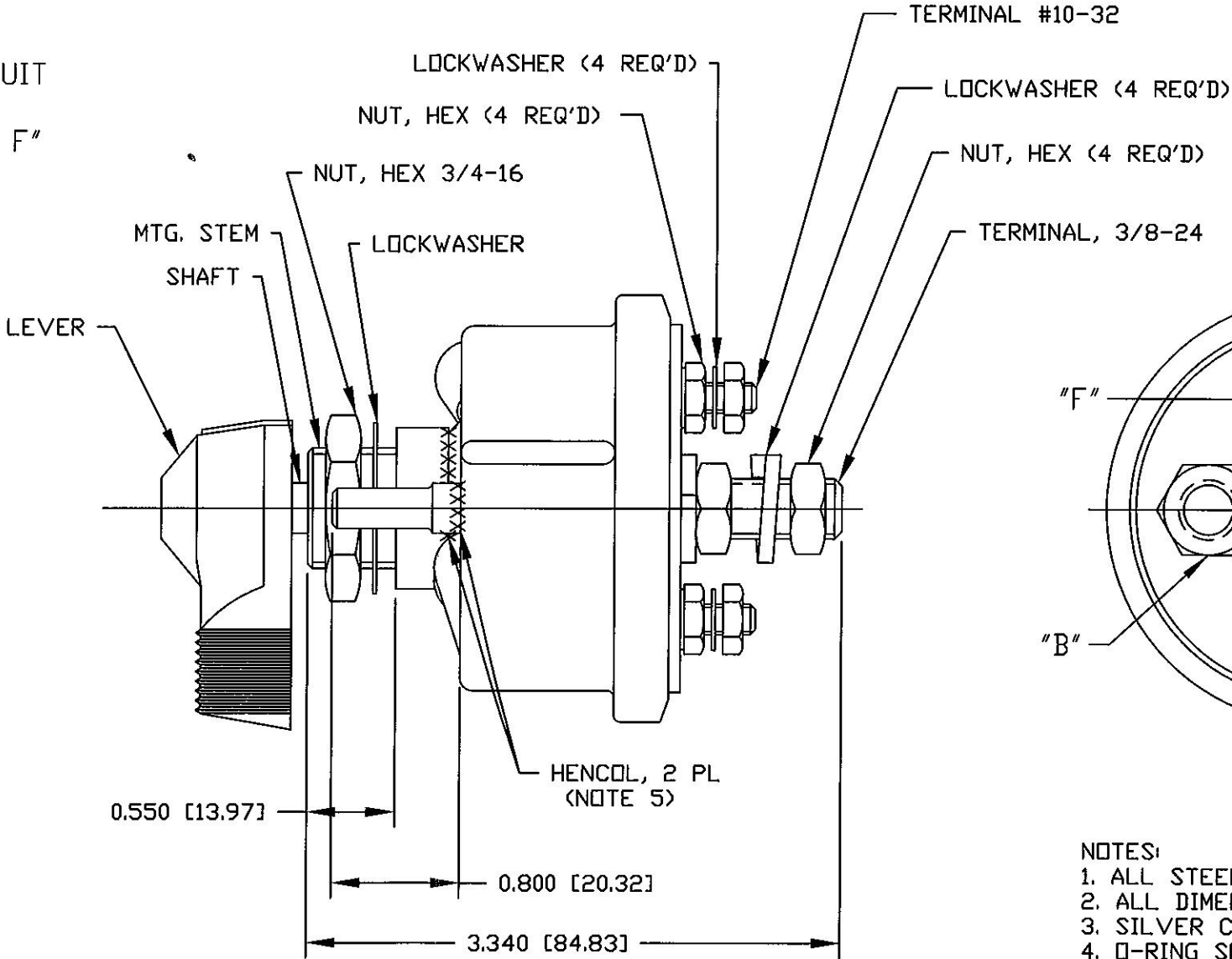
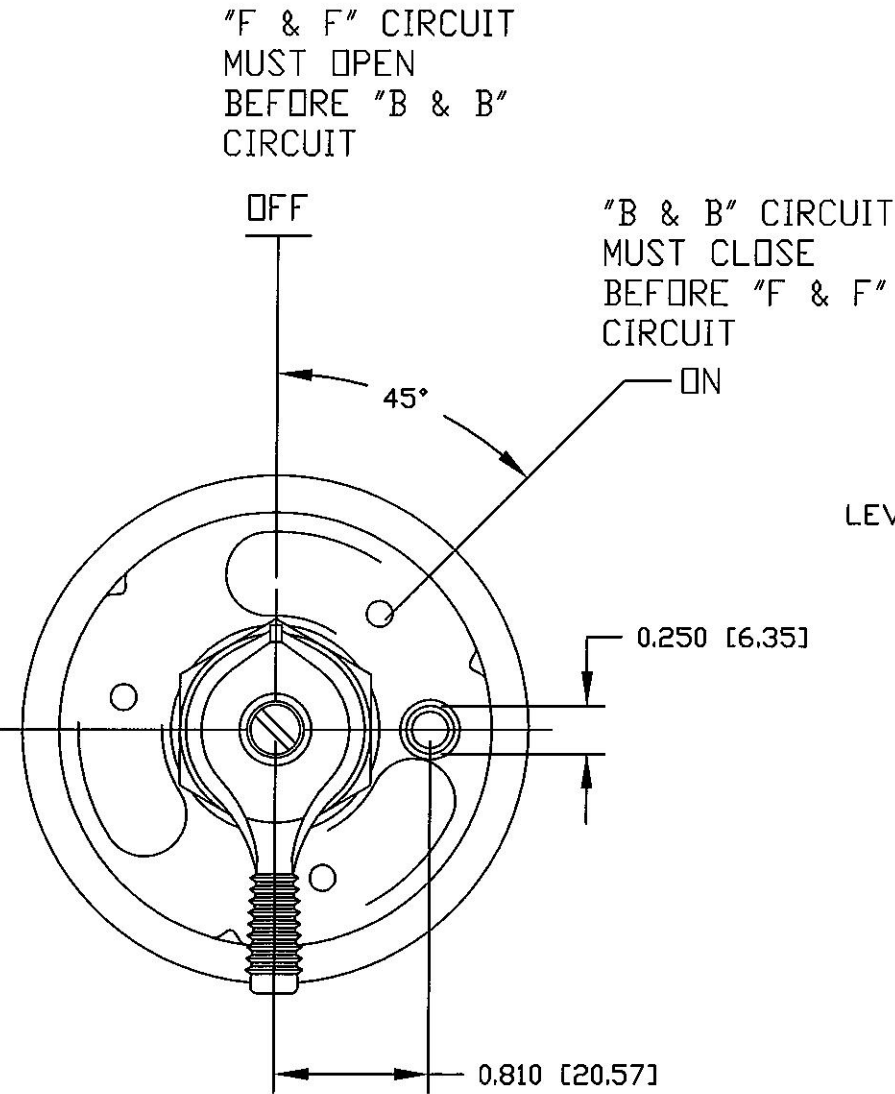


Revision Control Record			
Rev.	Description of Change	ECN No.	Date
A	CHANGE RATING NOTE	05199	05/12/05
B	BOM UPDATE	05445	11/21/05
C	BOM CHANGE	10170	4/30/10






- NOTES:
1. ALL STEEL PARTS PLATED
  2. ALL DIMENSIONS REFERENCE
  3. SILVER CONTACT SURFACES
  4. O-RING SEALED AT MOUNTING STEM AND TERMINAL INSULATOR
  5. HENCOL SEAL APPLIED INTERNALLY TO CASE BUSHING AND PIN JOINTS
  6. FOR USE WITH ALTERNATOR OR GENERATOR SYSTEMS

CONTINUOUS RATING:  
6-12-24-36 VOLT DC,  
LARGE STUDS ('B' TERMINALS): 175 AMPS<sup>(A)</sup>  
SMALL STUDS ('F' TERMINALS): 20 AMPS

INTERMITTENT RATING:  
6-12-24-36 VOLTS DC,  
LARGE STUDS ('B' TERMINALS): 1000 AMPS<sup>(A)</sup>  
15 SEC 'ON', 5 MIN 'OFF'

<p><b>Tolerances</b> Unless otherwise specifically noted, the following are default tolerances:</p> <ul style="list-style-type: none"> <li>• 2-place Decimal Dimensions <math>\pm 0.02</math>"</li> <li>• 3-place Decimal Dimensions <math>\pm 0.005</math>"</li> <li>• Angular Dimensions <math>\pm 1.0</math> Deg.</li> <li>• Metric: Refer to equivalent English Dimension Tolerance</li> </ul> <p>&gt;&gt;&gt; NOTE: All tolerances are Non-Cumulative. &lt;&lt;&lt;</p> <p><b>Dimensional Units</b> All dimensions are expressed in inches except those shown in brackets (xxx) are expressed in millimeters</p> <p><b>"REF." or an Asterisk (*)</b> = Non-Toleranced Reference Dimension, shown for clarification purposes only.</p>	
Used On or Ref.:	EX27143

<p><b>PROPRIETARY INFORMATION</b> This Engineering Drawing, and the information contained herein, is proprietary to Cole Hersee Company and may not be disclosed, re-produced, or in any other way transferred or communicated to any other party without the express written consent of an authorized representative of Cole Hersee Company.</p> <p><b>DESIGN CONTROL</b> It is the responsibility of the individual using / referencing this drawing to assure that the noted design revision level agrees with the revision level of the Controlled Document (Master Drawing). This is a NON-CONTROLLED DOCUMENT unless otherwise specifically noted.</p> <p><b>DO NOT SCALE</b> - Dimensional variation may occur during printing / reproduction.</p>	
Drawn By:	JRF
Date Drawn:	05/12/99

<p><b>Special Characteristics:</b></p> <p> Critical Characteristic, relating to Safety and/or Regulatory Compliance</p> <p> Significant Characteristic relating to Process Control (SPC)</p> <p> Control Dimension relating to Form - Fit - Function as defined by Cole Hersee Company and/or the Customer</p> <p>(Note that the Identification of any Characteristics as being "Special" does not alter the requirement that ALL specified dimensions &amp; tolerances must be met.)</p>	
Responsible Engineer:	JC

<p><b>Cole Hersee Co.</b> 20 Old Colony Ave., South Boston, MA, 02127 Phn: 617-268-2100 Web: www.colehersee.com</p>	
<p><b>Description:</b></p> <p>SW, MASTER DISCONNECT</p>	
<p><b>Drawing / Part No.:</b></p> <p>75904-11</p>	<p><b>C</b></p>