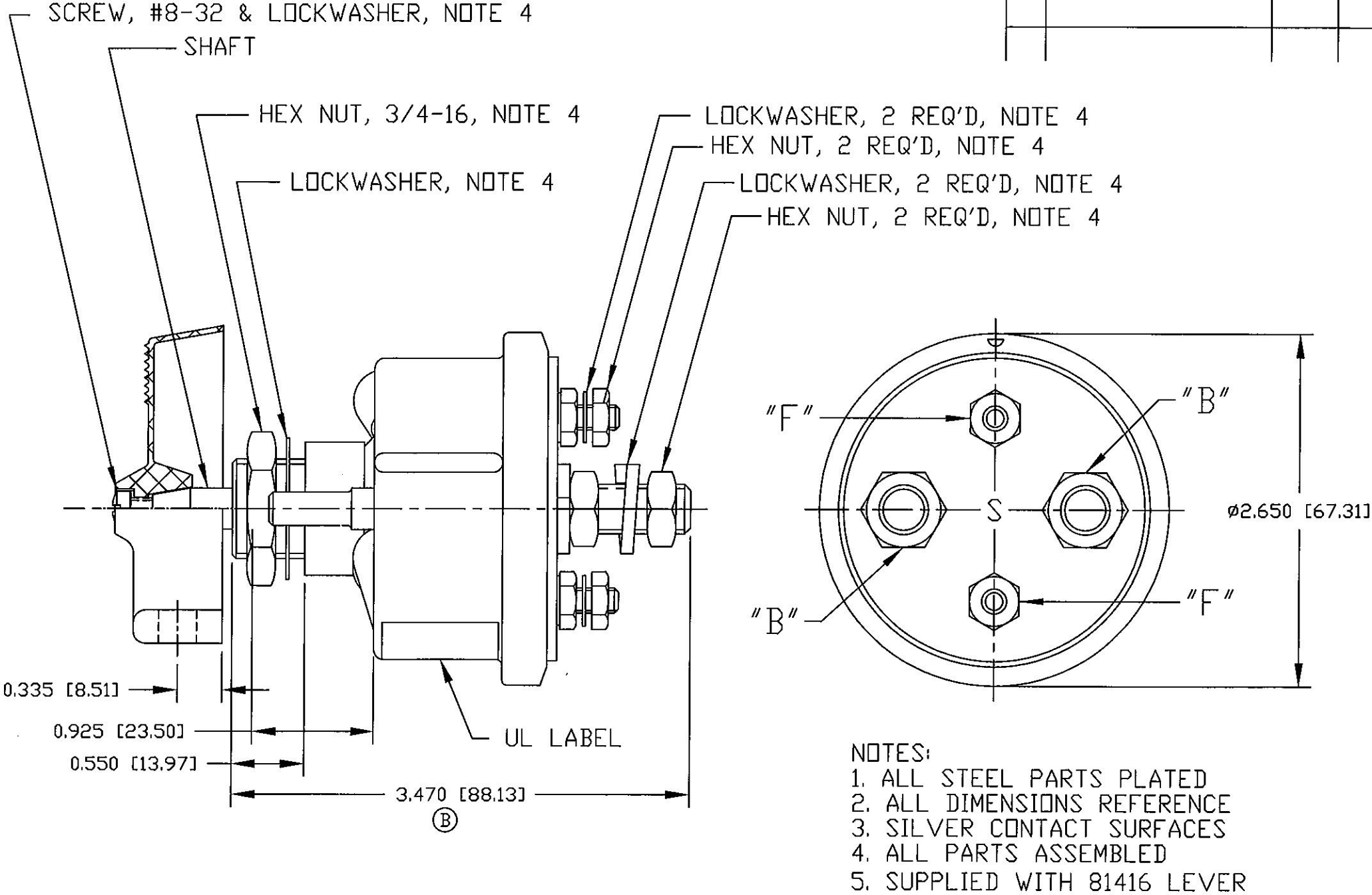
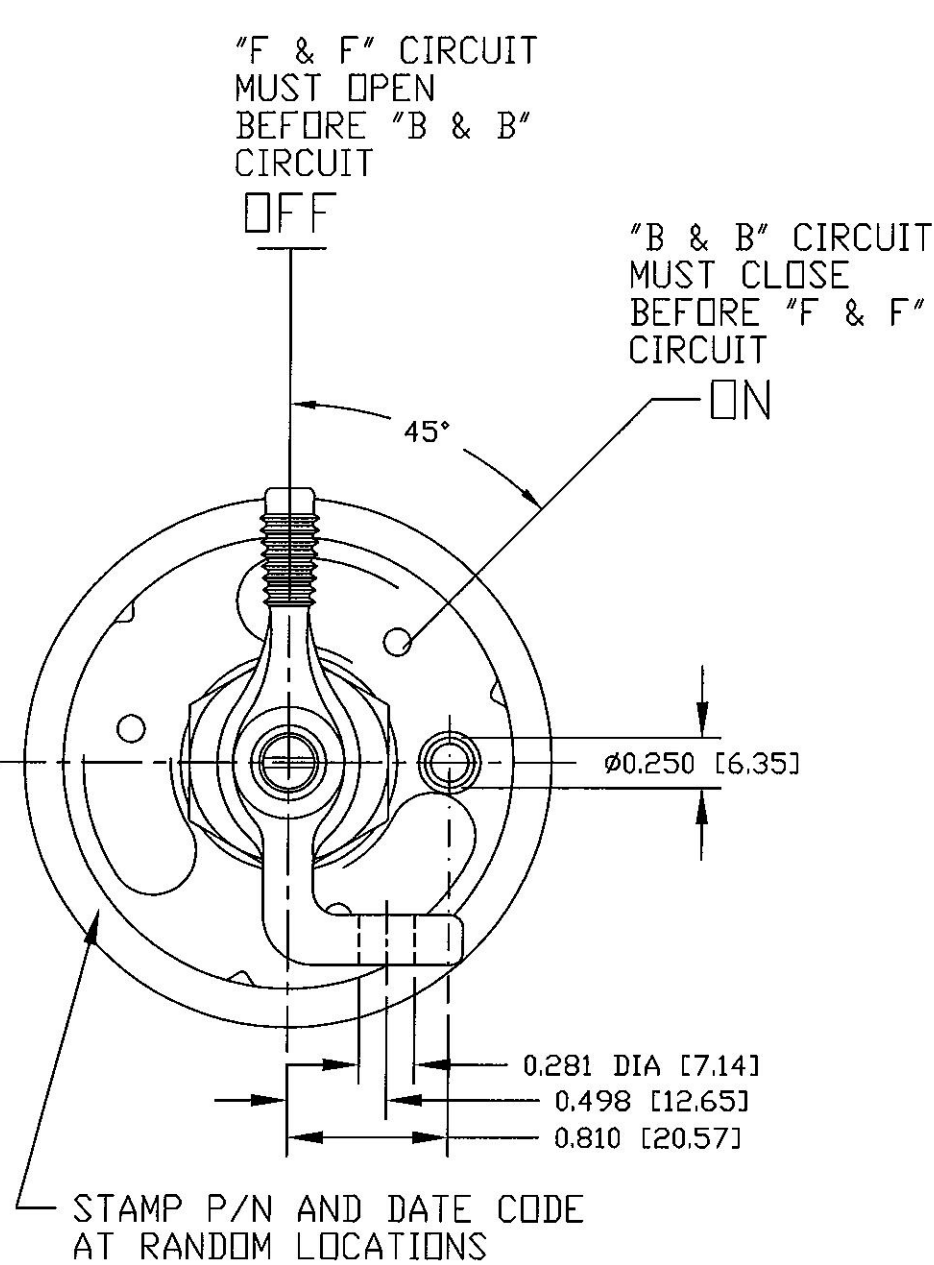






Revision Control Record			
Rev.	Description of Change	ECN No.	Date
A	RELEASE NEW PART	04435	10/26/04
B	REVISED MTG STEM & DIM	07457	11/16/07
C	BOM CHANGE	10171	4/30/10



CONTINUOUS RATING:  
6-12-24-36 VOLTS DC,  
LARGE STUDS ("B" TERMINALS): 125 AMPS  
SMALL STUDS ("F" TERMINALS): 20 AMPS

INTERMITTENT RATING:  
6-12-24-36 VOLTS DC,  
LARGE STUDS ("B" TERMINALS): 800 AMPS  
15 SEC "ON", 5 MIN "OFF"

<p><b>Tolerances</b> Unless otherwise specifically noted, the following are default tolerances;</p> <ul style="list-style-type: none"><li>• 2-place Decimal Dimensions <math>\pm .02</math>"</li><li>• 3-place Decimal Dimensions <math>\pm .005</math>"</li><li>• Angular Dimensions <math>\pm 1.0</math> Deg.</li><li>• Metric: Refer to equivalent English Dimension Tolerance</li></ul> <p>&gt;&gt;&gt; NOTE: All tolerances are Non-Cumulative. &lt;&lt;&lt;</p> <p><b>Dimensional Units</b> All dimensions are expressed in inches except those shown in brackets (xxx) are expressed in millimeters</p> <p><b>"REF." or an Asterisk (*)</b> = Non-Toleranced Reference Dimension, shown for clarification purposes only.</p>		<p><b>PROPRIETARY INFORMATION</b> This Engineering Drawing, and the information contained herein, is proprietary to Cole Hersee Company and may not be disclosed, re-produced, or in any other way transferred or communicated to any other party without the express written consent of an authorized representative of Cole Hersee Company.</p> <p><b>DESIGN CONTROL</b> It is the responsibility of the individual using / referencing this drawing to assure that the noted design revision level agrees with the revision level of the Controlled Document (Master Drawing). This is a NON-CONTROLLED DOCUMENT unless otherwise specifically noted.</p> <p><b>DO NOT SCALE</b> - Dimensional variation may occur during printing / reproduction.</p>		<p><b>Key for Special Characteristics:</b></p> <div> Critical Characteristic, relating to Safety and/or Regulatory Compliance</div> <div> Significant Characteristic relating to Process Control (SPC)</div> <div> Control Dimension relating to Form - Fit - Function as defined by Cole Hersee Company and/or the Customer</div> <p>(Note that the Identification of any Characteristics as being "Special" does not alter the requirement that ALL specified dimensions &amp; tolerances must be met.)</p>		<div><b>Cole Hersee Co.</b> 20 Old Colony Ave., South Boston, MA, 02127 Phn: 617-268-2100 Web: <a href="http://www.colehersee.com">www.colehersee.com</a></div>	
						<p><b>Description:</b></p> <p><b>SW, MASTER DISCONNECT</b></p>	
<p>Ref: EX28037</p>		<p>Scale: 1:1</p>		<p>Drawn By: DE</p>		<p>Date Drawn: 8/6/04</p>	
				<p>Responsible Engineer:</p>		<p>Pg. 1 of 1</p>	
						<p><b>Drawing / Part No.:</b> 75904-12</p>	
						<p><b>Current Rev.</b> C</p>	