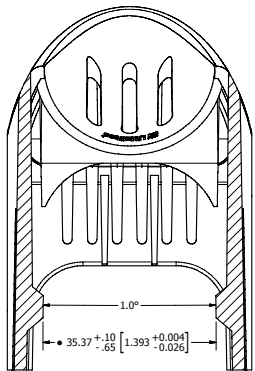
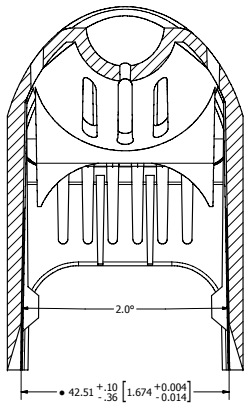


REVISION	
REV	DATE
A	04/20/2010
B	05/20/2010

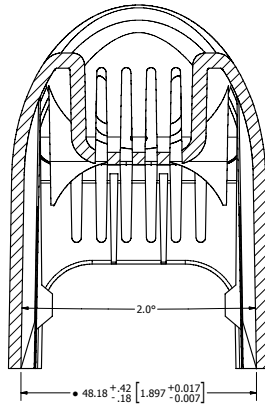
DESCRIPTION	
REVISION	DESCRIPTION
A	REVISION
B	REVISION



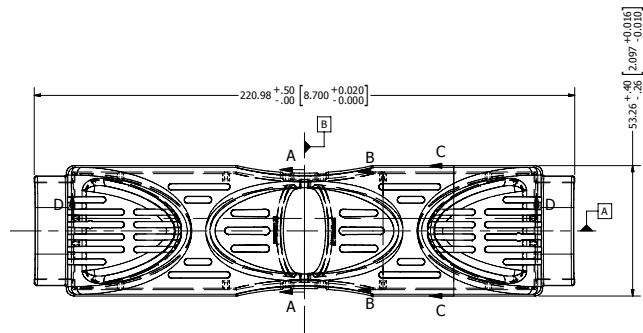
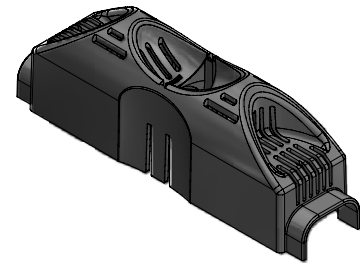
SECTION A-A
SCALE 2 : 1



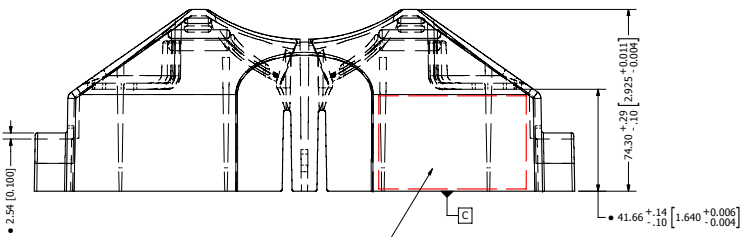
SECTION B-B
SCALE 2 : 1



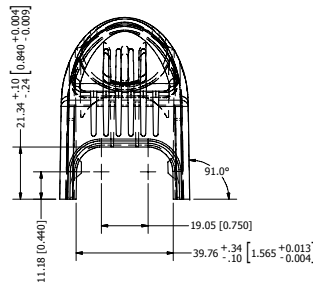
SECTION C-C
SCALE 2 : 1



SECTION D-D
SCALE 1 : 1



PRINT PRODUCT INFORMATION ON ONE
SIDE OF PART, SEE GENERAL NOTE 1



GENERAL NOTES:

1. BODY PRINT PRODUCT INFORMATION IN WHITE ONE SIDE IN THE AREA INDICATED (SEE LS-000084)
2. PRINTING TO BE CLEAR, LEGIBLE, AND NOT SMEARED
3. INDIVIDUAL PACKAGING BOX MUST BE OF THE APPROPRIATE SIZE CORRESPONDING TO PART DIMENSIONS
4. APPLY BOX LABEL TO THE FRONT SIDE OF BOX (SEE LS-000065)

- NOTES:
1. TOOLING TO BE BUILT PER MATH DATA PROVIDED BY LITTELFUSE. GEOMETRY PER MATH TO BE WITHIN $\pm 0.25 [0.010]$ UNLESS OTHERWISE SPECIFIED. DIMENSIONS SHOWN FOR INSPECTION PURPOSES ONLY.
 2. DRAFT ANGLES TO BE PER LITTELFUSE MATH DATA, UNLESS OTHERWISE SPECIFIED.
 3. PARTING LINES, KNOCKOUT PINS AND GATE LOCATION TO BE APPROVED BY LITTELFUSE ENGINEERING PRIOR TO TOOL CONSTRUCTION.
 4. PARTING LINES, KNOCKOUT PINS, AND LIFTER FLASH SHALL BE 0.13 MAX, UNLESS OTHERWISE SPECIFIED.
 5. CORNERS SHOWN SHARP MAY HAVE A 0.25 RADIUS MAX, UNLESS OTHERWISE SPECIFIED BY LITTELFUSE ENGINEERING.
 6. ALL CAVITIES SHALL BE IDENTIFIED. CHECK WITH LITTELFUSE ENGINEERING FOR PREFERRED LOCATION.
 7. PARTS TO BE CLEAN AND FREE OF CRACKS, FOREIGN MATTER, CHIPS, WELD OR FLOW LINES, SINK, DISCOLORATION, PIN HOLES, VOIDS, ROUGHNESS OR WARPAGE UNLESS ACCEPTED BY LITTELFUSE ENGINEERING.
 8. DIMENSIONS TO BE MEASURED AT LOCATION OF MAXIMUM DRAFT, UNLESS OTHER SPECIFIED BY LITTELFUSE ENGINEERING.
 9. PACKAGING CARTON CONTAINING THIS PART TO BE MARKED WITH PART NUMBER AND CURRENT REVISION.
 10. THE Δ SYMBOL INDICATES THE DIMENSION NUMBER FOR INSPECTION PURPOSES.
 11. MAXIMUM REGROUND ALLOWED: 25%

● DENOTES CRITICAL CHARACTERISTICS.	
CPK	DENOTES CPK DIMENSIONS. MINIMUM CPK VALUE
①	DENOTES A CHARACTERISTIC THAT PROVIDES AN INDICATION OF PROCESS PERFORMANCE. PROCEDURE FOR MEASUREMENT AND TRACKING TO BE DEFINED IN LITTELFUSE INSPECTION INSTRUCTIONS.
CP	DENOTES CP DIMENSIONS. MINIMUM CP VALUE MUST BE WITHIN THE DIMENSIONAL LIMITATIONS SHOWN ON DRAWING AND INITIALLY LOCATED TO ALLOW FOR MAXIMUM TOOL LIFE.
MATERIAL SPEC	FINISH
UNION 400000	COLOR: BASIC BLACK BK3086
SCALE	SCALE
1/2"=1"	1/2"=1"
DATE	DATE
04/20/2010	04/20/2010
DESIGNED BY	DESIGNED BY
04/20/2010	04/20/2010
UNLESS OTHERWISE SPECIFIED, DIMENSIONS ARE IN MILLIMETERS. DIMENSIONS IN BRACKETS () ARE INCHES DIMENSIONING AND DO NOT INCLUDE PLATING TOLERANCING TO BE INTERPRETED IN ACCORDANCE WITH ANSI Y14.5M-1994.	
TOLERANCE UNLESS OTHERWISE SPECIFIED	
ONE PLACE DEC: $\pm .25 [0.01]$	
TWO PLACE DEC: $\pm .01 [0.001]$	
ANGULAR: $\pm 1^\circ$	
TITLE	600V CLASS T-400A FUSEBLOCK COVER
Littelfuse	REPAIRMAN, ILLINOIS 60104
REVISION	REVISION
B	B
DWG NO.	DWG NO.
LT60400FBC	LT60400FBC