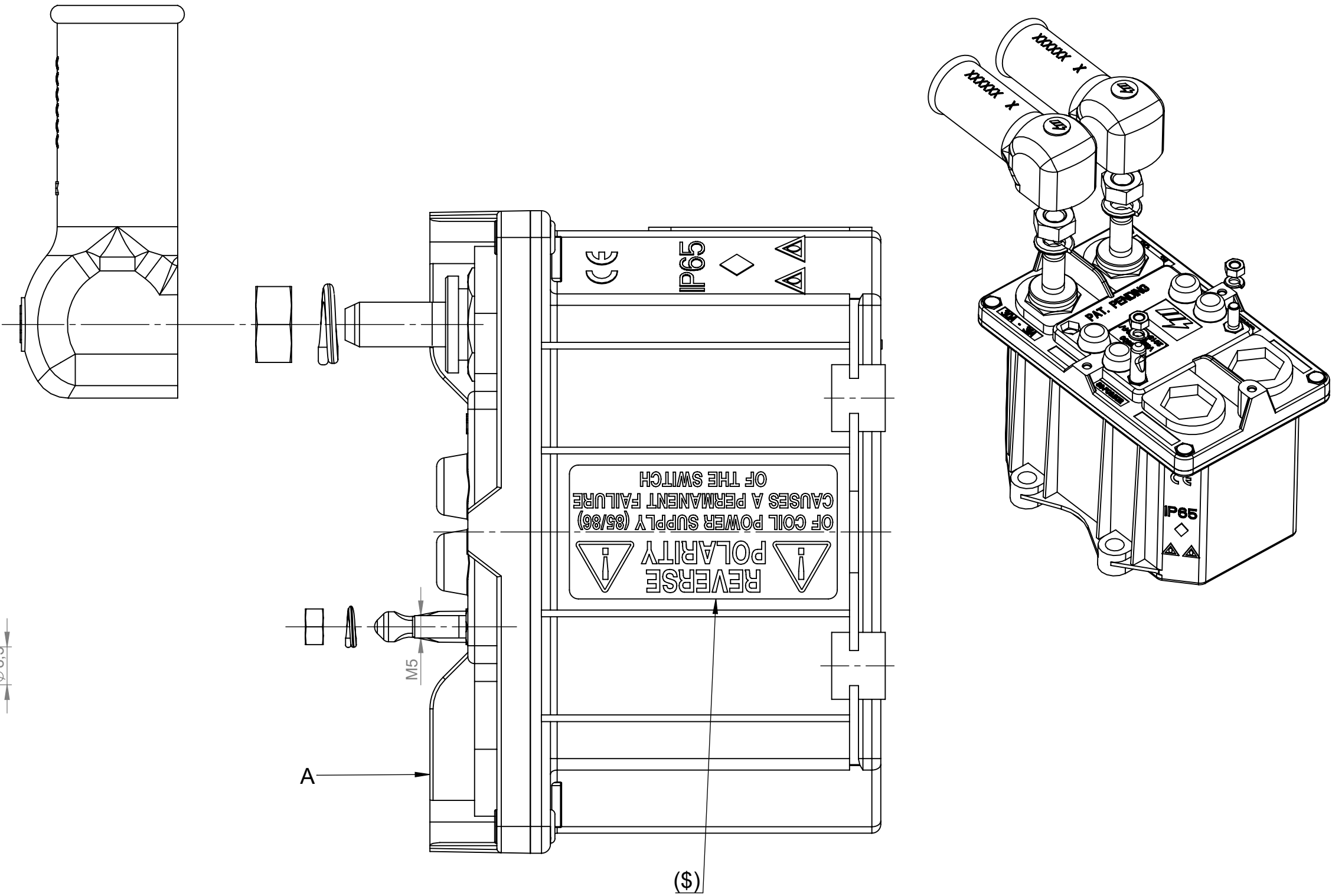
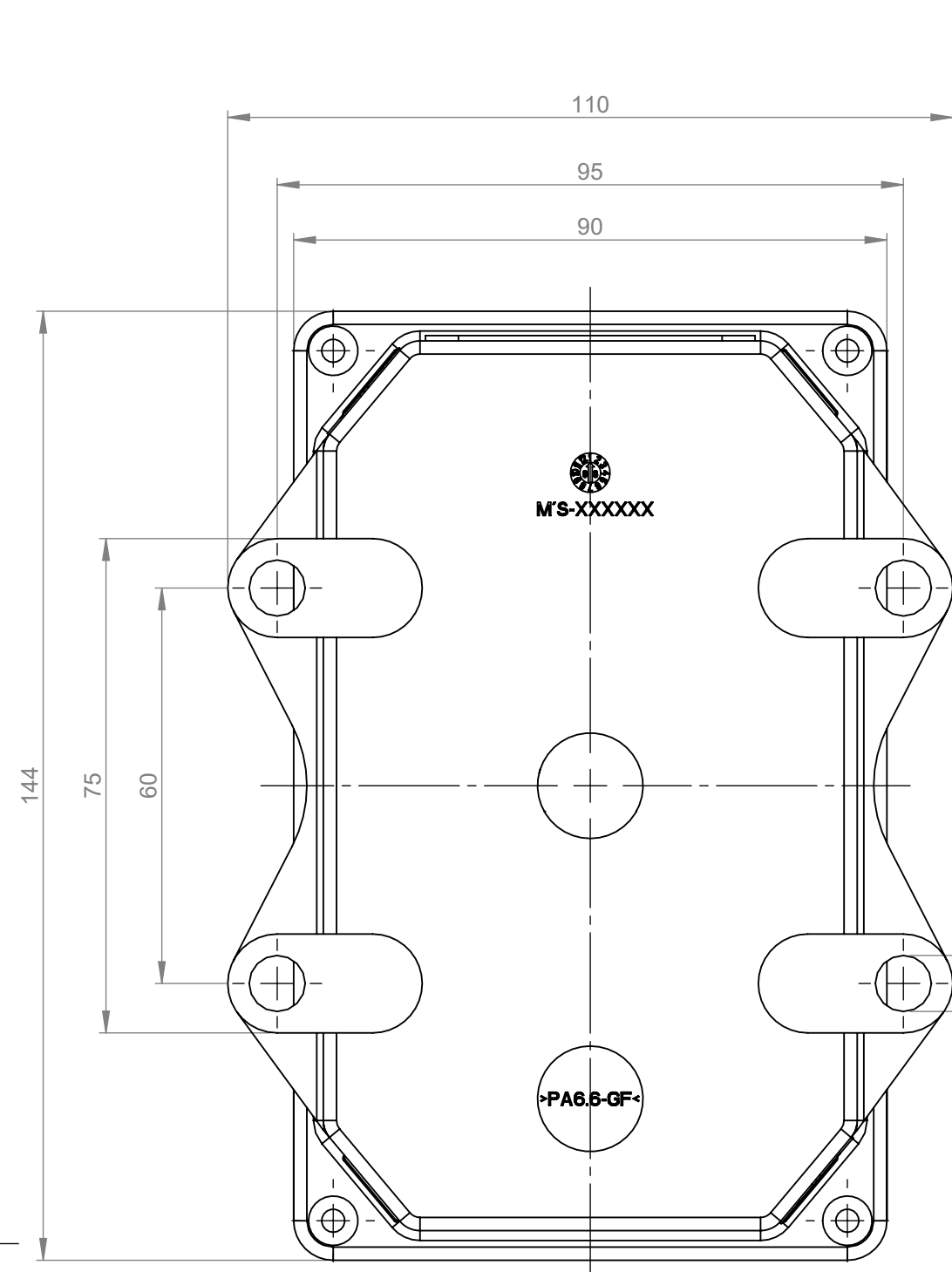


REVISIONS				
REV.	DESCRIPTION	DATE	DESIGNED	APPROVED
A	FIRST ISSUE OF OUTLINE DRAWING	25-June-2020	Gasparini	Tinto



MECHANICAL CHARACTERISTICS

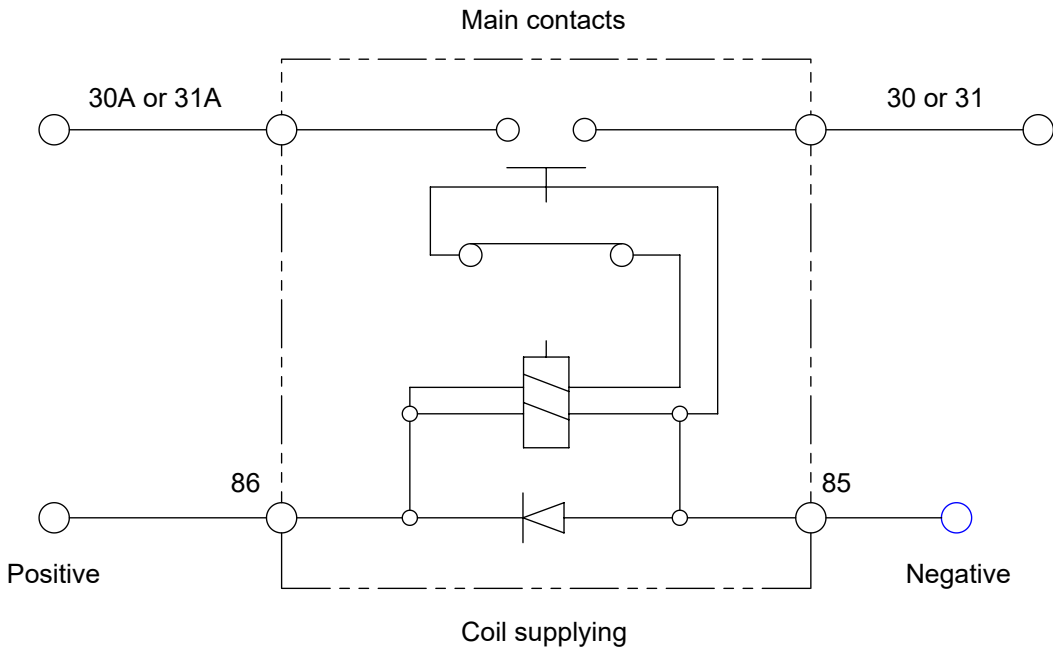
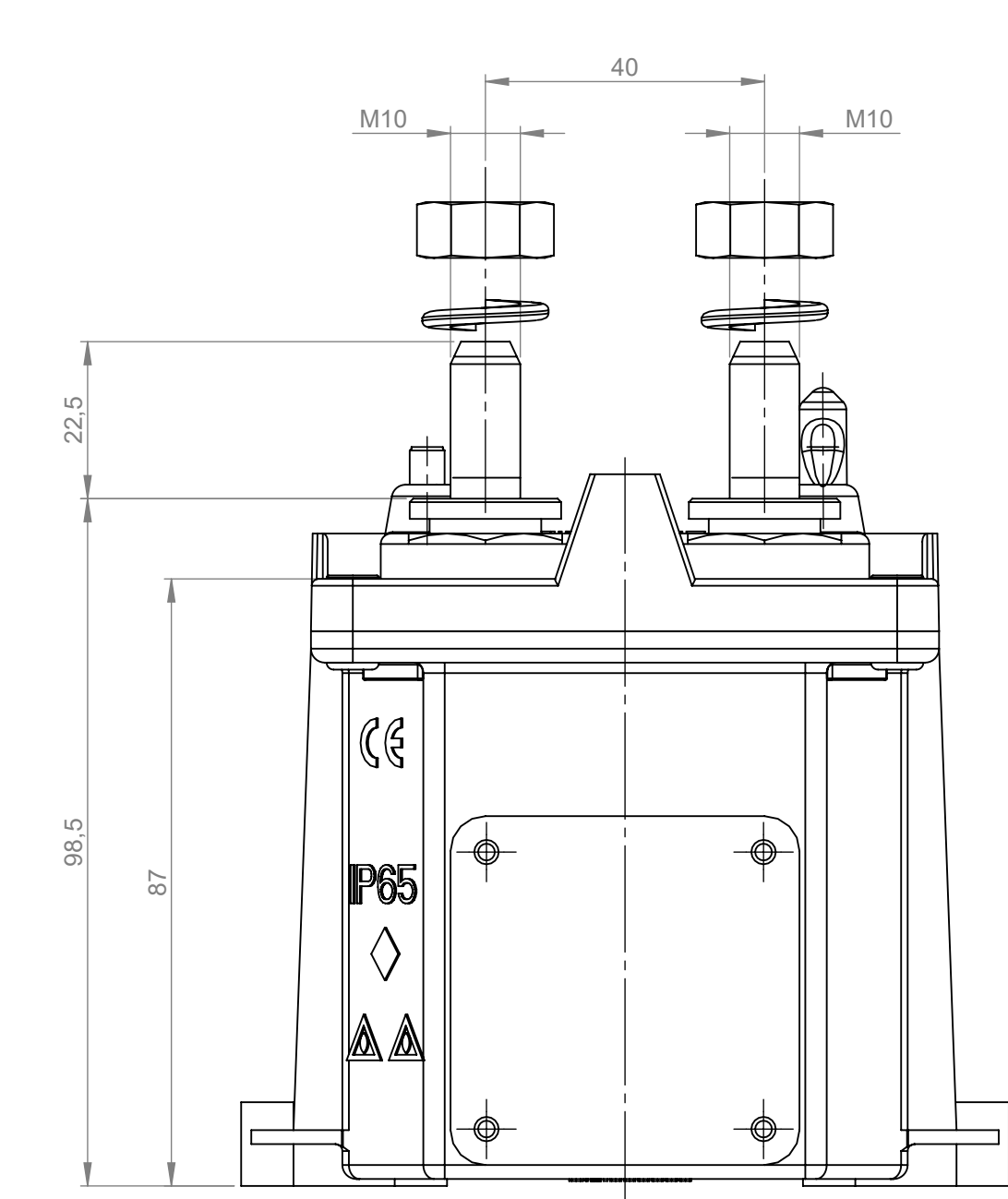
- Number of mechanical and electrical operations: 100.000
- Tightening troque nuts M10/M12: 20 Nm
- Tightening troque nuts M5/M6: 1.6±0.4 Nm

ELECTRICAL CHARACTERISTICS

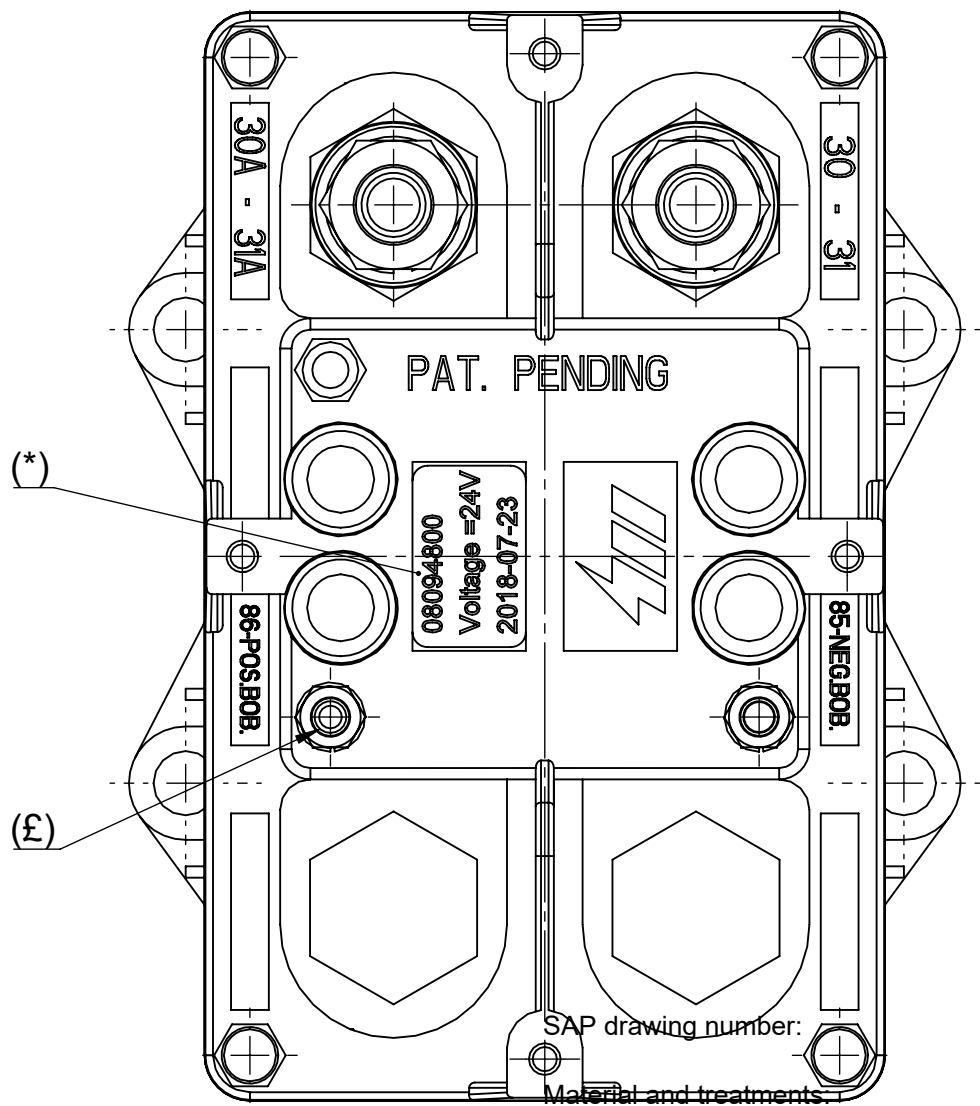
- Nominal voltage range: 12 ÷ 24 V
- Maximum continuos current on main contacts: 250A
- Maximum short time current on main contacts: 2000A at 23°C for 30 sec

PRESCRIPTIONS




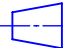

- (*): Manufacturing date according to LITTELFUSE Technical Standard
- (\$): To apply the label indifferently on one box side or the opposite
- (£): Cap for M5 pos. coil pin identification, to remove during TGC installation on vehicle
- It is recommended to fix the TGC to the structure by means of screws M8 UNI 5931:1984 and flat washers 8.4x17 UNI 6592:1969



Electrical diagram



View A

DIMENSIONS AND TOLERANCES IN MILLIMETERS, DEFINED ACCORDING TO ISO 1101:2017.						
linear dimensions						
0,5 3	>3 6	>6 30	>30 120	>120 400	>400 1000	>1000 2000
±0,2	±0,3	±0,5	±0,8	±1,2	±2	±3
angle (for range of lengths)						
up to 10	>10 50	>50 120	>120 400	>400 1000	>1000 2000	>2000 4000
±1°30'	±1°	±0°30'	±0°15'	±0°15'	±0°15'	±0°15'
	FIT/ FUNCTION CRITICAL CHARACTERISTICS SYMBOL					
<S>	SAFETY/ COMPLIANCE CRITICAL CHARACTERISTICS SYMBOL					
CPK	DENOTES CPK DIMENSIONS MINIMUM CPK VALUE					
	DENOTES A CHARACTERISTIC THAT PROVIDES AN INDICATION OF PROCESS PERFORMANCE.PROCEDURE FOR MEASUREMENT AND TRACKING TO BE DEFINED IN LITTELFUSE INSPECTION INSTRUCTIONS					
CP	DENOTES CP DIMENSIONS. -MINIMUM CP VALUE MUST BE WITHIN THE DIMENSIONAL LIMITATIONS SHOWN ON DRAWING AND INITIALLY LOCATED TO ALLOW FOR MAXIMUM TOOL LIFE					
NAME		DATE		 Littelfuse® Expertise Applied Answers Delivered		
DRAWN		L. Dal Molin				
CHECKED		-				
-		-				
FORM NO.: CVP-PE40-0013 REV A				TITLE		
FIRST ANGLE PROJECTION				General Electrical Main Switch TGC/S		
				SIZE: A2 DWG. NO: OL-08094800		OUTLINE REV. A
DO NOT SCALE DRAWING				SCALE 1:1		SHEET 1 OF 1