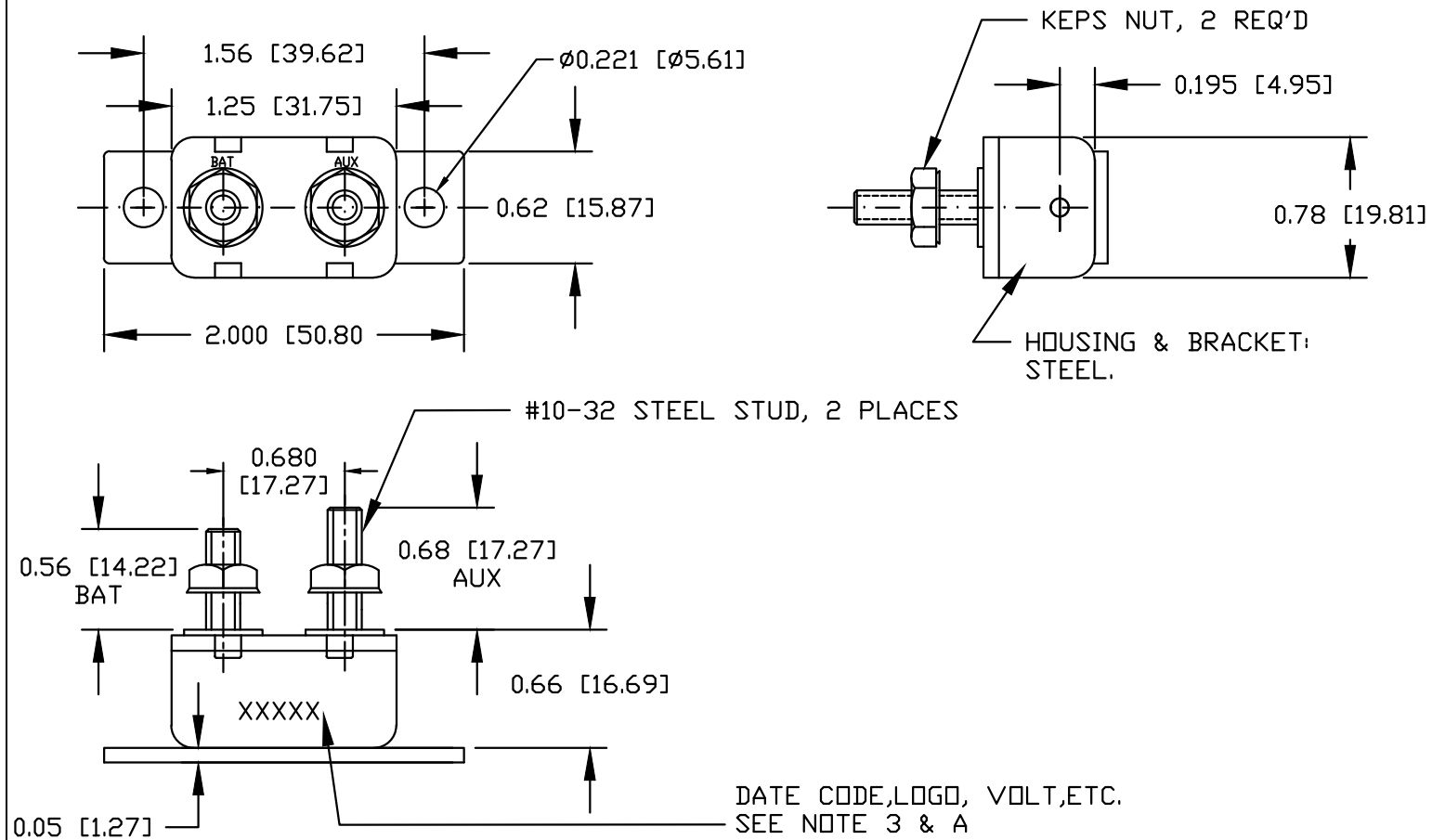


TRADITIONAL CONSTRUCTION

A

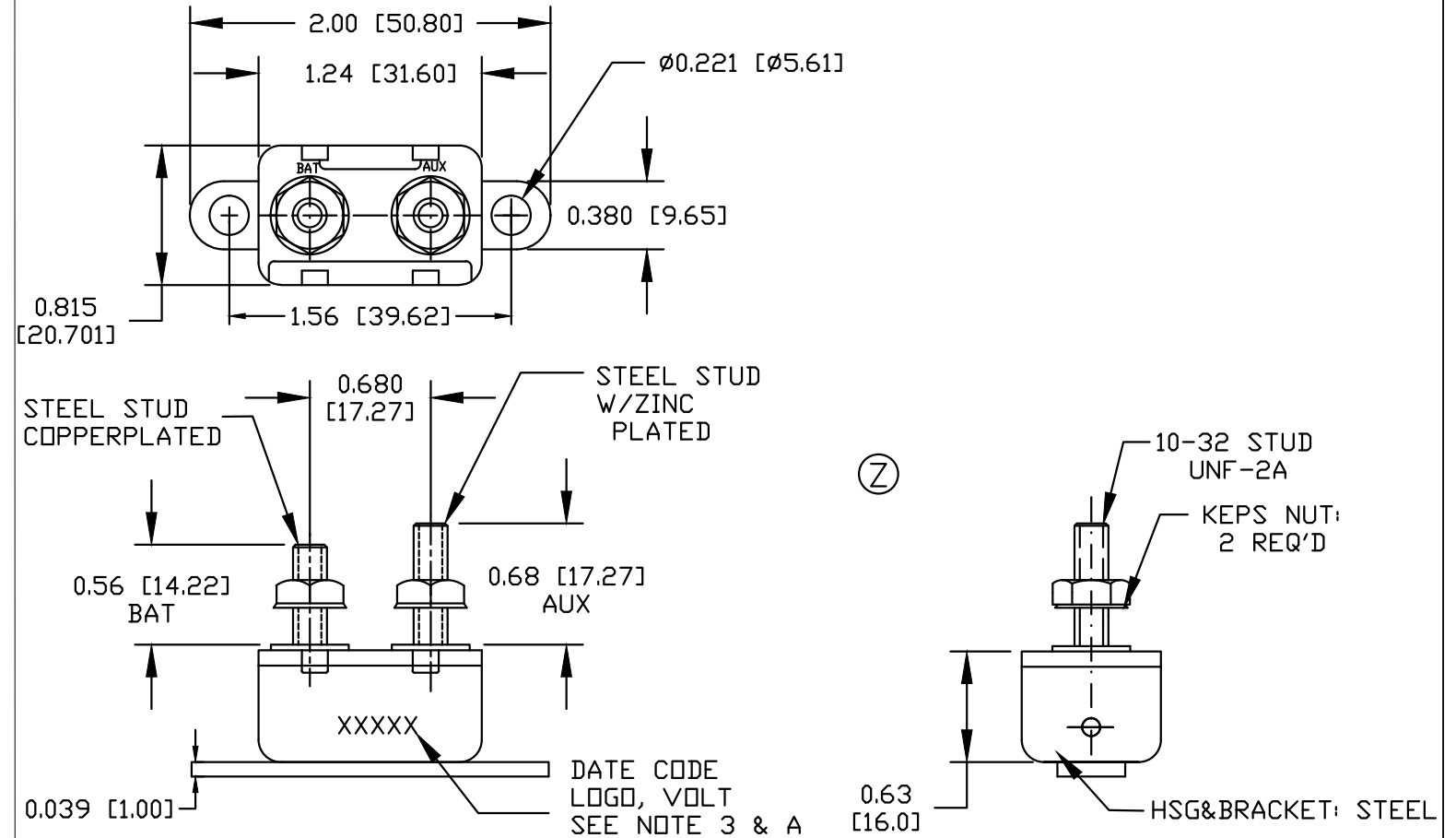
METAL HOUSING WITH STEEL STUDS



ALTERNATE CONSTRUCTION

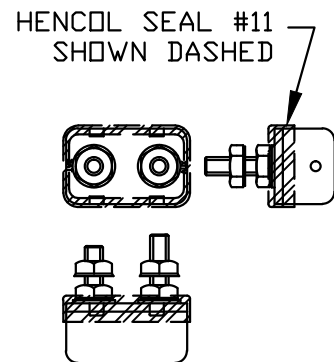
B

METAL HOUSING, COPPER & STEEL STUD



SEALANT

SCALE 1/2:1



TYPE OF CIRCUIT BREAKERS



TYPE 1:
CYCLING CIRCUIT BREAKER

NOTES:

1. ALL STEEL PARTS PLATED
2. ALL DIMENSIONS ARE REFERENCE ONLY
3. LOGO, AMPERAGE, VOLTAGE, TYPE & DATE
CODE STAMPED LEGIBLY ON CASE SIDE.
4. CIRCUIT BREAKER MEETS SAE J553 JUN 88
5. METAL HOUSING IS STEEL W/ZINC YELLOW
DICHROMATE OR CLEAR ZINC.
6. HARDWARE: STEEL, ZINC PLATED
7. COLE HERSEE/LITTELFUSE MAY SUPPLY
EITHER CONSTRUCTION-TYPE A OR TYPE B.

ADDITIONAL NOTES:

A) STAMP COLE HERSEE LOGO & DATE CODE AS TO
WEEK & YEAR OF MANUFACTURE

<u>Revision Control Record</u>				<u>Revision Control Record</u>				<u>Tolerances</u> Unless otherwise specifically noted, the following are default tolerances; * 2-place Decimal Dimensions +/- .02" * 3-place Decimal Dimensions +/- .005" * Angular Dimensions +/- 1.0 Deg. * Metric: Refer to equivalent English Dimension Tolerance >>> NOTE: All tolerances are Non-Cumulative. <<< <u>Dimensional Units</u> All dimensions are expressed in inches except those shown in brackets (xxx) are expressed in millimeters "REF." or an Asterisk (*) = Non-Toleranced Reference Dimension, shown for clarification purposes only.		<u>PROPRIETARY INFORMATION</u> This Engineering Drawing, and the information contained herein, is proprietary to Cole Hersee Company and may not be disclosed, re-produced, or in any other way transferred or communicated to any other party without the express written consent of an authorized representative of Cole Hersee Company. <u>DESIGN CONTROL</u> It is the responsibility of the individual using / referencing this drawing to assure that the noted design revision level agrees with the revision level of the Controlled Document (Master Drawing). This is a NON-CONTROLLED DOCUMENT unless otherwise specifically noted. DO NOT SCALE - Dimensional variation may occur during printing / reproduction.		<u>Key for Special Characteristics:</u> <div><div>CC</div>Critical Characteristic, relating to Safety and/or Regulatory Compliance <div>X</div>Significant Characteristic relating to Process Control (SPC) <div>CD</div>Control Dimension relating to Form - Fit - Function as defined by Cole Hersee Company and/or the Customer (Note that the identification of any Characteristics as being "Special" does not alter the requirement that ALL specified dimensions & tolerances must be met.)</div> <div>Responsible Engineer: N/A</div> <div>Pg. 1 of 2</div>		<div><div></div><div>Cole Hersee Co. 20 Old Colony Ave., South Boston, MA, 02127 Phn: 617-268-2100 Web: www.colehersee.com</div></div> <div>Description: CIRCUIT BREAKER, 12 V</div> <div>Drawing / Part No.: 30138 SERIES</div> <div>Current Rev. Z</div> <div><div></div>CHART</div>	
Rev.	Description of Change	ECN No.	Date	Rev.	Description of Change	ECN No.	Date	Used On or Ref.:	Scale: 2:1	Drawn By: CM	Date Drawn: 08/15/14				
Z	CHANGE NOTE	11058	09/29/14												