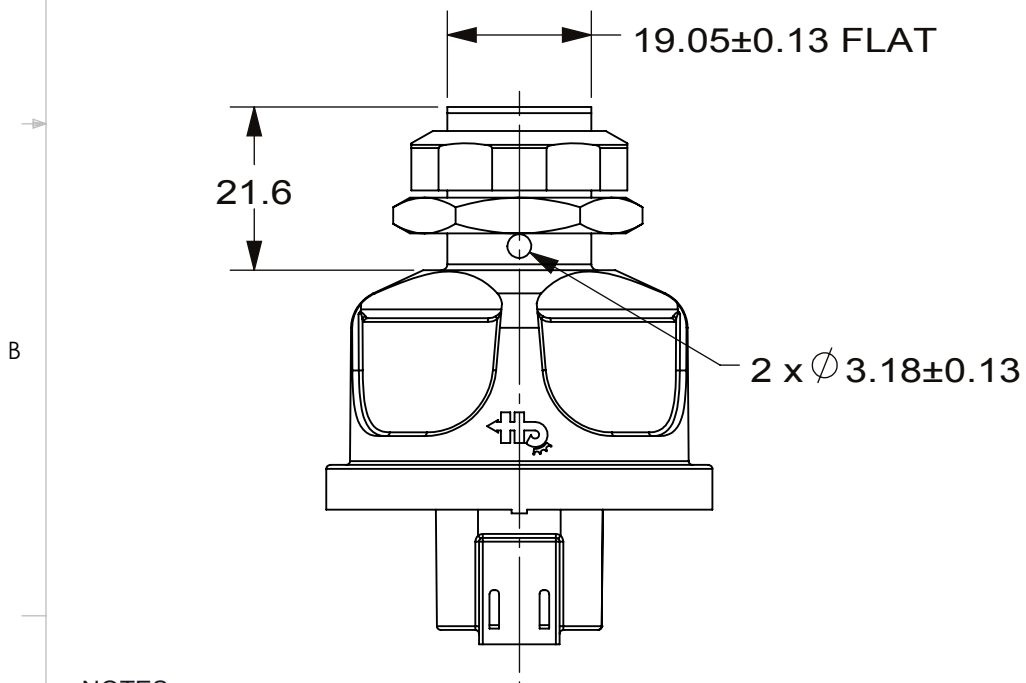
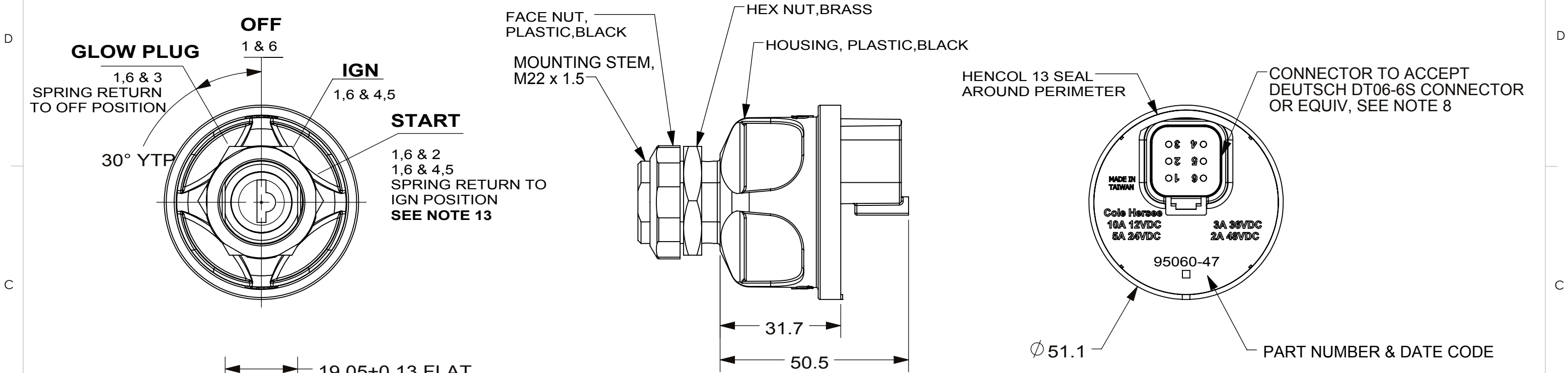


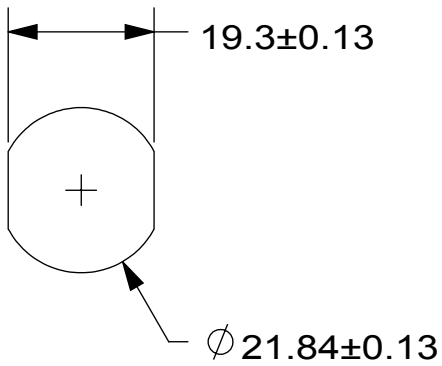
THIS DRAWING AND THE INFORMATION CONTAINED WITHIN IT ARE CONFIDENTIAL AND MAY NOT BE COPIED OR DISCLOSED WITHOUT THE WRITTEN PERMISSION OF LITTELFUSE.

REVISIONS				
ZONE	REV.	DESCRIPTION	DATE	APPROVED
	A	EC #516142-INITIAL RELEASE DRAWING	2016/06/28	JT

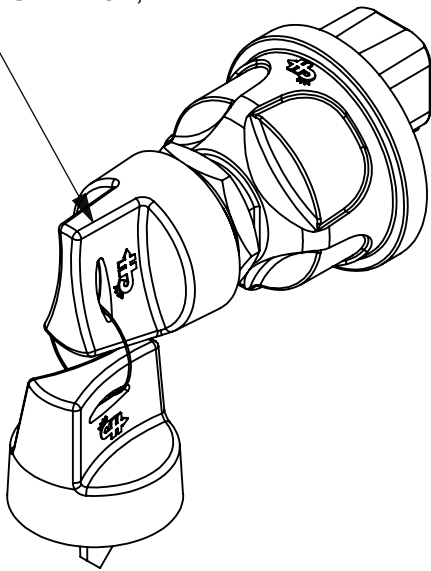


- NOTES:
- 1 PLACE(X.X) TOLERANCES PLUS OR MINUS 0.38mm
 2. CONTACT AREA SEALED TO IP67
 3. BACK OF SWITCH SEALED WHEN MATING CONNECTOR IS INSTALLED
 4. FOR RESISTIVE LOAD RATING SEE CHART OR BACK OF SWITCH
 5. FOR CONNECTOR PIN IDENTIFICATION SEE CHART
 6. MATERIALS: HOUSING BLACK THERMOPLASTIC
INTERNAL CONTACTS COPPER
 7. SWITCH TESTED TO SAE J259
 8. ALSO MATES WITH LITTELFUSE'S 31101 CONNECTOR ASSEMBLY
 9. KEY BOOT FITS OVER FACE NUT
 10. SWITCH SUPPLIED WITH SINGLE KEY CODE 701
 11. SWITCH MUST NOT BREAK CIRCUIT OR BE DAMAGED IF KEY IS TORQUED TO 1.69 Nm [15 IN-LBS]
 12. LIFE 25,000 CYCLES
 13. START LOCKOUT FEATURE: SWITCH MUST GO TO "OFF POSITION" BEFORE THE START CIRCUIT CAN BE RE-ENERGIZED.




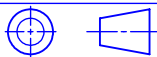
2 DOUBLE BITTED BOOTED KEYS RINGED, BLACK, SINGLE KEY CODE 701, SEE NOTES 9 & 10



PANEL MOUNTING HOLE DIM.



PIN NUMBER	CIRCUIT	12VDC RESISTIVE LOAD
2	START	5 AMPS
3	GLOW PLUG	10 AMPS
4 & 5	IGNITION	10 AMPS
1 & 6	BATTERY	
PIN 1 & 6 CONNECTED TOGETHER INTERNALLY PIN 4 & 5 CONNECTED TOGETHER INTERNALLY		

DIMENSIONS ARE SHOWN IN MILLIMETERS. DIMENSIONS AND TOLERANCES ARE DEFINED ACCORDING TO ANSI/ASME Y14.5-1994.						
	DENOTES PRODUCTS CRITICAL CHARACTERISTICS					
CPK	DENOTES CPK DIMENSIONS MINIMUM CPK VALUE					
	DENOTES A CHARACTERISTIC THAT PROVIDES AN INDICATION OF PROCESS PERFORMANCE.PROCEDURE FOR MEASUREMENTAND TRACKINGTO BE DEFINED IN LITTELFUSE INSPECTION INSTRUCTIONS					
CP	DENOTES CP DIMENSIONS, -MINIMUM CP VALUE MUST BE WITHIN THE DIMENSIONAL LIMITATIONS SHOWN ON DRAWING AND INITIALLY LOCATED TO ALLOW FOR MAXIMUM TOOL LIFE					
TOLERANCES UNLESS OTHERWISE SPECIFIED (REF.ISO2768-M)						
DIMENSION	UP TO 0.5 - 3	OVER UP TO 3 - 6	OVER UP TO 6 - 30	OVER UP TO 30 - 120	OVER UP TO 120 - 400	ANGLE
TOLERANCES	±0.1	±0.1	±0.2	±0.3	±0.5	±1°
NAME DATE			 Exercise Applied Answer's Delivered No.6 Xinghai Street,Suzhou Industry Park,China Phone +86 512 6761 3189 Fax +86 512 6761 1489			
DRAWN	J. LI	2016/06/27				
CHECKED	JT	2016/06/28				
-		-				
-		-				
THIRD ANGLE PROJECTION			TITLE SW, ROT,4POS,PLSTC			
						
DO NOT SCALE DRAWING			SIZE B	DWG. NO. 95060-47		REV. A
SCALE 1:1			SHEET 1 OF 1			