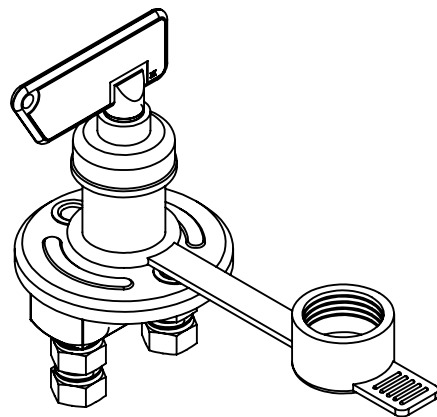
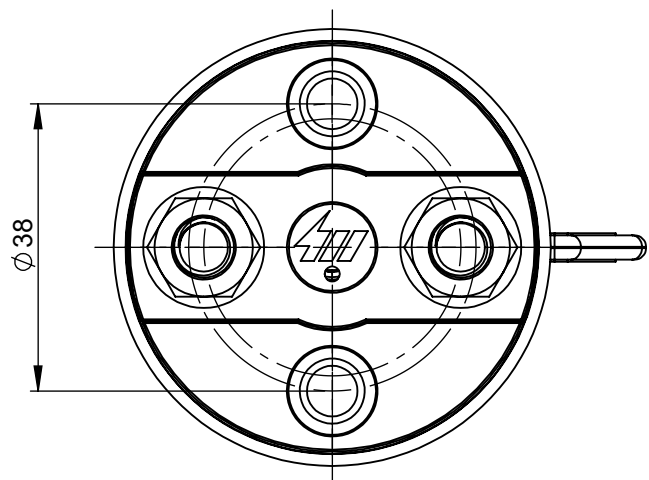
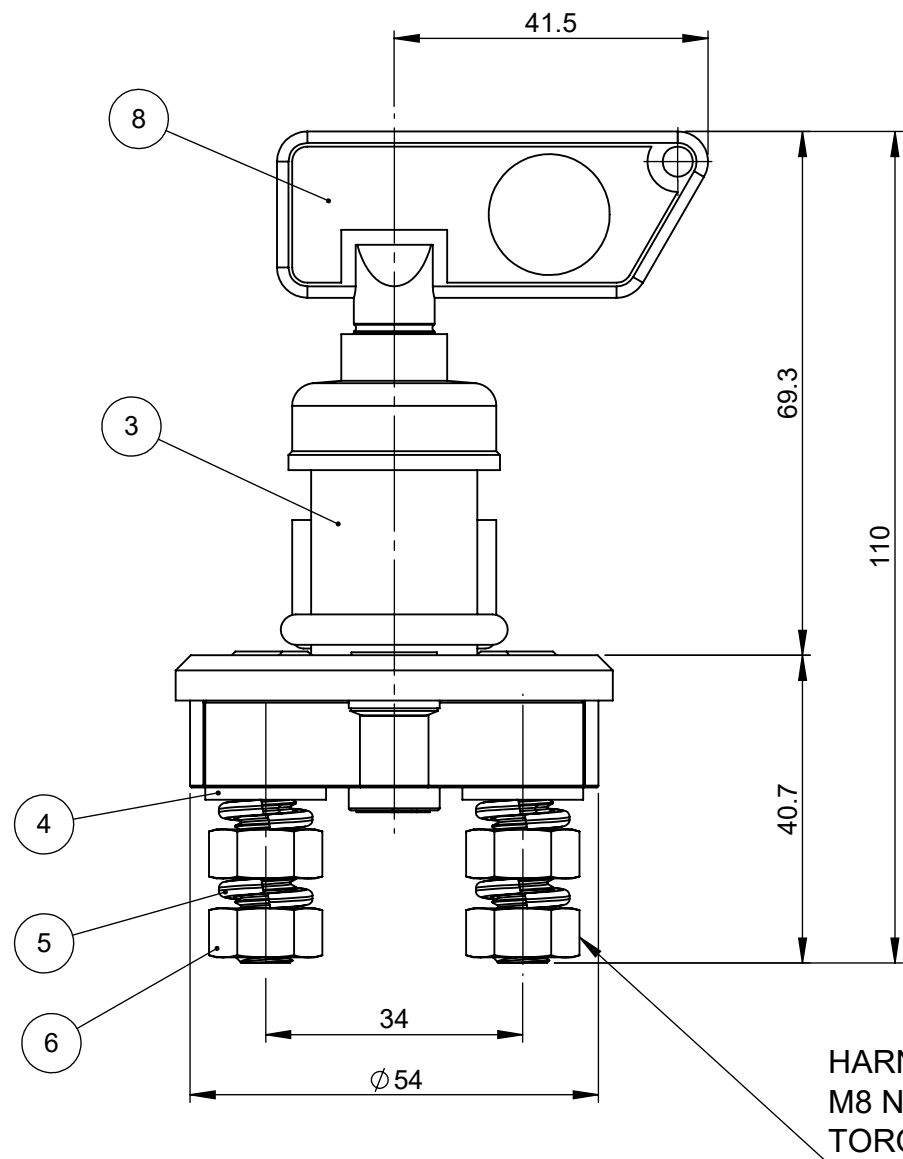


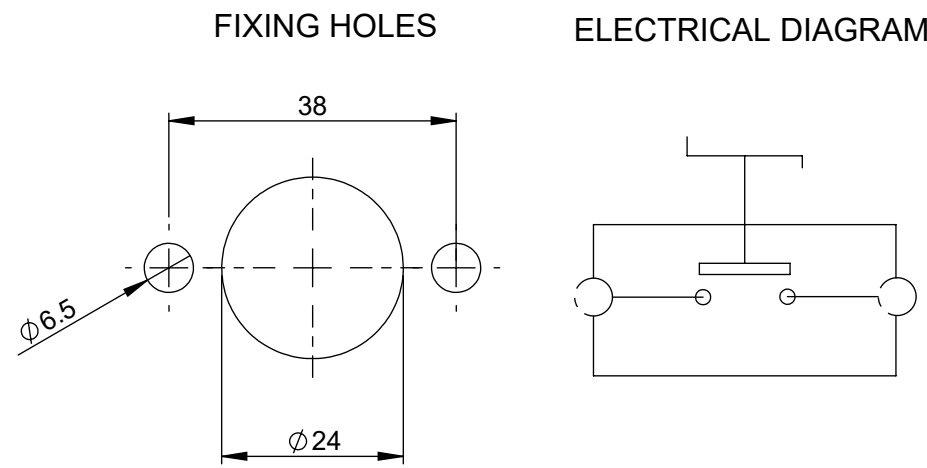
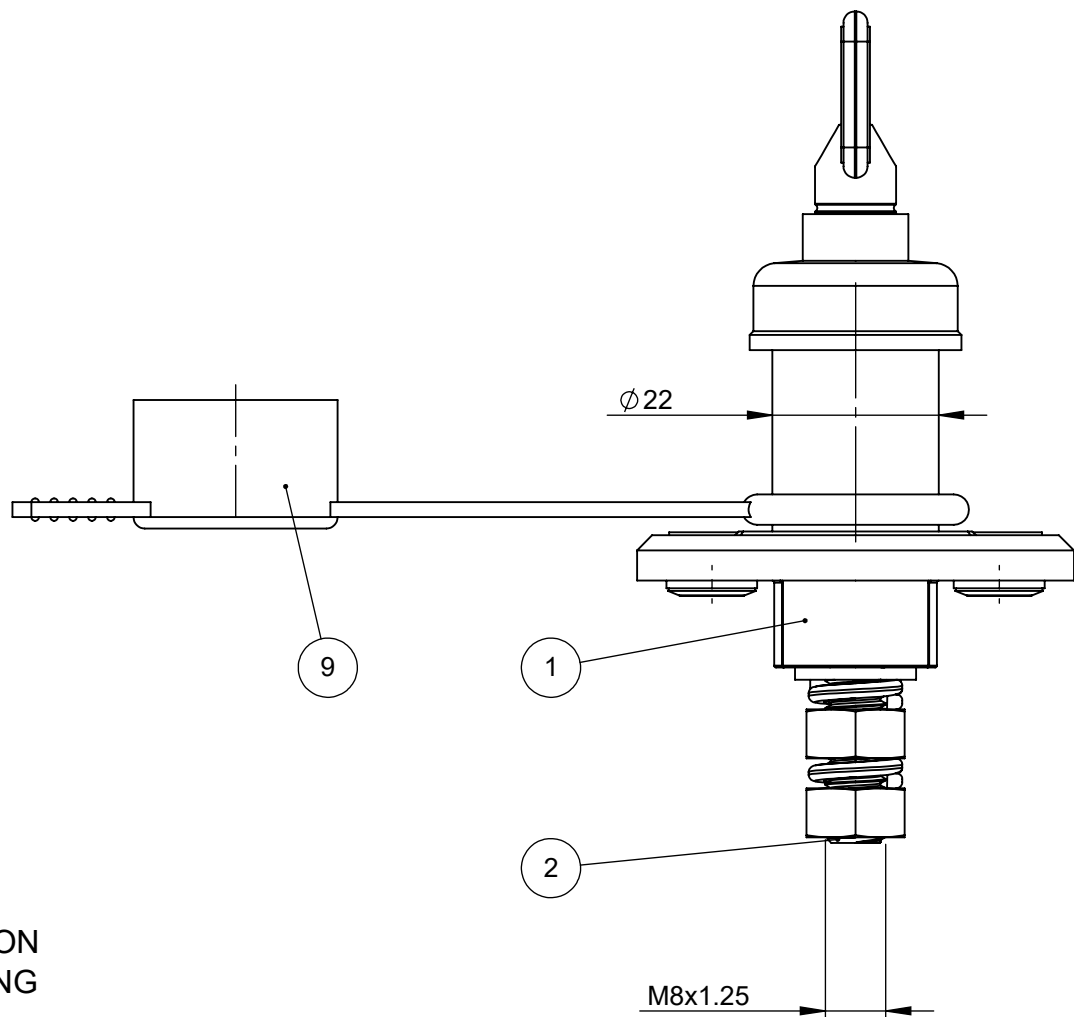
REVISIONS				
REV.	DESCRIPTION	DATE	DESIGNED	APPROVED
A	First issue of outline drawing	29-May-20	L.Dal Molin	M.Tinto



SCALE 1:2



HARNESS RETENTION
M8 NUTS TIGHTENING
TORQUE: 6 Nm MAX



FEATURES

- Nominal voltage: 14V-28V
- Max direct current: 100A
- Max short time current: 500A for 5 seconds at 23±5°C
- Number of electrical operations: 5000
- Number of mechanical operations: 5000
- M8 nuts tightening torque: 6±1 Nm
- Supplying conditions: key, protection casing and cap are disassembled

ASSEMBLY KEY

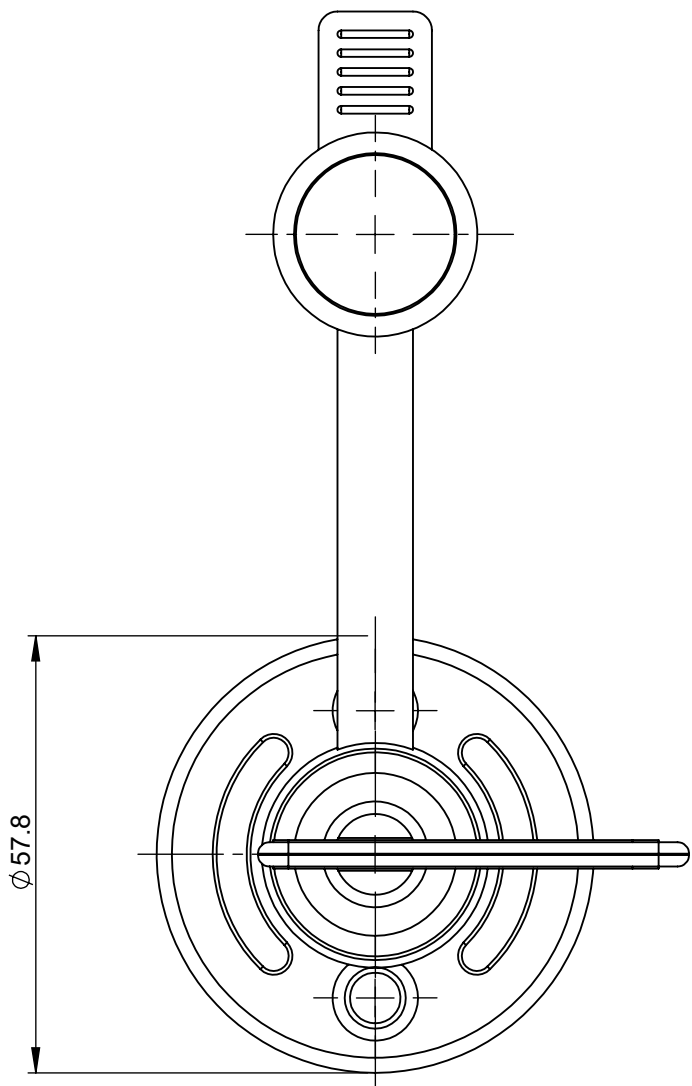
To assemble the key, insert it and turn it clockwise of 50° taking the device in stated Switched OFF; to remove it, with the device in state Switched OFF turn it counterclockwise of 50° and extract it

OPERATION

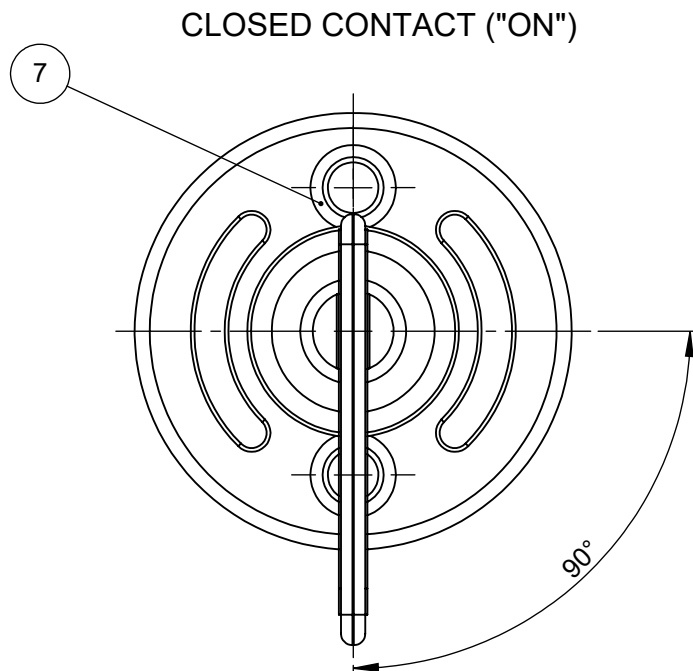
- To close (switch on) the contacts: turn clockwise the key of 90°
- To open (switch off) the contacts: turn counterclockwise the key of 90°

SAP drawing number:

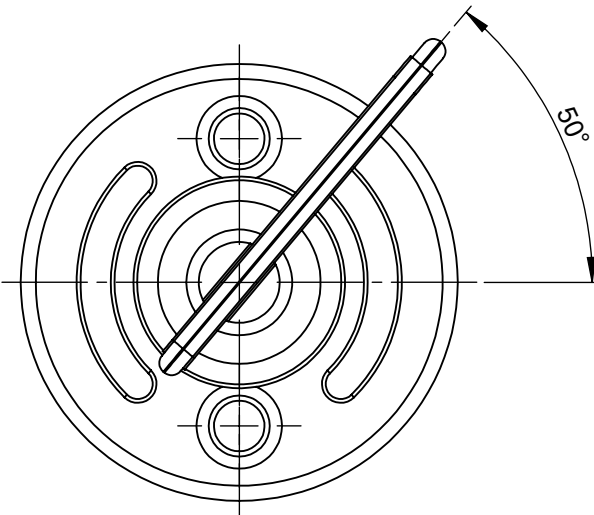
Material and treatments:





OPEN CONTACT ("OFF")



POSITION TO INSERT/REMOVE THE KEY
(VIEW WITHOUT PROTECTION CAP)



9	00603900	Cap for Bms	Thermoplastic	1	EA
8	08099900	Key complete with cap	Polyamide,brass and thermoplastic	1	EA
7		Eyelet	Iron	2	EA
6		Nut M8	Steel	4	EA
5		Spring washer To 8	Steel	4	EA
4		Washer Te 8.4x16	Steel	2	EA
3		Upper body cam double	Polyamide	1	EA
2		Power stud	Copper	2	EA
1		Lower body cont.-holder hole	Polyamide	1	EA
POS.	P/N	DESCRIPTION	MATERIAL	Q.TY	U/M

DIMENSIONS AND TOLERANCES IN MILLIMETERS, DEFINED ACCORDING TO ISO 1101-2017.								
linear dimensions								
0,5 3	>3 6	>6 30	>30 120	>120 400	>400 1000	>1000 2000		
±0,2	±0,3	±0,5	±0,8	±1,2	±2	±3		
angle (for range of lengths)								
up to 10	>10 50	>50 120	>120 400	>400 1000	>1000 2000	>2000 4000		
±1°30'	±1°	±0°30'	±0°15'	±0°15'	±0°15'	±0°15'		
●	FIT/ FUNCTION CRITICAL CHARACTERISTICS SYMBOL							
<S>	SAFETY/ COMPLIANCE CRITICAL CHARACTERISTICS SYMBOL							
CPK	DENOTES CPK DIMENSIONS MINIMUM CPK VALUE							
ST	DENOTES A CHARACTERISTIC THAT PROVIDES AN INDICATION OF PROCESS PERFORMANCE.PROCEDURE FOR MEASUREMENTAND TRACKINGTO BE DEFINED IN LITTELFUSE INSPECTION INSTRUCTIONS							
CP	DENOTES CP DIMENSIONS. -MINIMUM CP VALUE MUST BE WITHIN THE DIMENSIONAL LIMITATIONS SHOWN ON DRAWING AND INITIALLY LOCATED TO ALLOW FOR MAXIMUM TOOL LIFE							
NAME		DATE		<div> Littelfuse®</div> <div>Expertise Applied Answers Delivered</div>				
DRAWN		L. Dal Molin					09-Apr-19	
CHECKED		-					-	
-		-					-	
-		-					-	
FORM NO. CVP-PE40-0013 REV A				TITLE BATTERY MAIN SWITCH IGC				
FIRST ANGLE PROJECTION								
				SIZE: A2 DWG. NO. OL-08099000 OUTLINE REV. A				
DO NOT SCALE DRAWING				SCALE 1:1		SHEET 1 OF 1		