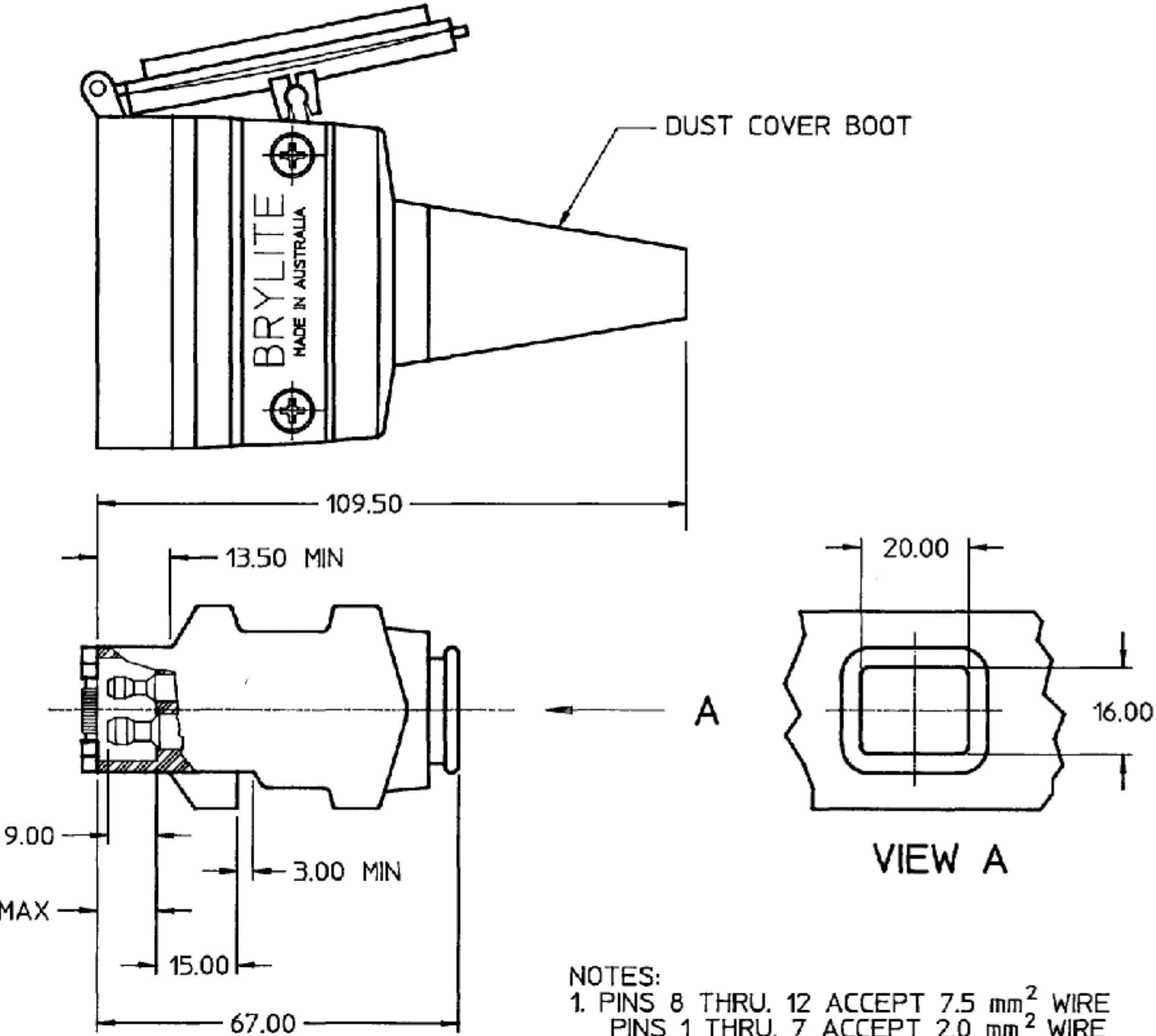
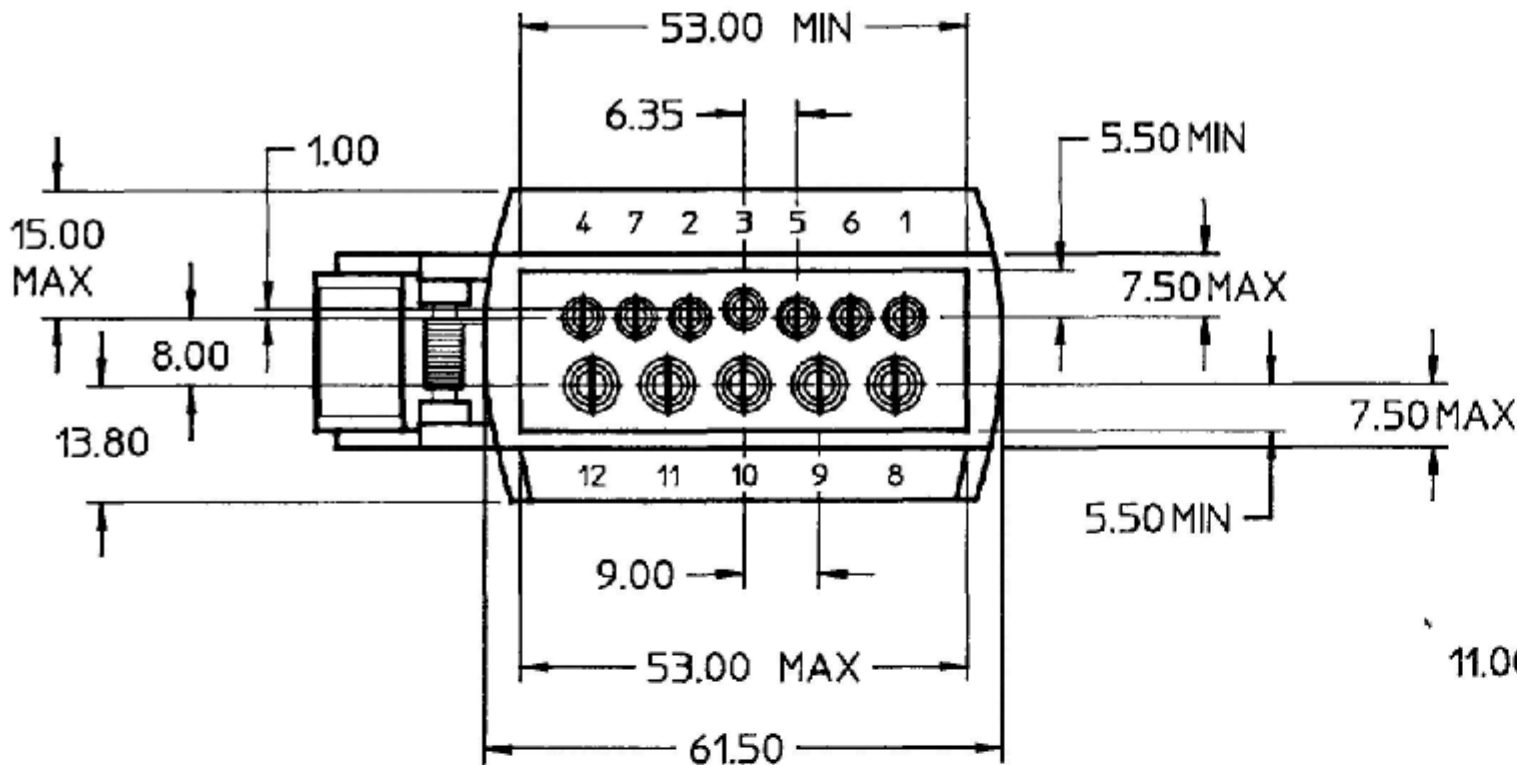



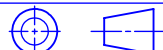


REVISIONS				
ZONE	REV.	DESCRIPTION	DATE	APPROVED
	A	PER EC #520040 ADD NOTE 3; ADD TO LF TEMPLATE	10/19/2018	C. MILLER

MM	IN
1.00	0.039
3.00	0.118
5.50	0.216
6.35	0.250
7.50	0.295
8.00	0.315
9.00	0.354
11.00	0.433
13.50	0.531
13.80	0.543
15.00	0.590
16.00	0.630
20.00	0.787
53.00	2.086
61.50	2.421
67.00	2.630
109.50	4.300
2.0 mm <sup>2</sup>	14 GA
7.5 mm <sup>2</sup>	8 GA



- NOTES:
- PINS 8 THRU. 12 ACCEPT 7.5 mm<sup>2</sup> WIRE  
PINS 1 THRU. 7 ACCEPT 2.0 mm<sup>2</sup> WIRE
  - ALL DIMENSIONS ARE REFERENCE ONLY
  - TORQUE SETTING: 0.4Nm (+/- 0.1Nm)

DIMENSIONS ARE SHOWN IN MILLIMETERS. DIMENSIONS AND TOLERANCES ARE DEFINED ACCORDING TO ANSI/ASME Y14.5-1994.			
	FIT FUNCTION CRITICAL CHARACTERISTICS SYMBOL		
<S>	SAFETY/ COMPLIANCE CRITICAL CHARACTERISTICS SYMBOL		
CPK	DENOTES CPK DIMENSIONS MINIMUM CPK VALUE		
	DENOTES A CHARACTERISTIC THAT PROVIDES AN INDICATION OF PROCESS PERFORMANCE PROCEDURE FOR MEASUREMENT AND TRACKING TO BE DEFINED IN LITTELFUSE INSPECTION INSTRUCTIONS		
CP	DENOTES CP DIMENSIONS. MINIMUM CP VALUE MUST BE WITHIN THE DIMENSIONAL LIMITATIONS SHOWN ON DRAWING AND INITIALLY LOCATED TO ALLOW FOR MAXIMUM TOOL LIFE		
DIMENSION: MM TOLERANCES UNLESS OTHERWISE SPECIFIED ONE PLACE DECIMAL ± 0.5      THREE PLACES DECIMAL ± 0.100 TWO PLACES DECIMAL ± 0.20      ANGULAR ± 2°			
DRAWN	NAME C.MILLER	DATE 10/19/18	 <b>Expertise Applied   Answers Delivered</b>
CHECKED	E. Fernandez	-	
	-	-	
	-	-	
FORM NO: CVP-PE40-0006 REV A THIRD ANGLE PROJECTION			TITLE 12P TRLR CONN (FLAT FLUG)
	SIZE C	DWG. NO. 12501	REV. A
DO NOT SCALE DRAWING		SCALE 1:2	SHEET 1 OF 1