

BMZ SERIES BATTERY MOUNT ZCASE FUSE HOLDER

275A • 32V DC • 2-way or 3-way • ZCASE®



3-Way



Individual Components



2-Way



With Cover

Description

The BMZ fuse holder allows you to mount fusing directly to a post style battery without any special hardware. The isolated bolts eliminate the traditional need for nylon nuts and fuses can be assembled using standard M8 threaded hardware.

Features and Benefits

- Mounts directly to a post style of battery
- Available in 2 or 3 outputs
- Uses ZCASE single Fuses (M8) available 40-600A
- Maximum continuous throughput 275A
- Unlike other battery mount holders the BMZ series does not require a special nut due to isolated bus bar studs and can be installed using standard M8 nuts (sold separately)
- Fusing directly at the battery allows location of larger power distribution boxes outside of the engine compartment while assuring protection of the supply cables

Specifications Overview

Max Voltage Rating:	32V
Max Continuous Current:	275A
Available Fuse Rating:	40- 600A
Fuse Terminal Torque:	14 ± 2 Nm
Battery Terminal Torque:	5.4 ± 0.9 Nm @ 540 RPM
Number of Studs	3
Operating Temp:	-40° to 125° C

Applications

- Truck Upfitter
- Medium Duty Vehicles
- Replacement of multiple in-line holders
- Starter Fusing

Recommended Fuse

- ZCASE®

Web Resources

Download 2D print and technical resources at:
littelfuse.com/bmz

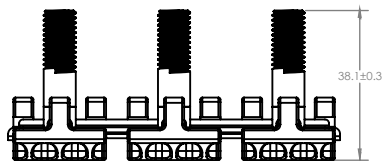
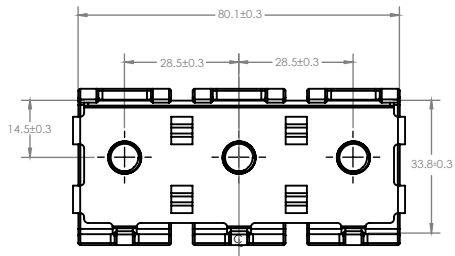
Ordering Information

PART NUMBERS		POSITIONS	DESCRIPTION
BULK	BOXED KIT		
–	0FHZ00854-BX	2	Kit: 882-854 (2 way bus bar), 876-199 (terminal mount), 901-325 (red cover), 1X M8 Bolt, 3x M8 Nuts
–	0FHZ00853-BX	3	Kit: 882-853 (3 way bus bar), 876-199 (terminal mount), 901-325 (red cover), 3x M8 Nuts
882-854	–	2	2 Way Bus Bar & Stud Assembly
882-853	–	3	3 Way Bus Bar & Stud Assembly
876-199	–	–	Battery Terminal
901-325	–	–	Red Rubber 2 or 3 Way Cover

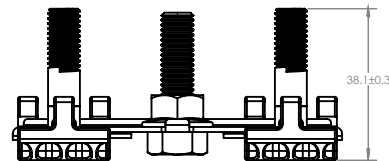
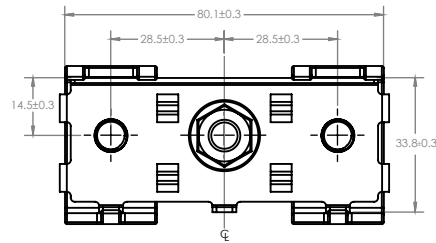
BMZ SERIES BATTERY MOUNT ZCASE FUSE HOLDER

Dimensions in millimeters

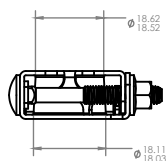
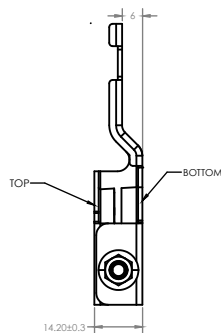
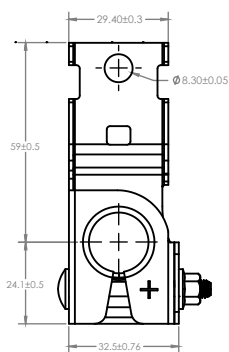
3-way bus bar



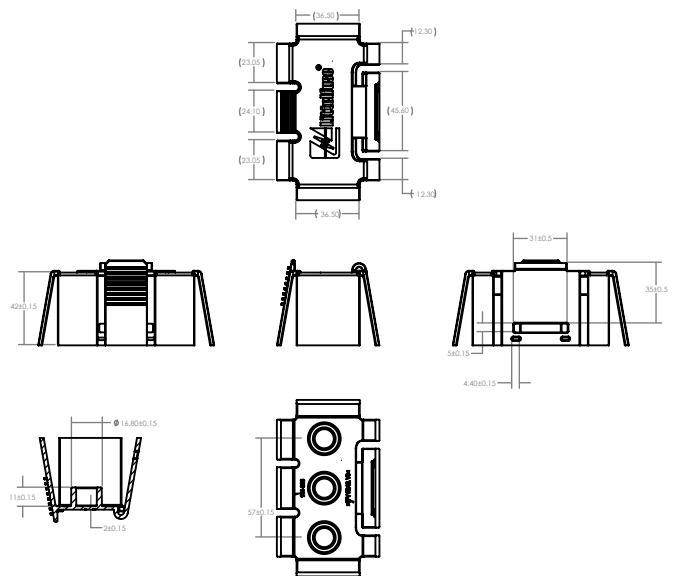
2-way bus bar



Battery Terminal



Cover



Visit Littelfuse.com for the most up-to-date product information. Littelfuse reserves the right to make product changes, without notice. Material in this document is as accurate as known at the time of publication.