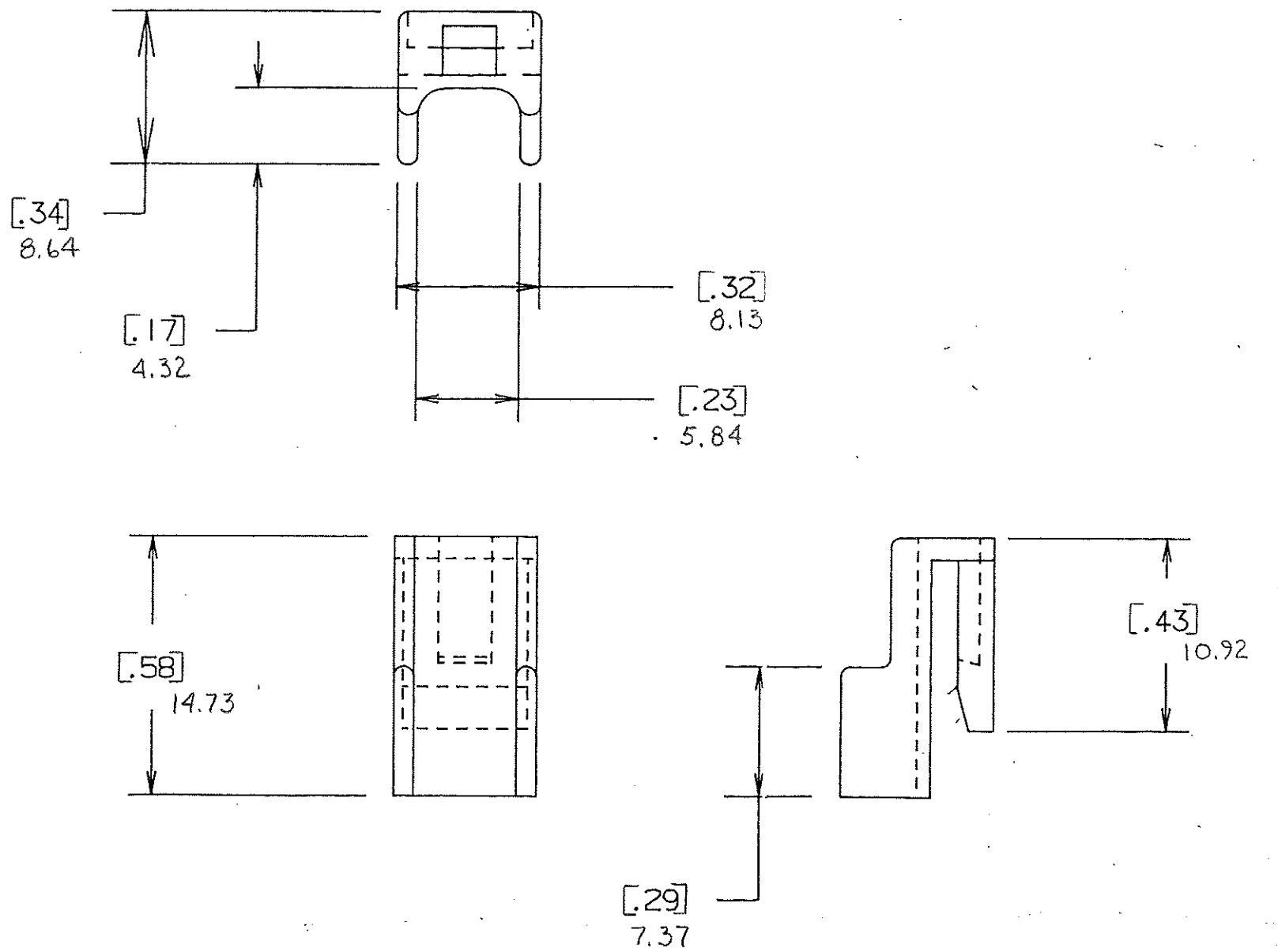


DRAWING NO.



NOTE: ALL DIMENSION ARE IN MILLIMETERS, ENGLISH DIMENSIONS IN [].

CERTIFICATION OF COUNTRY OF ORIGIN REQUIRED

COPIES TO	18	MAT'L. SPEC.	Nylon Color: Green	SCALE	SUPER. DR.	RAW STK. WT.	LBS./M
	9						
2	10	FINISH					
3	12	DR.	GES. Oct. 7 94	CHK.	LS		
4	13	APPD.	A. Husley	DATE	10-11-94		
5	14	TOLERANCE UNLESS OTHERWISE SPECIFIED					
6	15	TWO PLACE DEC. ± .50mm [.020] FRACTION ±					
7	16	THREE PLACE DEC. ± .25mm [.010] ANGULAR ±					
8	17	TITLE					
18	18	TERMINAL LOCKS					

LTR	REVISION	CHK.	APD.
A	06534 - RELEASED OCTOBER 10, 94 GES.	LS	AA
B	36988C - ADD METRIC DIM'S 7-19-95 RFR	LS	LS
C	37085D - CHANGE TITLE 8-19-95 JCU	TBB	LS
D	37150D - CHANGE TITLE 11/2/95 LS	LS	LS
E	000807ER - RE-INSTATE 10/09/09 J.U.		

DRWG. NO. E-03540528Z
Littelfuse
800 E. NORTHWEST HIGHWAY
DES PLAINES, ILLINOIS 60016