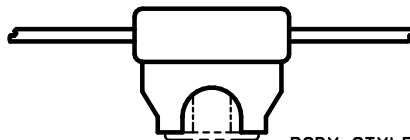
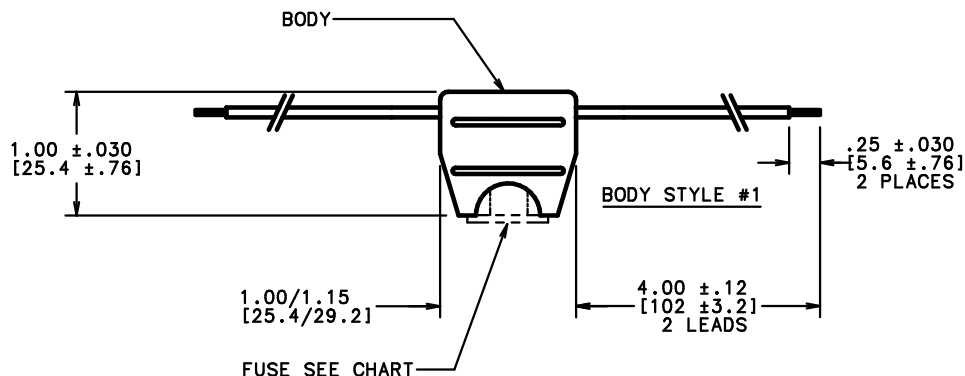


PART No.	BODY	BODY STYLE	FUSE PROVIDED	FUSE RATING	REMARKS
OFHA0001Z	OFHA0001Z	1	NONE	-----	NOTE 1
OFHA0002Z	OFHA0002Z	2	NONE	-----	NOTE 2
OFHA0003Z	OFHA0001Z	1	0257003.P	3 AMP	NOTE 1
OFHA0004Z	OFHA0001Z	1	0257004.P	4 AMP	NOTE 1
OFHA0005Z	OFHA0001Z	1	0257005.P	5 AMP	NOTE 1
OFHA0075Z	OFHA0001Z	1	025707.5P	7.5 AMP	NOTE 1
OFHA0010Z	OFHA0001Z	1	0257010.P	10 AMP	NOTE 1
OFHA0015Z	OFHA0001Z	1	0257015.P	15 AMP	NOTE 1
OFHA0020Z	OFHA0001Z	1	0257020.P	20 AMP	NOTE 1
OFHA0025Z	OFHA0002Z	2	0257025.P	25 AMP	NOTE 2
OFHA0030Z	OFHA0002Z	2	0257030.P	30 AMP	NOTE 2



BODY STYLE #2



NOTES:

- FOR OFHA0001Z:
  - MAX. RATING: 20 AMPS, 32 VOLTS AT A MAX. OPERATING TEMPERATURE OF 180° F (82° C).
  - BODY MATERIAL: HIGH TEMPERATURE P.V.C., BLACK.
  - BLACK WIRE LEADS, #16 GAUGE, COPPER STRANDED (19 STRAND/29 GAUGE) PVC INSULATION, 0.016" THICK [0.406mm] AUTOMOTIVE LOW TENSION TYPE GPT/TW PER S.A.E. STRANDED J1128.
- FOR OFHA0002Z:
  - MAX. RATING: 30 AMPS, 32 VOLTS AT A MAX. OPERATING TEMPERATURE OF 180° F (82° C).
  - BODY MATERIAL: HIGH TEMPERATURE POLYURETHANE, BLACK.
  - ORANGE WIRE LEADS, #12 GAUGE, NOM. O.D. 0.136" [3.5mm], COPPER STRANDED (19 STRAND/25 GAUGE) PVC INSULATION, 0.026" THICK [0.660mm], RATED 300V, TEMP. RANGE: -10°C TO +80°C.

GENERAL NOTES:

- WIRE LEADS ARE MOLDED INTO FUSEHOLDER BODY.
- DIMENSIONS IN INCHES, [mm].

NO	COMPONENT NO	DESCRIPTION	QTY/M	U/M
<b>BILL OF MATERIAL</b>				
MATL SPEC		FINISH		
COPIES TO	DRW	JMB	SCALE	1=1
1	9		DATE	2/10/99
2	10		DATE	
3	12		DATE	
4	13		DATE	
5	14		DATE	
6	15		DATE	
7	16		DATE	
8	17		DATE	
TOLERANCE UNLESS OTHERWISE SPECIFIED				
TWO PLACE DEC ±.01				
THREE PLACE DEC ±.005				
ANGULAR ±1°				
TITLE				
AUTOFUSE HOLDER, INLINE (FUSE OPTIONAL)				
DRAWING NO. SERIES OUTLINE				
OFHA0000Z				
E				
DES PLAINES, ILLINOIS 60016				
LTR				
REVISION				
CHK APD				
F 39728C- REVISED & REDRAWN ON NEW FORMAT 2/26/99 JMB				

UNLESS OTHERWISE SPECIFIED, DIMENSIONS DO NOT INCLUDE PLATING.

ST DENOTES CRITICAL CHARACTERISTICS.

CPK DENOTES CPK DIMENSIONS, -MINIMUM CPK VALUE

CPK DENOTES A CHARACTERISTIC THAT PROVIDES AN INDICATION OF PROCESS PERFORMANCE. THE PROCEDURE FOR MEASUREMENT OF CPK IS IN THE INSTRUCTION BOOKLET. INSPECTOR'S SIGNATURE AND DATE MUST BE WITHIN THE DIMENSIONAL LIMITATIONS FOR MAXIMUM TOOL LIFE.

**UNCONTROLLED DOCUMENT**