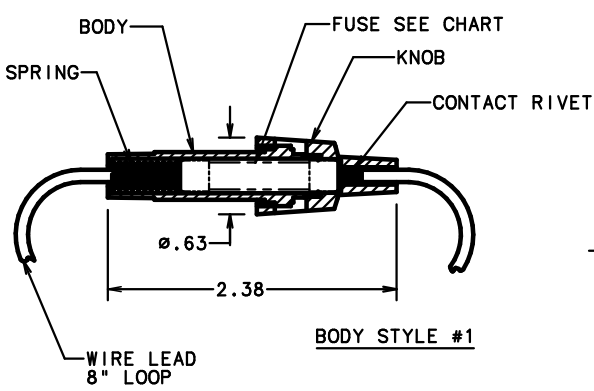
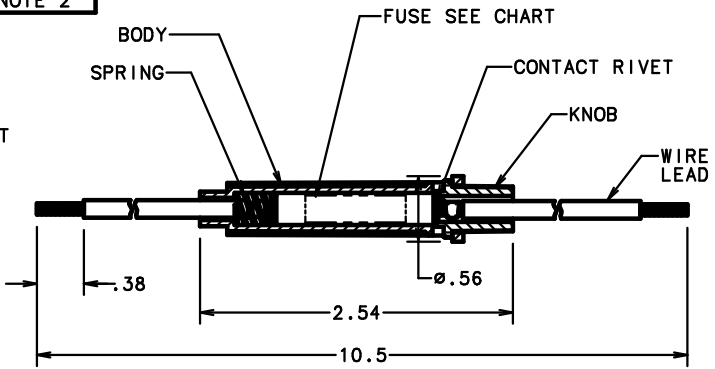


PART No.	BODY	BODY STYLE	FUSE PROVIDED	FUSE RATING	REMARKS
OFNY0001Z	OFNY0001Z	1	NONE	----	NOTE 1
OFNY0004Z	OFNY0001Z	1	0307004.Z	4 AMP	NOTE 1
OFNY0006Z	OFNY0001Z	1	0307006.Z	6 AMP	NOTE 1
OFNY00075Z	OFNY0001Z	1	0307007.5Z	7.5 AMP	NOTE 1
OFNY0009Z	OFNY0001Z	1	0307009.Z	9 AMP	NOTE 1
OFNY0014Z	OFNY0001Z	1	0307014.Z	14 AMP	NOTE 1
OFNY0020Z	OFNY0001Z	1	0307020.Z	20 AMP	NOTE 1
OFNY0030Z	OFNY0030Z	2	0307030.Z	30 AMP	NOTE 2



BODY STYLE #1



BODY STYLE #2

- NOTES:
- FOR OFNY0001:
 - MAX. RATING: 20 AMPS, 32 VOLTS AT A MAXIMUM OPERATING TEMPERATURE OF 180° F (82° C).
 - BODY MATERIAL: NYLON 6/6, BLACK
KNOB MATERIAL: NYLON 6/6, BLACK
SPRING MATERIAL: COATED STEEL
CONTACT RIVET MATERIAL: BRASS
WIRE LEAD MATERIAL: #14 GAUGE, STRANDED, BLACK
FUSEHOLDER IS SHIPPED WITH KNOB AND BODY ASSEMBLED (FUSE INSTALLED, IF REQUIRED) FORMING A LOOP.
 - FOR OFNY0030:
 - MAX. RATING: 30 AMPS, 32 VOLTS AT A MAXIMUM OPERATING TEMPERATURE OF 180° F (82° C).
 - BODY MATERIAL: NYLON, WHITE TRANSLUCENT
KNOB MATERIAL: NYLON 6/6, BLACK
SPRING MATERIAL: COATED STEEL
CONTACT RIVET MATERIAL: BRASS
WIRE LEAD MATERIAL: #12 GAUGE, STRANDED, ORANGE PVC, G.P. SAE TYPE 1
FUSEHOLDER IS SHIPPED WITH KNOB AND BODY ASSEMBLED (FUSE INSTALLED).

GENERAL NOTES:
1. TOTAL WEIGHT OF SHIPPING CARTON SHALL BE LIMITED TO 50 LBS. MAX.

NO	COMPONENT NO	DESCRIPTION	QTY/M	U/M
BILL OF MATERIAL				
MATERIAL SPEC		FINISH		
COPIES TO	DRW	DATE	SCALE	1=1
1	9	18	JMB	
2	10	19	CHK	
3	12	20	DATE	SUPER DRW
4	13	21	APPD	RAW STK WT
5	14	23		LBS/M
6	15	33		
7	16	43		
8	17	53		
TOLERANCE UNLESS OTHERWISE SPECIFIED TWO PLACE DEC ±.01 THREE PLACE DEC ±.005 ANGULAR ±1°				
FUSEHOLDER, IN LINE (FUSE OPTIONAL)				
LTR		REVISION		CHK
F	39728C-	REVISE & REDRAWN ON NEW FORMAT	2/26/99	JMB
G	82904C - OBS.	OFNY0075Z, OFNY0009Z		
-	3/21/03			BJJ

DES PLAINES, ILLINOIS 60016
 G
 SERIES OUTLINE
 OFNY0000Z

UNLESS OTHERWISE SPECIFIED, DIMENSIONS DO NOT INCLUDE PLATING.
 DENOTES CRITICAL CHARACTERISTICS.
 DENOTES CPK DIMENSIONS - MINIMUM CPK VALUE
 DENOTES A CHARACTERISTIC THAT PROVIDES AN INDICATION OF PROCESS PERFORMANCE. REFERENCE PROCEDURE FOR MEASUREMENT OF THIS CHARACTERISTIC IS LOCATED IN THE INSTRUCTIONS.
 DIMENSIONS OF DIMENSIONS - MINIMUM CP VALUE SHALL BE WITHIN THE DIMENSIONAL LIMITATIONS AND TOLERANCES SPECIFIED IN THE INSTRUCTIONS FOR MAXIMUM TOOL LIFE.

UNCONTROLLED DOCUMENT