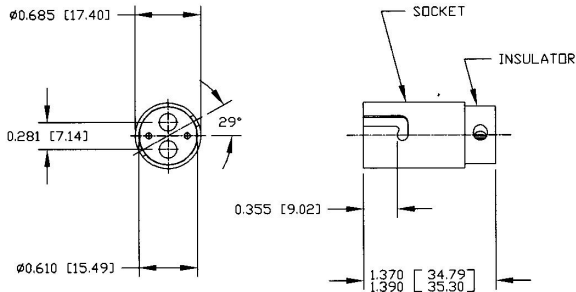


Revision Control Record

Rev.	Description of Change	ECN No.	Date
M	REVISED DRAWING	03716	12/29/03



- NOTES:
1. ALL STEEL PARTS PLATED
 2. ALL DIMENSIONS ARE REFERENCE ONLY UNLESS NOTED OTHERWISE
 3. SOCKET ACCEPTS BA15d BASE BULB (DOUBLE CONTACT BAYONET BASE)

Tolerances. Unless otherwise specifically noted, the following are default tolerances:

- * 2-place Decimal Dimensions $\pm .02$ "
- * 3-place Decimal Dimensions $\pm .005$ "
- * Angular Dimensions ± 1.0 Deg.
- * Metric: Refer to equivalent English Dimension Tolerance
- >>> NOTE: All tolerances are Non-Cumulative. <<<

Dimensional Units. All dimensions are expressed in inches except those shown in brackets (xxx) are expressed in millimeters.

"SPEC." or an Asterisk (*) is Non-Toleranced Reference Dimension, shown for clarificative purposes only.

Used On
or Ref:

Scale: **1:1**

Drawn **RG**
By:

Date **2/13/47**
Drawn:

Responsible
Engineer: **NA**

Pg. **1** of **1**

Special Characteristics

- Critical Characteristic, relating to Safety and/or Regulatory Compliance
- Significant Characteristic relating to Process Control (SPC)
- Key Characteristic relating to Form - Fit - Function as defined by Cole Hersee Company and/or the Customer

(Note that the identification of any Characteristics as being "Special" does not alter the requirement that ALL specified dimensions & tolerances must be met.)

Cole Hersee Co.



20 Old Colony Ave., South Boston, MA, 02127
Phone 617-268-2100 Web: www.colehersee.com

Description:

LAMP SOCKET, DC

Drawing /
Part No.:

2006

Current Rev.

M