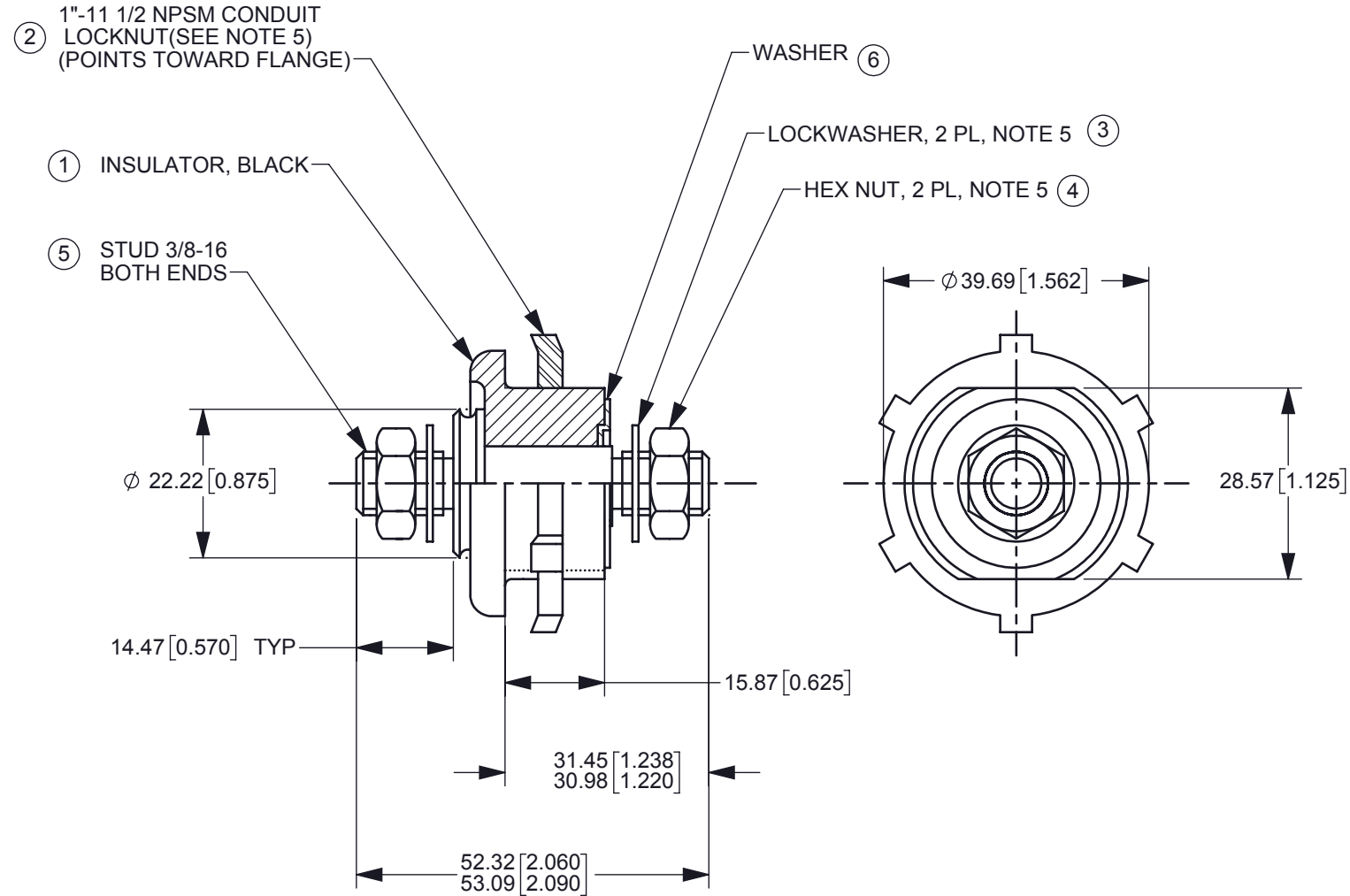


THIS DRAWING AND THE INFORMATION CONTAINED WITHIN IT ARE CONFIDENTIAL AND MAY NOT BE COPIED OR DISCLOSED WITHOUT THE WRITTEN PERMISSION OF LITTELFUSE.

REVISIONS				
ZONE	REV.	DESCRIPTION	DATE	APPROVED
	J	ECO #03189 NOTES	05/30/03	
	K	DIMENSIONS & VIEW	12/23/03	
	L	ECO # 12085 ADDED BLACK	03/16/12	
	M	ECO #521068 UPDATE DIMENSION C.MILLER	07/22/19	E.FERNANDEZ



NOTES:

1. ALL STEEL PARTS PLATED
2. ALL DIMENSIONS ARE REFERENCE ONLY
3. MOUNTING THREADS 1"-11 1/2 NPSM- MOUNTING TORQUE 10.8-13.5 Nm (8-10 FT LBS) NOT TO EXCEED 13.5 Nm (10 FT LBS)
4. STUD 3/8"-16 TIGHTENING TORQUE 8.1-10.8 Nm (6-8 FT LBS)
5. ALL HARDWARE SUPPLIED IN BAG

INTERPRET DRAWING TO ANSI/ASME Y14.5-1994.	
●	FIT/ FUNCTION CRITICAL CHARACTERISTICS SYMBOL
<S>	SAFETY/ COMPLIANCE CRITICAL CHARACTERISTICS SYMBOL
CPK	DENOTES CPK DIMENSIONS MINIMUM CPK VALUE
ST	DENOTES A CHARACTERISTIC THAT PROVIDES AN INDICATION OF PROCESS PERFORMANCE PROCEDURE FOR MEASUREMENT AND TRACKING TO BE DEFINED IN LITTELFUSE INSPECTION INSTRUCTIONS
CP	DENOTES CP DIMENSIONS, -MINIMUM CP VALUE MUST BE WITHIN THE DIMENSIONAL LIMITATIONS SHOWN ON DRAWING AND INITIALLY LOCATED TO ALLOW FOR MAXIMUM TOOL LIFE
DIMENSION: MM TOLERANCES UNLESS OTHERWISE SPECIFIED ONE PLACE DECIMAL $\pm 0.5$ THREE PLACES DECIMAL $\pm 0.100$ TWO PLACES DECIMAL $\pm 0.20$ ANGULAR $\pm 2^\circ$	

6	88706	WASHER	1
5	83084	STUD 3/8"-16	1
4	84000	HEX NUT 3/8"-16	2
3	85049	LOCKWASHER 3/8"	2
2	83320	NUT LOCK 1-11 1/2	1
1	87394	INSULATOR, BLACK	1
ITEM	PART NO.	COMPONENT NAME	QTY

DRAWN	RG	DATE	8/8/80
CHECKED	A.HOANG	DATE	7/25/19
FORM NO: CVP-PE40-0004 REV A		THIRD ANGLE PROJECTION	
DO NOT SCALE DRAWING		SCALE 1:1	SHEET 1 OF 1

**Littelfuse**  
Expertise Applied | Answers Delivered

TITLE: FEED THRU STUD

SIZE: B DWG. NO.: 46211-01 REV. M