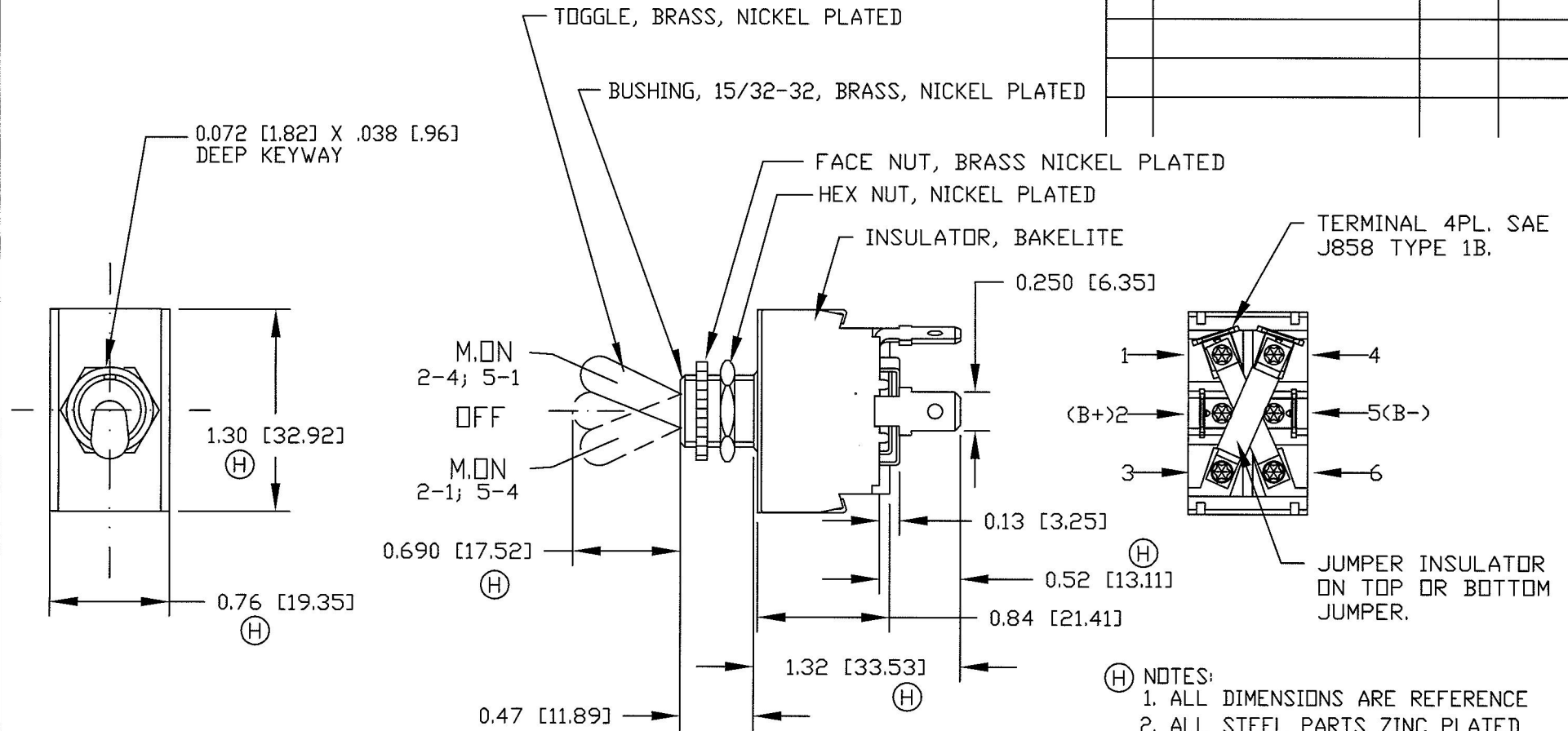


Revision Control Record

Rev.	Description of Change	ECN No.	Date
H	CONVERTED TO CAD	11131	04/21/11



- (H) NOTES:
1. ALL DIMENSIONS ARE REFERENCE
 2. ALL STEEL PARTS ZINC PLATED
 3. SILVER CONTACT SURFACES
 4. SWITCH RATING: 12V/25A; 24V/15A

Tolerances Unless otherwise specifically noted, the following are default tolerances;

2-places +/- 0.02" **3-places** +/- 0.005" **Angular** +/- 1'

Metric: Shown in [] refers to equivalent English Dim Tol

"REF." or an Asterisk (*) = Non-Toleranced Reference Dimension, shown for clarification purposes only.

NOTE: All tolerances are Non-Cumulative.

PROPRIETARY INFORMATION

This Engineering Drawing, and the information contained herein, is proprietary to Cole Hersee Company and may not be disclosed, re-produced, or in any other way transferred or communicated to any other party without the express written consent of an authorized representative of Cole Hersee Company.

Special Characteristics:

- CC Critical Characteristic, relating to Safety and/or Regulatory Compliance
- X Significant Characteristic relating to Process Control
- KC Control Dimension relating to Form - Fit - Function as defined by Cole Hersee Company and/or the Customer



Cole Hersee Co.

20 Old Colony Ave., South Boston, MA, 02127
Phn: 617-268-2100 Web: www.colehersee.com

Description:

(H)

**SWITCH, TOGGLE . DPDT
M.ON-OFF-M.ON; FW-REV**

Drawing / Part No.:

55046

Current Rev.

H