

55054-04

MM IN.  
 .93 .470  
 .95 .750  
 .92 1.32  
 .8-10 1.50  
 .48 1.83  
 .25 .010  
 6.95 .250

COLE-HERSEE CO. NPM 4-26-77

BUSHING-BRASS NICKEL PLT.  
 15/32-32 UN5-2A

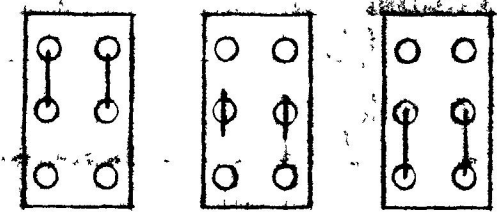
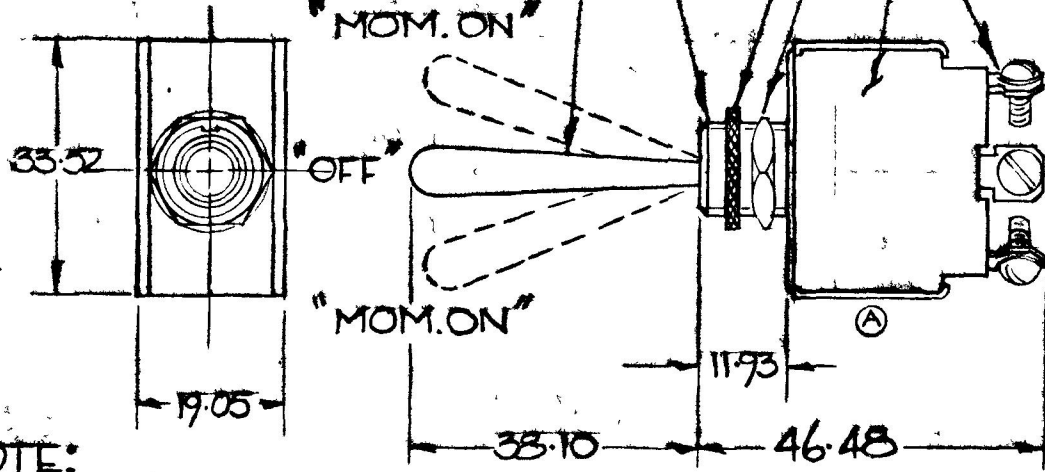
TOGGLE-BRASS  
 NICKEL PLATE

FACE NUT-BRASS-NICKEL PLT.

HEX NUT-STEEL

INSULATOR - MOLDED B'LITE

TERMINAL-BRASS &  
 SCREW-BRASS, 6-32 UNC-2A  
 X 6.35 LG.



MOM. ON OFF MOM. ON  
 CIRCUIT DIAGRAM

NOTE:  
 ALL STEEL PARTS EITHER  
 ZINC PLT W/ DICHROMATE DIP OR  
 CAD. PLT.

25 AMP @ 12 VDC

DO NOT SCALE

LET	WAS	DATE	BY	LET	WAS	DATE	BY	MATERIAL	DRAWN	CHECKED	APPR'D	SCALE	BASIC WITH LONG	DATE DRAWN
								#	C	RY		FULL	TOGGLE & 1/4" SCREWS	2-23-77
								FINISH	<b>COLE-HERSEE COMPANY</b> BOSTON, MASS. 02127, U.S.A.					DATE BLUEPRINT
							#	TOLERANCES						MOMENTARY D.P.D.T. TOGGLE SWITCH.
				A	REVISE	3/14/86	VK	FRACTIONAL ±						
					ISSUED	5-3-77		DECIMAL ±.25						