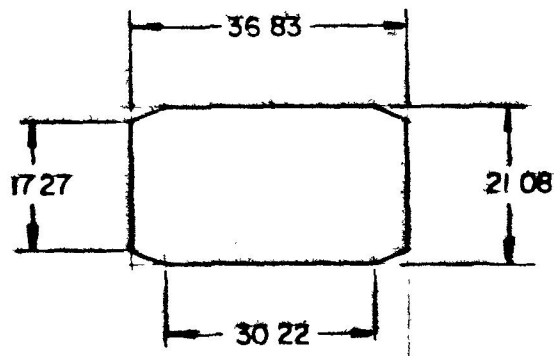


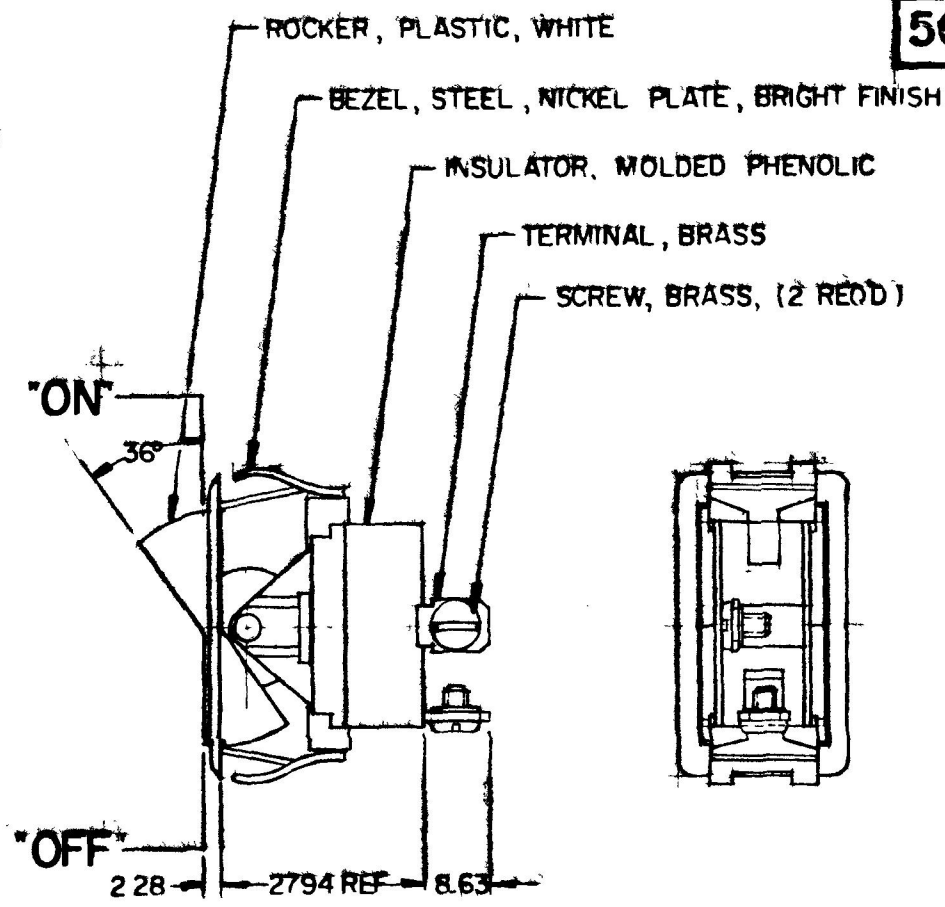
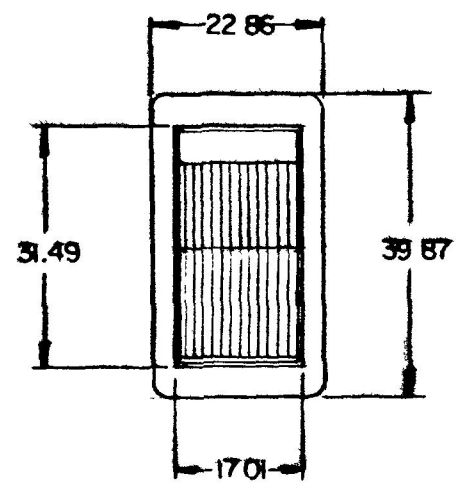
10.25	.010
12.28	.090
13.63	.340
17.01	.670
17.27	.680
21.08	.830
22.86	.900
27.94	1.100
30.22	1.190
36.83	1.450
39.87	1.570
31.49	1.240

COLE-HERSEE CO.

56000-01  
56000-05



**MOUNTING HOLE DETAIL**



**NOTE:**  
SILVER CONTACT RIVETS & SILVER CONTACT PAD

**25 AMPS @ 12V DC LAMP LOAD**

**HEAVY DUTY**

**METRIC**

**56000-05 SAME AS 56000-01  
EXCEPT BEZEL NICKEL PLATE  
DULL FINISH**

**DO NOT SCALE**

LET	WAS	DATE	BY	LET	WAS	DATE	BY	MATERIAL	DRAWN	CHECKED	APPRV'D	SCALE	BASIC EXCEPT WITH BEZEL REPLACING BRACKET	DATE DRAWN
								— # —	MF	4-18-78		FULL		9-15-67
								FINISH	<b>COLE-HERSEE COMPANY</b> BOSTON, MASS 02127, U.S.A.					DATE BLUEPRINT
								TOLERANCES						
								FRACTIONAL ±	<b>SPST ROCKER SWITCH</b>					56000-01
								DECIMAL ±0.25						

SPALDING CO., INC 21-10961