

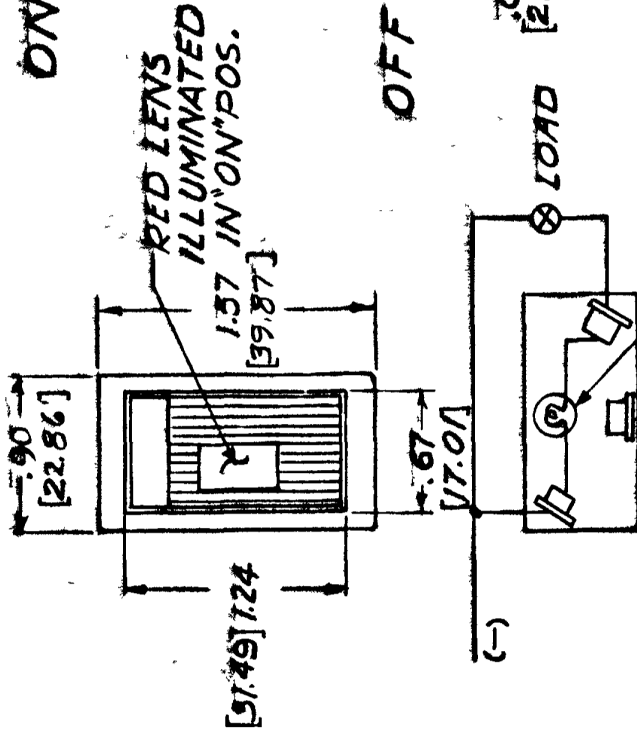
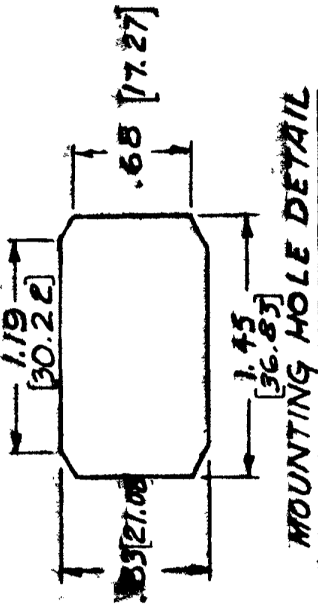
56300-01
56300-05

ROCKER, WHITE

BEZEL, STEEL, NICKEL PLT, BRIGHT FINISH

INSULATOR, MOLDED PHENOLIC
TERMINAL, BRASS

SCREW, BRASS # 0-32 THD.
(3 PLACES)



NOTE

SILVER CONTACT RIVETS AND
SILVER CONTACT PAD

HEAVY DUTY

56300-05 SAME AS 56300-01
EXCEPT BEZEL NICKEL PLT-DULL FINISH

LET	WAS	DATE	BY LET	WAS	DATE	BY	MATERIAL	DRAWN	CHECKED	APPROVD	SCALE	DATE DRAWN	
							S.B	S.B			56300 WITH FULL NARROW BEZEL REPLACING BRKT	3-25-74	
							FINISH					DATE BLUEPRINT	
							TOLERANCES						
							FRACTIONAL ±						
							DECIMAL ±						
				H	10/10/1969	KS							
			G	6/6/1969	43	1-13-75							
			F	REDAWN	NO CHANGE	S.B							
COLE-HERSEE COMPANY BOSTON, MASS. 02127, U.S.A.									SPST ROCKER SWITCH WITH PILOT LIGHT			56300-01 56300-05	

DO NOT SCALE