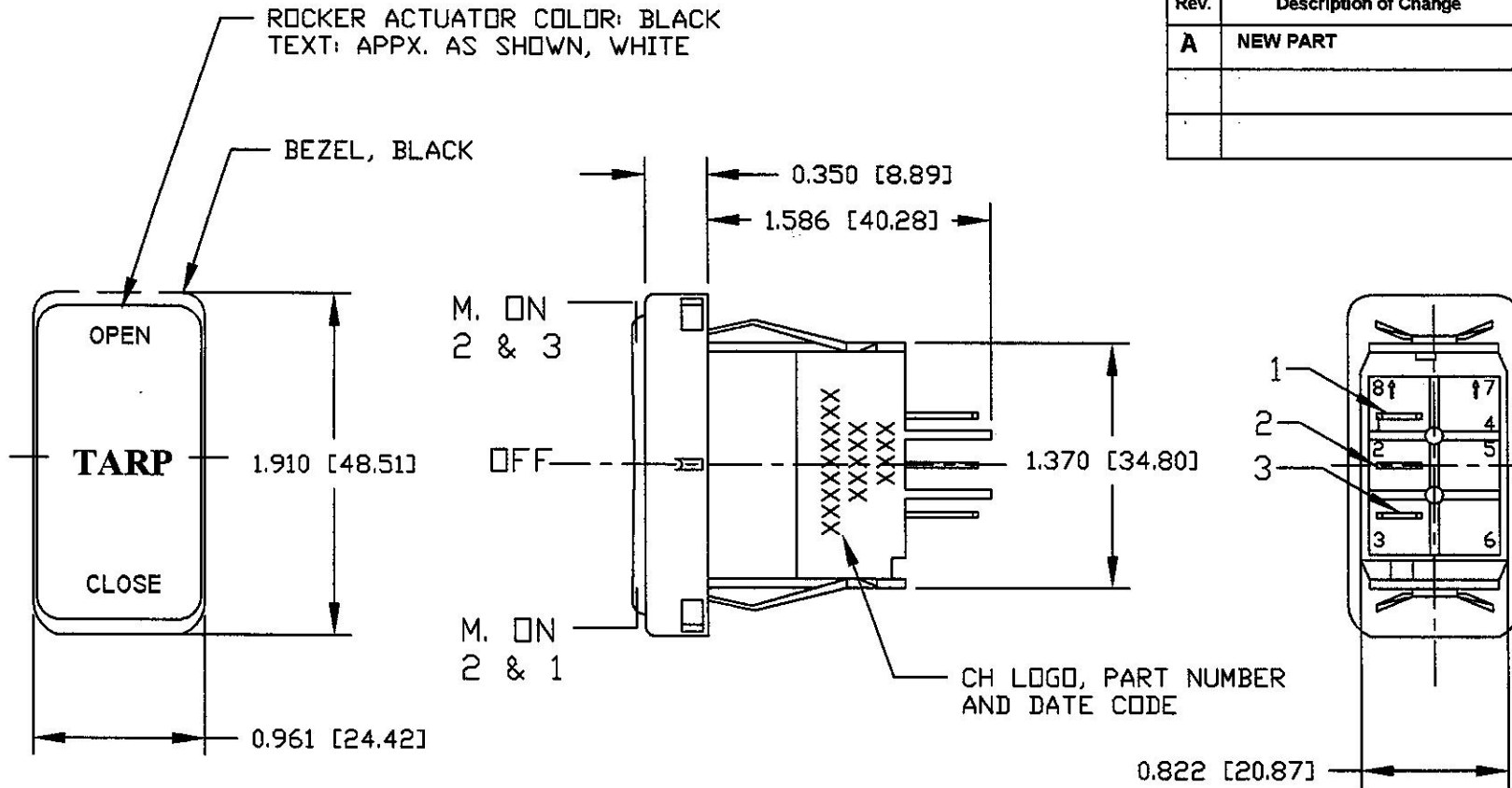


**Revision Control Record**

Rev.	Description of Change	ECN No.	Date
A	NEW PART	06339	10/05/06



**NOTES.**

1. ALL DIMENSIONS ARE REFERENCE
2. SWITCH FITS IN PANEL HOLE SIZE:  
0.830 [21.08] X 1.450 [36.83]
3. RATING: 12-24V DC, 25AMPS/12V; 15A/24V.
4. SILVER CONTACT FOR DURABILITY
4. SEALED FOR WEATHER RESISTANCE.

**Tolerances.** Unless otherwise specifically noted, the following are default tolerances:  
2-place Decimal Dimensions  $\pm 0.02"$   
3-place Decimal Dimensions  $\pm 0.005"$   
Angular Dimensions  $\pm 1.0$  Deg.  
Metric: Refer to equivalent English Dimension Tolerance  
NOTE: All tolerances are Non-Cumulative.

**Dimensional Units.** All dimensions are expressed in inches except those shown in brackets (xxx) are expressed in millimeters

"REF" or an Asterisk \* = Non-Toleranced Reference Dimension, shown for clarification purposes only.

**PROPRIETARY INFORMATION.** This Engineering Drawing, and the information contained herein, is proprietary to Cole Hersee Company and may not be disclosed, re-produced, or in any other way transferred or communicated to any other party without the express written consent of an authorized representative of Cole Hersee Company.

**DESIGN CONTROL.** It is the responsibility of the individual using / referencing this drawing to assure that the noted design revision level agrees with the revision level of the Controlled Document (Master Drawing). This is a NON-CONTROLLED DOCUMENT unless otherwise specifically noted.

DO NOT SCALE - Dimensional variation may occur during printing / reproduction.

**Key for Special Characteristics:**

- Critical Characteristic, relating to Safety and/or Regulatory Compliance
- Significant Characteristic relating to Process Control (SPC)
- Control Dimension relating to Form - Fit - Function as defined by Cole Hersee Company and/or the Customer

(Note that the identification of any Characteristics as being "Special" does not alter the requirement that ALL specified dimensions & tolerances must be met.)



**Cole Hersee Co.**

20 Old Colony Ave., South Boston, MA, 02127  
Phone 617-266-2100 Web: www.colehersee.com

Description: **ROCKER SWITCH**  
M.ON-OFF-M.ON

Drawing / Part No.:

**58337**

Current Rev.

**A**

Used On / For Ref.: **EX28309**

Scale: **1:1**

Drawn By: **GA**

Date Drawn: **10/05/06**

Responsible Engineer: **GA**

Pg. 1 of 1