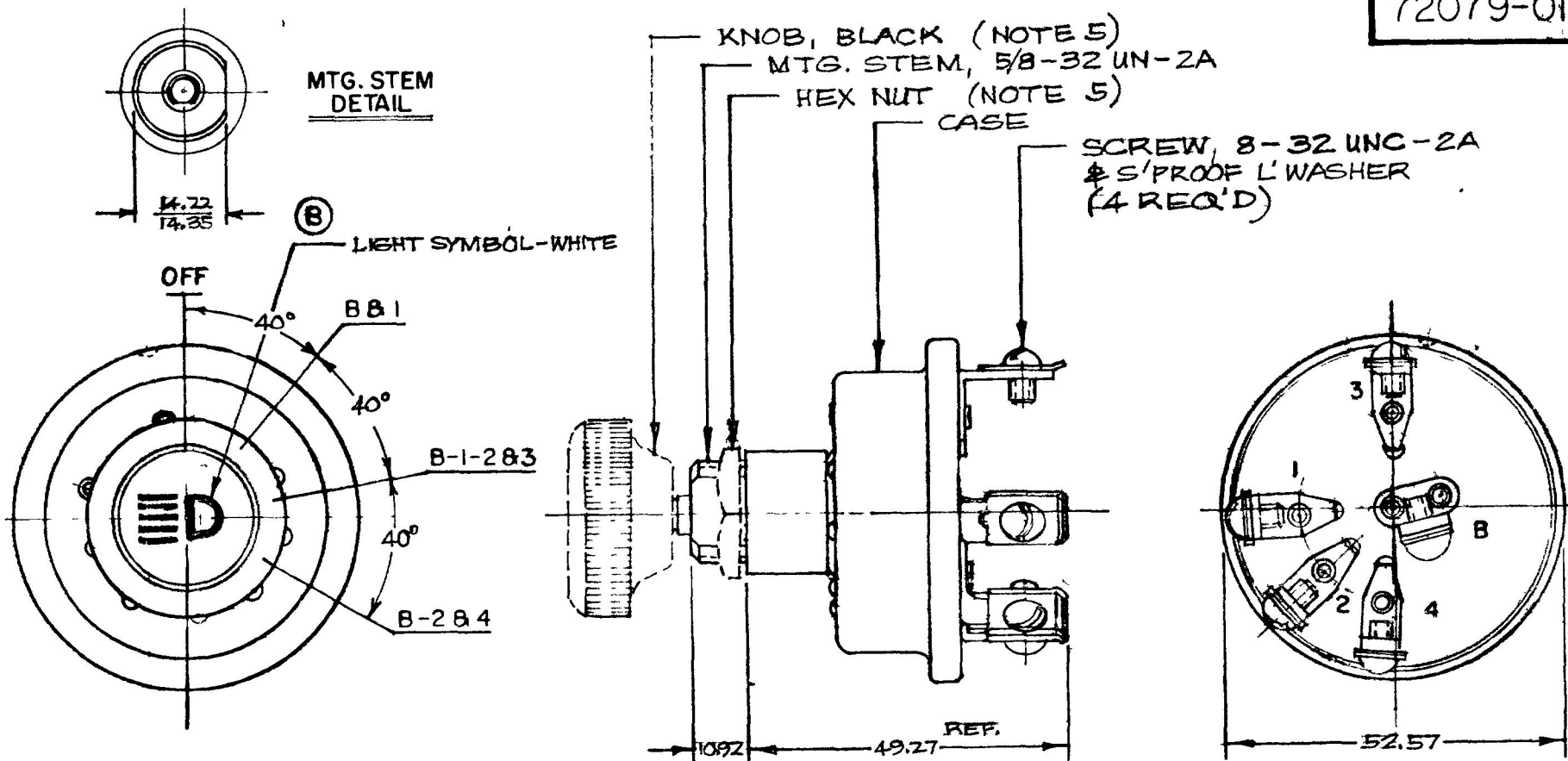


MM IN

25 .010
 10.92 430
 14.22 560
 14.35 580
 52.57 2.070
 68.58 2.700

NPM 7-15-80
 EX-18700

72079-01



NOTE :

1. O-RING SEALED AT MTG. STEM & MTG. STEM SEAT
2. SILVERED CONTACT SURFACES
3. LINEN MELAMINE LINER
4. ALL STEEL PARTS PLATED
5. KNOB & HEX NUT SHIPPED LOOSE

| LEGEND | |
|--------|-------------------------|
| B | BATTERY |
| 1 | HAZARD WARNING |
| 2 | HEADLIGHTS & DISHLIGHTS |
| 3 | TAIL LIGHTS |
| 4 | WORKING LIGHTS |

DO NOT SCALE

| LET | WAS | DATE | BY | LET | WAS | DATE | BY | MATERIAL | DRAWN | CHECKED | APPRV'D | SCALE | 72079, LESS CIRCUIT BREAKER | DATE DRAWN |
|-----|-----|------|----|-----|----------------------------------|---------|----|--------------|-------|---------|---------|-------|-----------------------------|----------------|
| | | | | | | | | # | RMT | 721-80 | | 1:1 | | 7-15-80 |
| | | | | | | | | FINISH | | | | | | DATE BLUEPRINT |
| | | | | B | ECN 24526 | 10/5/80 | BL | | | | | | | |
| | | | | A | REVISED 2/15/83 CIRCUIT TERM. | 9/29/80 | EA | TOLERANCES | | | | | | |
| | | | | | ISSUED | 7/24/80 | Y | DECIMAL ± | | | | | | |
| | | | | | | | | METRIC ± .25 | | | | | | |
| | | | | | | | | | | | | | HEADLAMP SWITCH | 72079-01 |

CH-188(4-78)