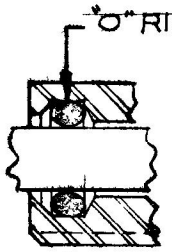


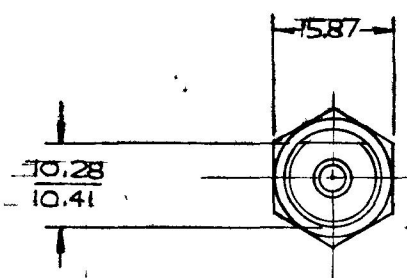
MM	IN
0.25	.010
2.28	.090
7.87	.310
9.65	.380
10.28	.405
10.41	.410
15.87	.625
20.82	.820
26.67	1.050
32.51	1.280
60.70	2.390
14.22	.560

APPLICABLE SAE STANDARD OR
RECOMMENDED PRACTICE SAE J 253

LEGEND	
B	BATTERY
T	TAIL LITES
H	HEAD LITES
P	PARK LITES



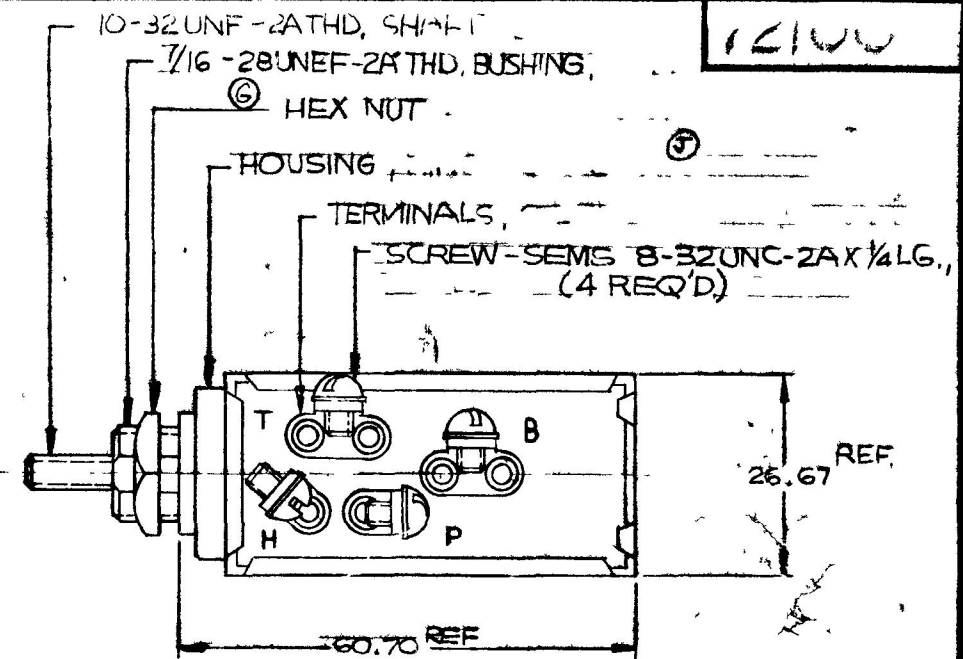
DETAIL OF O-RING SEAL
OF MNTG. STEM., 2X SCALE



B, T & H

B, T & P

"METRIC"



72100

KNOB, BLACK PLASTIC
IMPRINTED "LIGHTS"

14.22 DIA

32.51 REF

9.65

2.28

7.87

7.87

20.82

OFF

NOTES:

1. ALL STEEL PARTS PLATED
2. O-RING SEALED AT BUSHING.
3. GASKET SEALED AT TERM. INSULATOR.
4. SILVERED CONTACT SURFACES. DO NOT SCALE

LET	WAS	DATE	BY	LET	WAS	DATE	BY	MATERIAL	DRAWN	CHECKED	APPRV D	SCALE	DATE DRAWN
				J	ECN 25512	6/8/94	J E	— # —	MF	✓		1:1	3-25-65
				H	22. 125239	11/7/76	H H	FINISH	COLE-HERSEE COMPANY BOSTON, MASS 02127, U.S.A.				DATE BLUEPRINT
				G	REV/20475	12/16/80	G	— # —					
				F	ADDED/20543	4-5-79	JAV	TOLERANCES	LIGHTING SWITCH 72100				
				E	NO DRAWING CHANGE	-17-18	JAV	FRACTIONAL ± DECIMAL ±0.25					