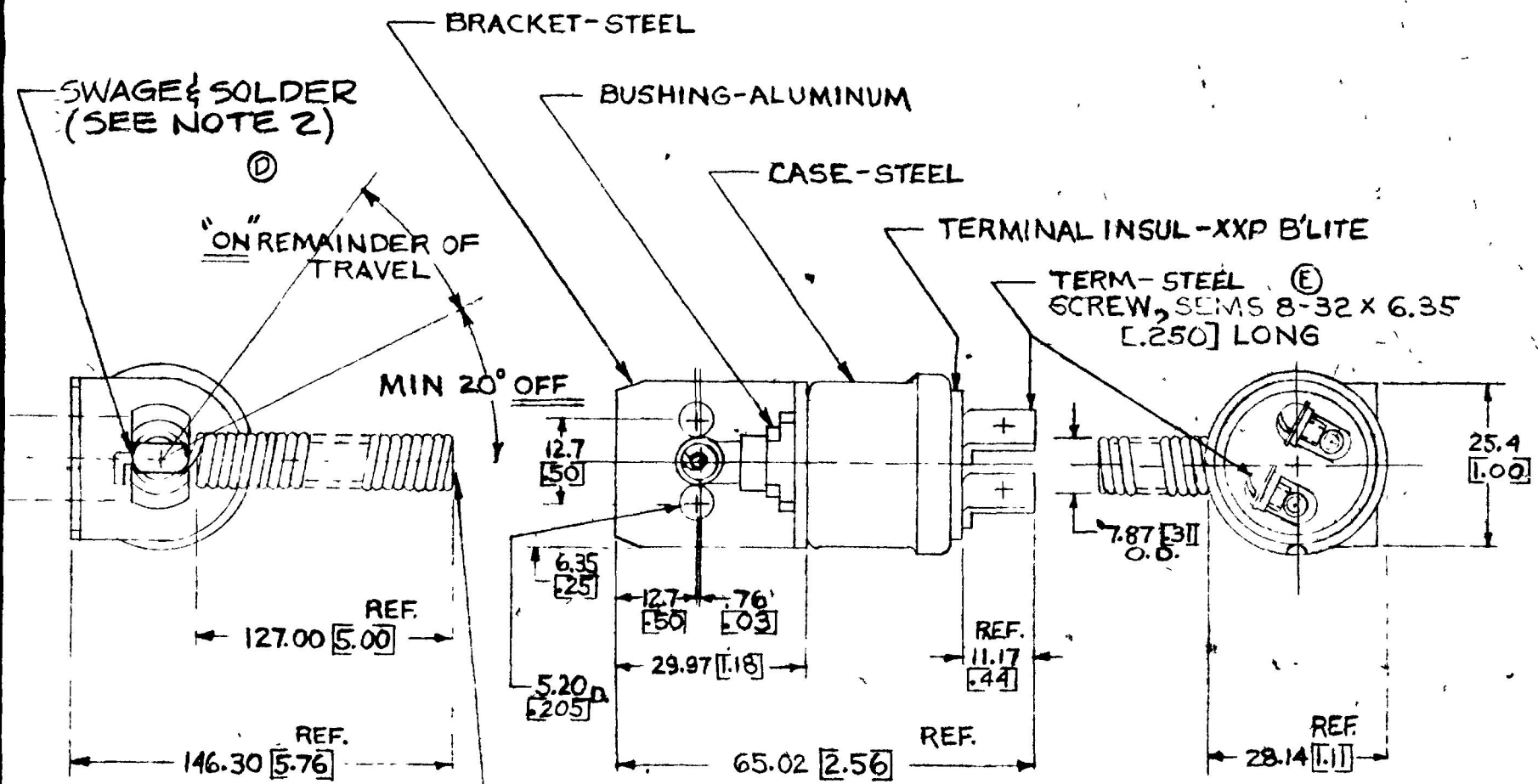


75125

COLE-HERSEE CO.

EX16382



- NOTE-
1. ALL STEEL PARTS EITHER ZINC PLT. WITH DICHDIP. OR CAD. PLT.
 2. SWAGE SHAFT END TO HOLD SPRING LEVER & SOLDER IN PLACE.
 3. DIMENSIONS: MILLIMETER [INCH]

DO NOT SCALE

LET	WAS	DATE	BY	LET	WAS	DATE	BY	MATERIAL	DRAWN	CHECKED	APPR'D	SCALE	DATE DRAWN				
								— / —	RW	B		FULL	5-31-72				
								FINISH	COLE-HERSEE COMPANY				DATE BLUEPRINT				
								— / —	BOSTON, MASS. 02127, U.S.A.								
				E	STEEL	2730	4-25-85	MAX	TOLERANCES FRACTIONAL ± DECIMAL ±.01								
				D	REV.	19579	9-23-76	KG					REVERSE ALARM SW.				75125
				C	REF DRAWN	NO CHANGE	7-30-75	RJG									

SPAULDING CO., INC 23-54269