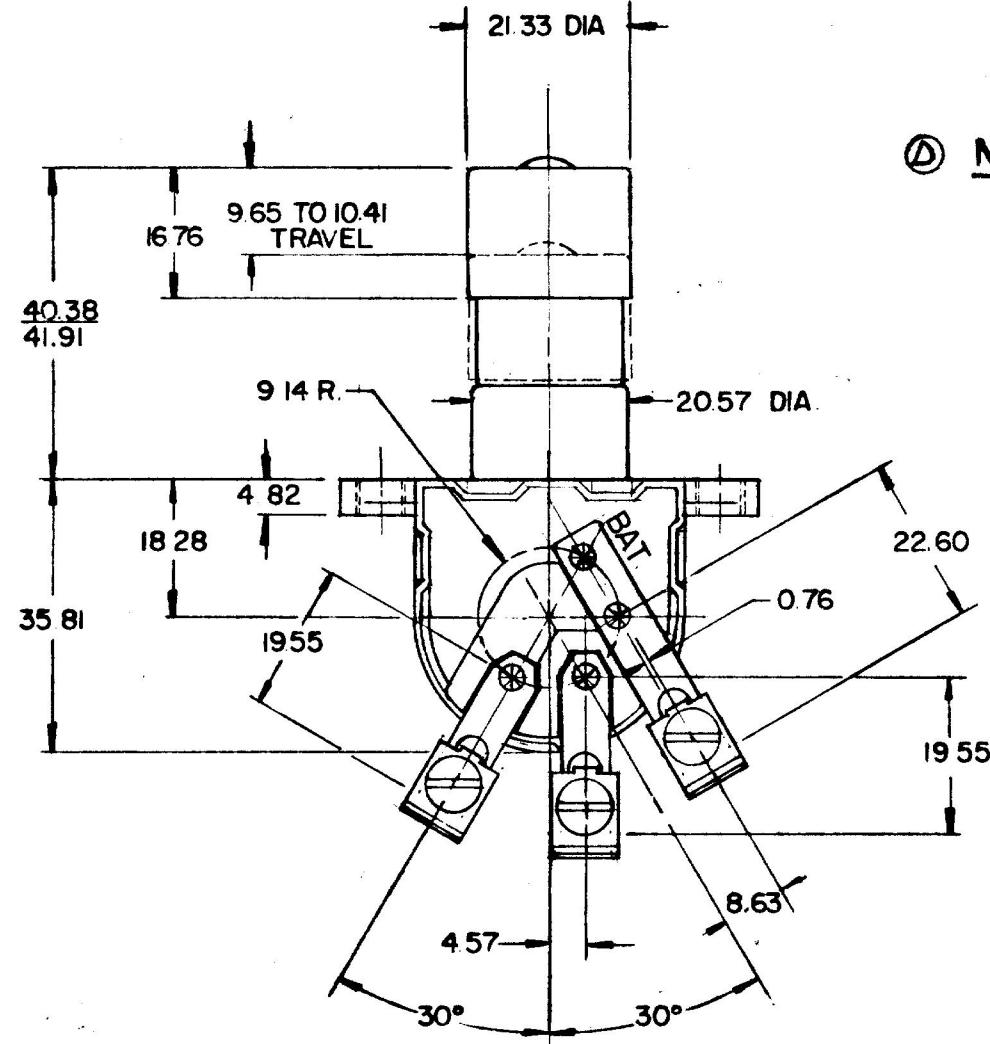
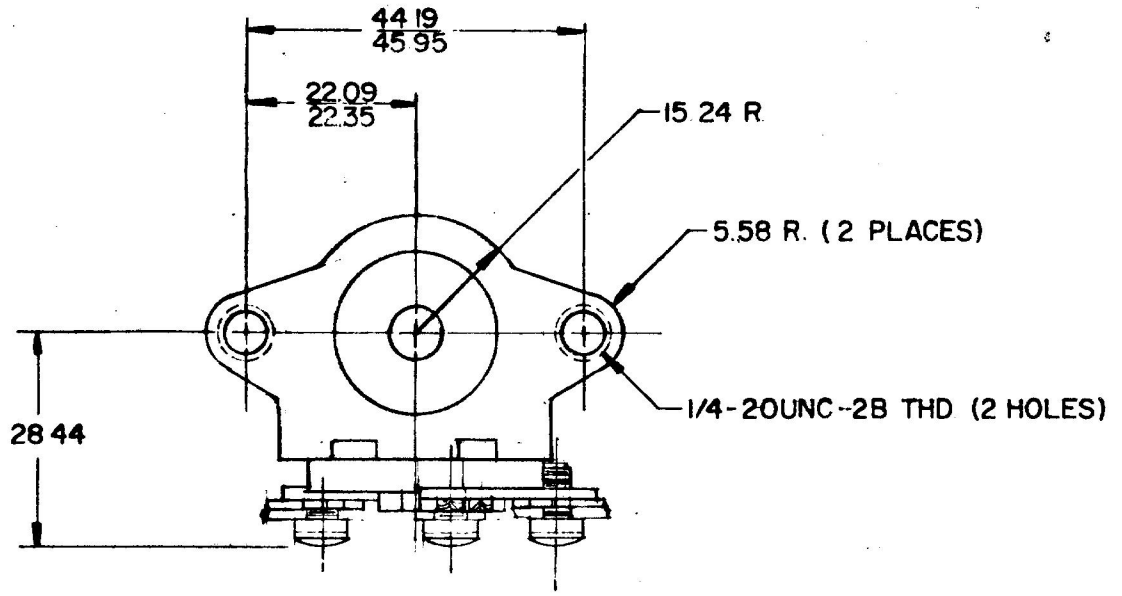
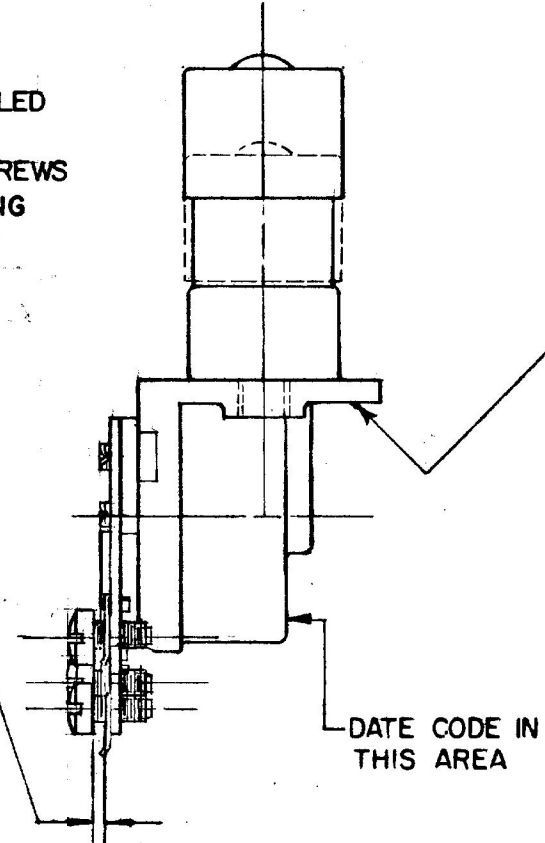


MM	IN
0.50	.020
0.76	.030
2.28	.090
4.57	.180
4.82	.190
5.58	.220
8.63	.340
9.14	.360
9.65	.380
10.41	.410
15.24	.600
15.76	.660
18.28	.720
19.55	.770
20.57	.810
21.33	.840
22.09	.870
22.35	.880
22.60	.890
28.44	1.120
35.81	1.410
40.38	1.590
44.19	1.740
45.95	1.760

COLE-HERSEE CO.  
NPM 6-8-77



**NOTE:**  
TERMINAL SCREWS TO BE ASSEMBLED WITH CLEARANCE FOR TERMINAL L'WASHER ASSEMBLY. SCREWS TO BE TIGHT TO PREVENT CHANGING POSITION IN SHIPMENT.



BASE, ZINC DIE CAST, DICHROMATED  
TERMINALS, STEEL, ZINC PLATED  
BUTTON, STEEL, ZINC PLATED  
CONTACT, COPPER CADMIUM  
BACK, MOLDING MATERIAL

METRIC

DO NOT SCALE

LET	WAS	DATE	BY	LET	WAS	DATE	BY	MATERIAL	DRAWN	CHECKED	APPR'D.	SCALE	DATE DRAWN
								#	RMT	3-30-78		FULL	3-15-77
								#					DATE BLUEPRINT
				D	REVISED NOTE	21338	3-4-81						
				C	DATE IN DRAWING	4-3-78							
				B	DATE IN DRAWING	3-30-78							
								TOLERANCES					
								FRACTIONAL ±					
								DECIMAL ± .02					
												COLE-HERSEE COMPANY	
												BOSTON, MASS. 02127, U.S.A.	
												DIMMER SWITCH	7787