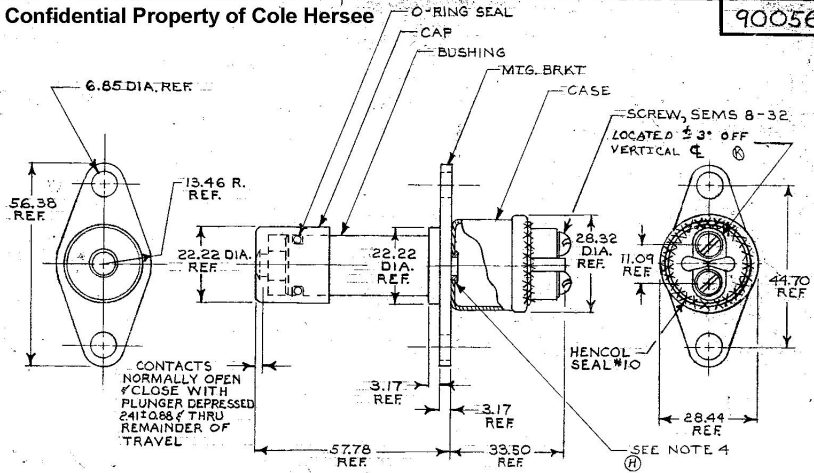


MM. IN  
 0.88 .035  
 2.41 .095  
 3.17 .125  
 6.85 .270  
 11.09 .437  
 13.46 .530  
 22.22 .875  
 28.32 1.115  
 28.44 1.120  
 33.50 1.319  
 44.70 1.760  
 56.38 2.220  
 57.78 2.275

90056

Confidential Property of Cole Hersee



- NOTES:  
 1. SILVER CONTACT SURFACES  
 2. ALL STEEL PARTS PLATED  
 3. RATING:  
    35 AMPS @ 12VDC  
    20 AMPS @ 24VDC  
 4. HENCOL SEAL #13 AT CASE & BUSHING JOINT

**METRIC**

- ① 6. MARK DATE CODE ON CASE IN RANDOM LOCATION  
 ② 7. YELLOW DOT FOR IDENTIFICATION ONLY, ON CASE IN RANDOM LOCATION

LET.	WAS	DATE	BY	LET.	WAS	DATE	BY	MATERIAL	DRAWN	CHECKED	APPROVD.	SCALE	DATE DRAWN
				L	ECN 02103	5/14/02	ML	<i>AK</i>	EA	<i>AK</i>	<i>AK</i>	1:1	1-5-78
				K	ECN 26621	4/11/97	AK	FINISH					DATE BLUEPRINT
				J	ECN 26379	11/2/96	AK	<i>AK</i>					
				H	ADD HENCOL 13/22843	9-13-84	AK	TOLERANCES					
				G	REDRAWN	10-29-84	AK	DECIMAL ± METRIC ±					

**CH. Cole Hersee Co.**  
3000 COLONY PARK, SMITHSBORO, MD. U.S.A. 21787

**FOOT SWITCH 90056**