

9115

TERMINAL INSULATOR- BLITE

5410 SCREW 8-32 THD-STEEL

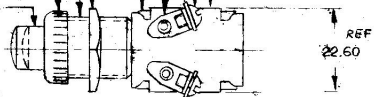
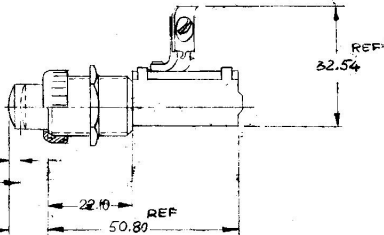
3017-8 LOCKWASHER-STEEL
C TERMINAL, BRASS.
CASE STEEL

B507 PAL NUT. STEEL

BUSHING 5/8-32-UN-2A ALUMINUM

8304 FACE NUT-BRASS CHROME PLT

PLUNGER BUTTON BRASS ROLLED CHROME

REF
32.54

"NORMALLY ON"
OFF WHEN DEPRESSED 3.05
AND THRU REMAINDER OF
TRAVEL

NOTE:

ⓐ 1. ALL STEEL PARTS PLATED

METRIC

Confidential Property of Cole Hersee

DO NOT SCALE

LET.	WAS	DATE	BY	LET.	WAS	DATE	BY	MATERIAL	DRAWN	CHECKED	APPR'D	SCALE	DATE DRAWN
								NOTED	MW	LPG	[Signature]	1:1	2-12-87
								FINISH					DATE BLUEPRINT
								NOTE 1					
								TOLERANCES					
								DECIMAL ±					
								METRIC ±					
									 Cole Hersee Co. 				9115
									STARTER SWITCH				9115