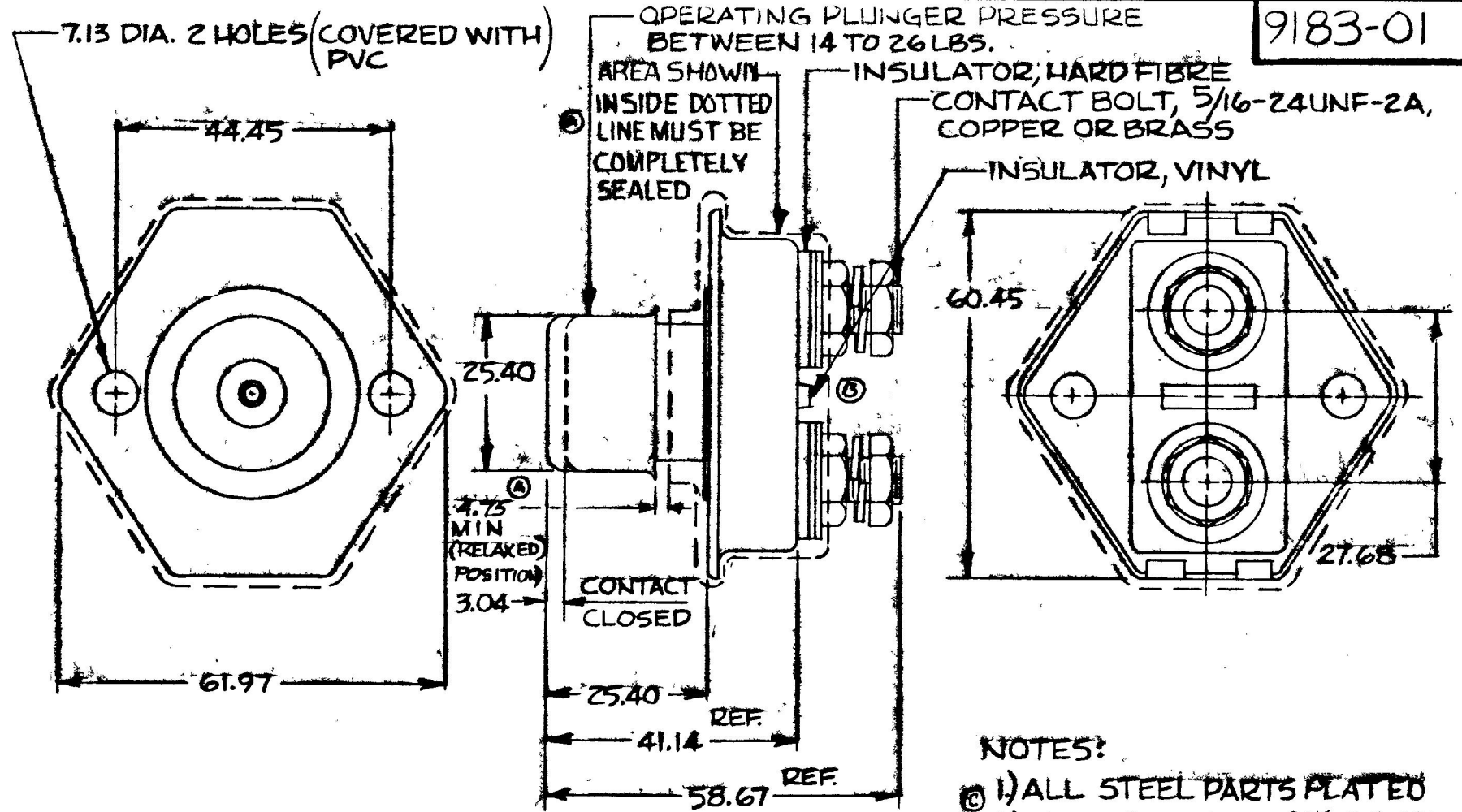


3.04	1.28
7.13	2.91
25.40	1.000
27.68	1.090
31.14	1.620
44.45	1.750
58.67	2.310
61.97	2.380
66.97	2.440
71.75	2.810

COLE-HERSEE CO.  
NPM 8-4-76

9183-01



NOTES:

- Ⓐ 1) ALL STEEL PARTS PLATED
- Ⓑ 2) ALL DIM'S ARE REF ONLY
- 3) DOTTED AREA COATED WITH HENCOL SEAL #12

35 AMPS @ 12 VDC

METRIC

DO NOT SCALE

LET	WAS	DATE	BY	LET	WAS	DATE	BY	MATERIAL	DRAWN	CHECKED	APPR'D	SCALE	BASIC, EXCEPT W/ EXTRA NUT & PVC COATED	DATE DRAWN
				D	98573	8/2/98	W	—	KG	FP		1:1		7-26-76
				C	ZINC 125231	12/22/76	JM	FINISH	COLE-HERSEE COMPANY BOSTON, MASS. 02127, U.S.A.					DATE BLUEPRINT
				B	ECN 23188	7-1-76	JK	—						
				A	ADDED DIM & NOTE ENC 21999	2-1-83	PS	TOLERANCES FRACTIONAL ± DECIMAL ±	STARTER SWITCH					9183-01
					ISSUED	8376	Y							