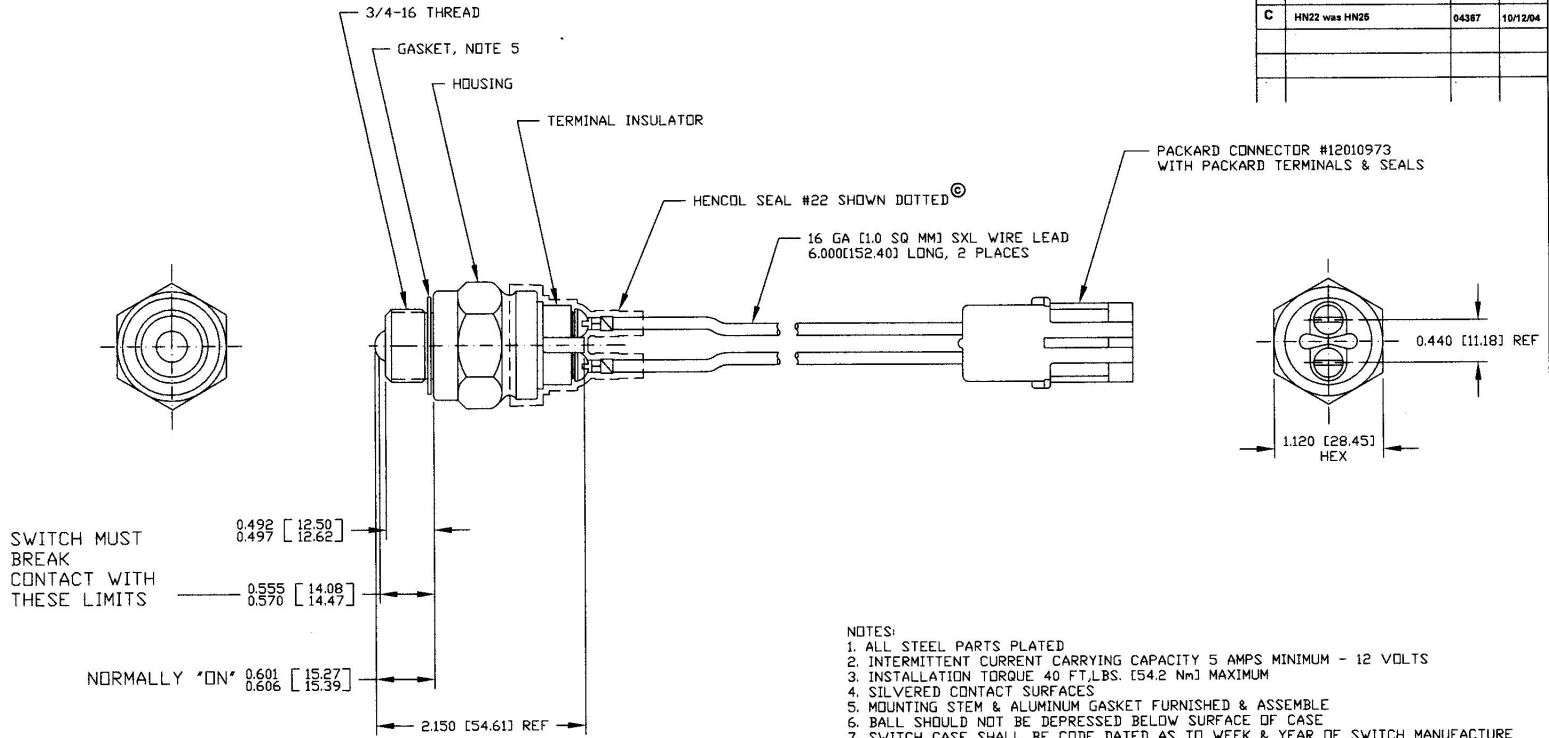


Revision Control Record			
Rev.	Description of Change	ECN No.	Date
B	GASKET	01205	4/10/01
C	HN22 was HN25	04387	10/12/04



- NOTES:
1. ALL STEEL PARTS PLATED
 2. INTERMITTENT CURRENT CARRYING CAPACITY 5 AMPS MINIMUM - 12 VOLTS
 3. INSTALLATION TORQUE 40 FT.LBS. [54.2 Nm] MAXIMUM
 4. SILVERED CONTACT SURFACES
 5. MOUNTING STEM & ALUMINUM GASKET FURNISHED & ASSEMBLE
 6. BALL SHOULD NOT BE DEPRESSED BELOW SURFACE OF CASE
 7. SWITCH CASE SHALL BE CODE DATED AS TO WEEK & YEAR OF SWITCH MANUFACTURE

Tolerances: Unless otherwise specifically noted, the following are typical tolerances:
 • Unless Dimensional Dimensional: ± 0.005
 • Unless Dimensional Dimensional: ± 0.005
 • Angular Dimensional: ± 0.10 Deg.
 • Material: Refer to applicable English Dimensional Tolerances
 *** NOTE: All tolerances are Non-Cumulative. ***

Dimensional Note: All dimensions are expressed in inches except those shown in brackets () are expressed in millimeters.

SEE "ON AN ASSEMBLY" - Non-Tolerance Reference Dimension, shown for identification purposes only.

Used On: **1**
 or Ref: **1**

PROPRIETARY INFORMATION: This Engineering Drawing, and the information contained herein, is proprietary to Cole Hersee Company and may not be disclosed, reproduced, or in any way transmitted or communicated to any other party without the express written consent of an authorized representative of Cole Hersee Company.

DESIGN CONTROL: It is the responsibility of the individual using/ referring this drawing to ensure that the metal usage section (and agrees with the revision level of the Certified Document (Master Drawing). This is a NON-CONTROLLED DOCUMENT unless otherwise specifically noted.

DO NOT SCALE: Dimensional variation may occur during printing/ reproduction.

Drawn: **LIZ**
 Date Drawn: **8/27/90**

Key for Special Characteristics:

(X) Critical Characteristics, relating to Safety and/or Regulatory Compliance.

(*) Significant Characteristics relating to Process Control (SPC).

(C) Control Dimension (relating to Form - Fit - Function as defined by Cole Hersee Company and/or the Customer).

(N) Note that the identification of any characteristics as being "Special" does not alter the requirement that ALL specified dimensions & tolerances must be met.

Responsible Engineer: **N/A**
 Pg. 1 of 1

Cole Hersee Co.
 20 Old Colony Ave., South Boston, MA, 02127
 Phone 617-268-3100 Web: www.colehersee.com

Description: **SWITCH, BALL, NC**

Drawing / Part No.: **9224-26**

Current Rev.: **C**