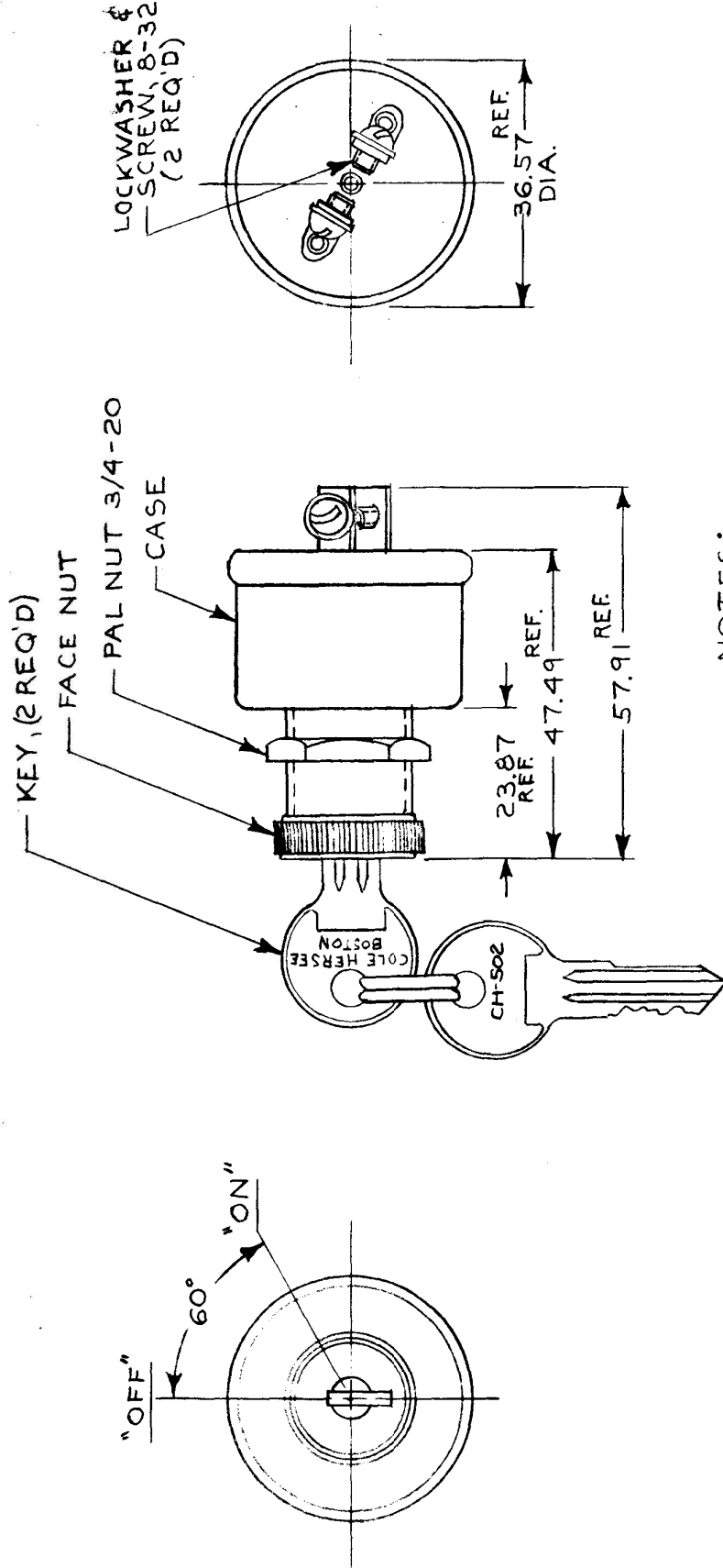


APPLICABLE SAE STANDARD OR
RECOMMENDED PRACTICE SAE J259

9518

MM IN
19.05 .750
22.22 .875
23.87 .940
36.57 1.440
47.49 1.870
57.91 2.280



NOTES:

- 1. 8367 ADAPTER FACE NUT PERMITS ASSY OF SWITCH TO 19.05 & 22.22 DIA. PANEL HOLES.
- 2. 250 KEY COMBINATIONS; REMOVABLE IN BOTH POSITIONS.
- 3. ALL STEEL PARTS PLATED.

METRIC

DO NOT SCALE

LET.	WAS	DATE	BY/LET	WAS	DATE	BY	MATERIAL	DRAWN	CHECKED	APPROV'D	SCALE	DATE DRAWN
							X	JP	<i>[Signature]</i>		1:1	3-27-58
							FINISH					DATE BLUEPRINT
							TOLERANCES	CH Cole Hersee Co. <small>BUILDING 40-21 BRUNNING RD. BOSTON, MA. U.S.A. 02127</small>				
							DECIMAL ±				SWITCH, S.P.S.T. LOCK	
							METRIC ±					

CH-188(4-78)

BRUNNING 40-21 6375