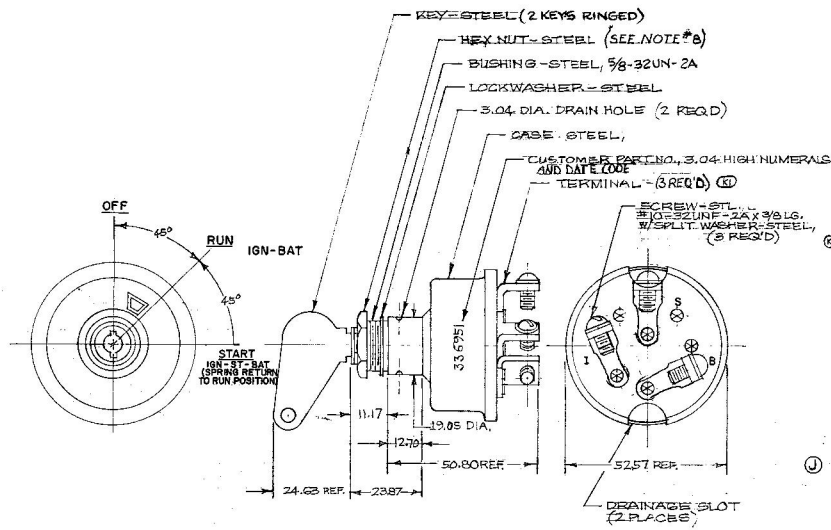


COLE-HERSEE CO.

EX-14892



NOTES

1. SILVER LAMINATED CONTACTS IN START POSITION
2. NUMBER OF POLES : 1
NUMBER OF THROWS : 2
3. SEALING : 1/16" RING AT MTDG. STEM & SHAFT
4. ALL STEEL PARTS PLATED
5. RATING:
12V - 70 AMP COMBINED LOAD
24V - 30 AMP COMBINED LOAD
LIFE @ RATED CURRENT
MAKE AND BREAK
12V - 25,000 CYCLES
24V - 10,000 CYCLES
6. KEY REMOVABLE IN OFF POSITION ONLY
7. APPLICABLE SAE STANDARD OR RECOMMENDED PRACTICE SAE J269
- ① 8. INSTALLATION TORQUE 6.75 Nm [5FT. LBS.]

LEGEND	
I	IGNITION
S	START
B	BATTERY

METRIC

LET	WAS	DATE	BY	LET	WAS	DATE	BY	MATERIAL	FINISH	TOLERANCES: FRACTIONAL ± .38 DECIMAL ± .25

DO NOT SCALE

CONFIDENTIAL PROPERTY OF COLE HERSEE

SCALE 3/5521 WITH DRAIN HOLES IN CASE & TERM. INOUL.

COLE-HERSEE COMPANY
BOSTON, MASS. 02127, U.S.A.

**WEATHER-PROOF
HEAVY DUTY IGNITION SW.**

DATE DRAWN 9-15-67
DATE BLUEPRINT
95521-02