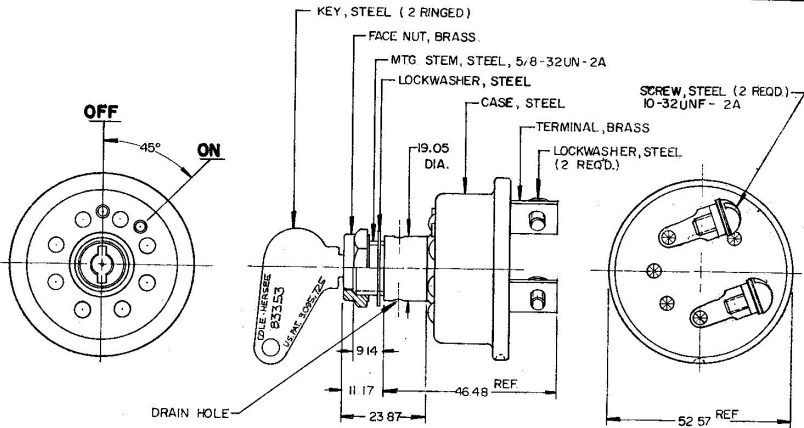


MM	IN
0.25	0.010
3.17	0.125
6.35	0.250
12.7	0.500
19.05	0.750
25.4	1.000
31.75	1.250
38.1	1.500
44.45	1.750
50.8	2.000

APPLICABLE SAE STANDARD OR RECOMMENDED PRACTICE SAE J259

955 97



NOTES: 1. ALL STEEL PARTS PLATED

Confidential Property of Cole Hersee

**METRIC**

- 0-RING SEALED AT BUSHING
- SILVER LAMINATED CONTACT SURFACES
- 50 AMPS RATING AT 14 VOLTS.

DO NOT SCALE

LET	WAS	DATE	BY	LET	WAS	DATE	BY	MATERIAL	DRAWN	CHECKED	APPROVD	SCALE	DATE DRAWN			
								11	EA	PS		1:1	12-8-67			
								FINISH					DATE BLUEPRINT			
				G	F(N 01049)	1-17-61	MP		 <b>IGNITION SWITCH</b>				955 97			
				F	CADUR 2142 125234	11/4/92	SH	TOLERANCES								
				E	REDRAWN	10-6-78	JV	FRACTIONAL ±								
								DECIMAL ±.25								