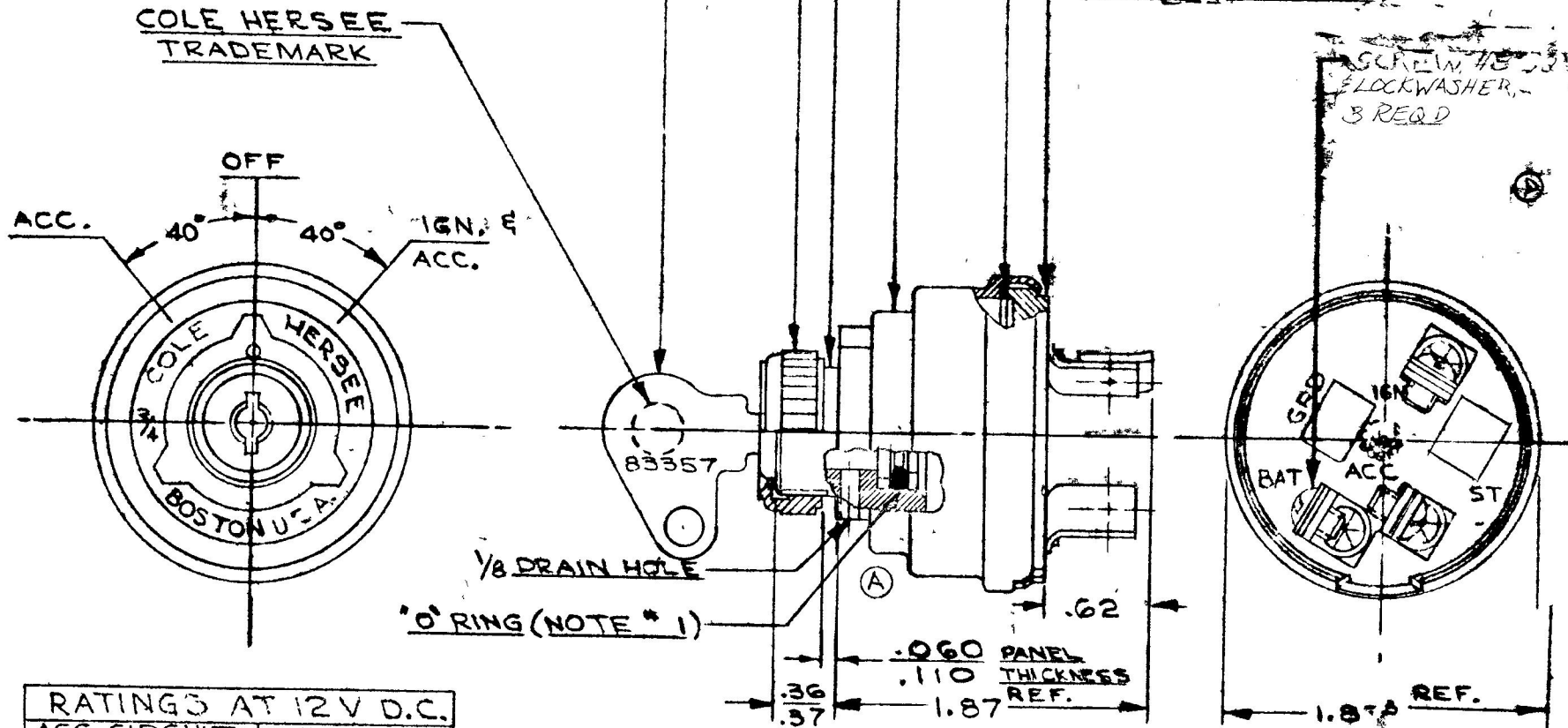


COLE-HERSEE CO.

APPLICABLE SAE STANDARD OR RECOMMENDED PRACTICE SAE J259



956-6307

RATINGS AT 12 V D.C.	
ACC. CIRCUIT	10 AMPS
IGN.	10

- NOTE:
1. SHAFT "O" RING SEALED TO CASE
  2. TERMINAL INSULATOR GASKET SEALED
- © 3 ALL STEEL PARTS PLATED

REV	WAS	DATE	BY	REV	WAS	DATE	BY	MATERIAL	DRAWN	CHECKED	APPROV'D	SCALE	USED ON	DATE DRAWD
				F	FCM COPY	3/2/88	MA		CF	UM		FULL		1-31-67
				C	NOTE 3 ADDED	12/18/92	JH							
				B	HOUSING	8-17-82	RS							
				A	STL SPEC ADDED	3-4-74	W							
					ISSUED	3-9-67	HF							
<b>COLE-HERSEE COMPANY</b> BOSTON 27, MASS., U.S.A.													DATE DRAWD	
VOLTAIRES FRACTIONAL ± DECIMAL ± .00													PART NO	
<b>ACC-IGNITION SWITCH</b>													956-6307	