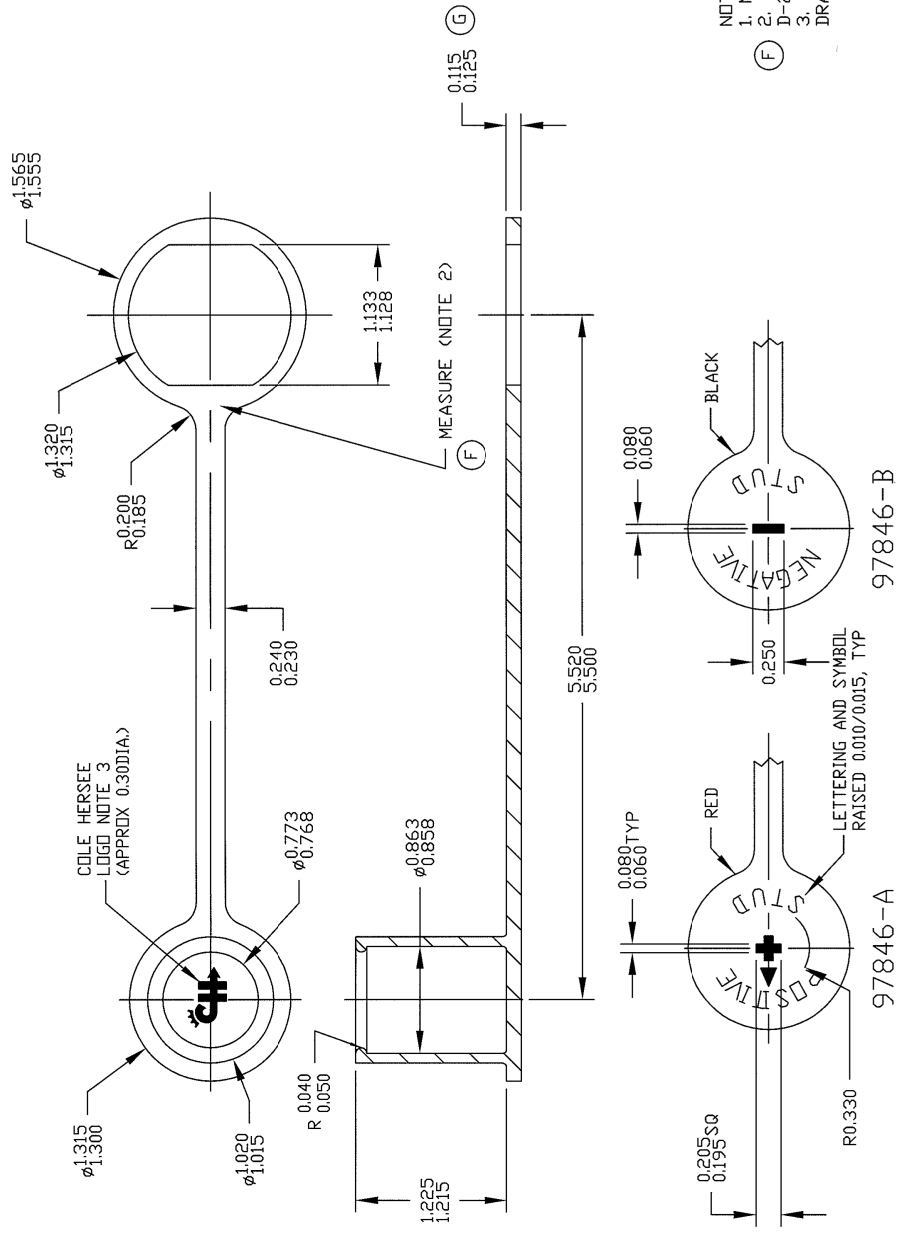


Revision Control Record

Rev.	Description of Change	ECN No.	Date
E	AUTOCAD, LOGO	06424	10/26/05
F	NOTE 2 CHANGE	06300	9/07/06
G	ADDED DIM	11233	7/20/11



NOTES:
 1. MATERIAL: COASTAL DC-834, PVC
 2. DURAMETER 60-75 SHORE A, PER ASTM SPEC. D-2287
 3. FOR LOGO PROPORTIONS SEE COLE HERSEE DRAWING TA 139

Cole Hersee Co.
 20 Old Colony Ave., South Boston, MA, 02127
 PInn: 617-288-2100 Web: www.colehersee.com

CH

Description:
CAP

Drawing/ Part No.:
97846-A & B

Special Characteristics:
 Critical Characteristic, relating to Safety and/or Regulatory Compliance
 Significant Characteristic, relating to Process Control (SPC)
 Control Dimension relating to Form - Fit - Function as defined by Cole Hersee Company and/or the customer.
 Special does not alter the requirement that ALL specified dimensions & tolerances must be met!

Responsible Engineer: **SAM**

Pg. 1 of 1

PROPRIETARY INFORMATION: This Engineering Drawing and the information contained herein are the property of Cole Hersee Company and may not be disclosed, reproduced, or in any other way transmitted or communicated to any other party without the express written consent of an authorized representative of Cole Hersee Company.
 DESIGN CONTROL: It is the responsibility of the individual user/manufacturer to ensure that the noted design revision (Master Drawing) is a NOT-CONTROLLED DOCUMENT unless otherwise specifically noted.
 DO NOT SCALE: Dimensional variation may occur during printing/reproduction.

Date Drawn: **6/19/80**

Tolerances: Unless otherwise specifically noted, the following apply:
 • 2-place Decimal Dimensions +/- .02"
 • 3-place Decimal Dimensions +/- .005"
 • Metric: Refer to equivalent English Dimension Tolerance
 >>> NOTE: All tolerances are Non-Cumulative. <<<
 Dimensional Units: All dimensions are expressed in inches except those shown in brackets (mm) are expressed in millimeters.
 REF: 62.00.00.00.01.01 = Non-Toleranced Reference Dimension, shown for dimensional purposes only.

Used On: **EX1810A-10** Scale: **1:1**

Dr: **46210-01**

97846-B

97846-A

LETTERING AND SYMBOL RAISED 0.010/0.015, TYP