

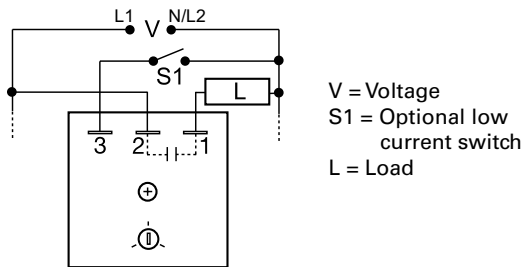
FSU1000 SERIES



OBSOLETE



Wiring Diagram



Ordering Information

MODEL	INRUSH RATING	LOAD RATING
FSU1000	10A	1A
FSU1003	60A	6A
FSU1004	100A	10A
FSU1005	200A	20A

If you don't find the part you need, call us for a custom product 800-843-8848

Description

The FSU1000 incorporates an onboard adjustable flash rate of 10 to 100 FPM and a universal input voltage in one device. Its circuitry is encapsulated and is capable of controlling loads of up to 20A. The versatility of the FSU1000 makes it ideal for applications where various flash rates and operating voltages are required.

Operation

When input voltage is applied to terminal 2 and the load (lamp), the load energizes steadily. When input voltage is applied to terminal 3, the output flashes.

Optional Low Current Switch (S1): This low current switch could be a limit switch or contact. While open, the operator sees the load (lamp) ON and operating. When the limit switch closes, the load (lamp) flashes to attract attention.

Features & Benefits

FEATURES	BENEFITS
Universal input voltage 24 to 240VAC	Allows flexibility for a wide range of applications with one part
Onboard adjustable flash rate	Provides flexibility for user to select flash rate between 10 - 100 FPM
Totally solid state and encapsulated	No moving parts to arc and wear out over time and encapsulated to protect against shock, vibration, and humidity
High output rating up to 20A, 200A inrush	Allows direct operation of high current loads without a contactor

Accessories



P1015-13 (AWG 10/12), **P1015-64** (AWG 14/16), **P1015-14** (AWG 18/22) **Female Quick Connect**

These 0.25 in. (6.35 mm) female terminals are constructed with an insulator barrel to provide strain relief.



P1015-18 Quick Connect to Screw Adapter
Screw adapter terminal designed for use with all modules with 0.25 in. (6.35 mm) male quick connect terminals.

FSU1000 SERIES

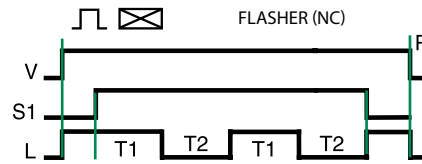
Specifications

Technical Data

Operation	ON/OFF recycling solid-state flasher (continuous duty)
Flash Rate	Adjustable 10 - 100 FPM
ON/OFF Ratio	≈ 50%
Input	
Range/Frequency	24 to 240VAC / 50/60Hz
Output	
Load Type	Inductive, resistive, or incandescent
Maximum Load Rating	1, 6, 10, or 20A steady state
Inrush	10 times steady state current
Mechanical	
Mounting*	Surface mount with one #10 (M5 x 0.8) screw
Dimensions	
FSU1000	H 50.8 mm (2"); W 50.8 mm (2"); D 30.7 mm (1.21")
FSU1003, FSU1004	H 50.8 mm (2"); W 50.8 mm (2"); D 38.4 mm (1.51")
Termination	0.25 in. (6.35 mm) male quick connect terminals
Protection	
Circuitry	Encapsulated
Environmental	
Operating/Storage Temperature	-20° to 60°C (240VAC +50°C) / -40° to 85°C
Weight	1A units: ≈ 2.4 oz (68 g) ≥ 6A units: ≈ 3.9 oz (111 g)

*Units rated > 6A must be bolted to a metal surface using the included heat sink compound. The maximum mounting surface temperature is 90°C.

Flasher Function Diagram



V = Voltage
S1 = Initiate Switch
L = Load
R = Reset
T1 = ON Time
T2 = OFF Time
T1 ≈ T2