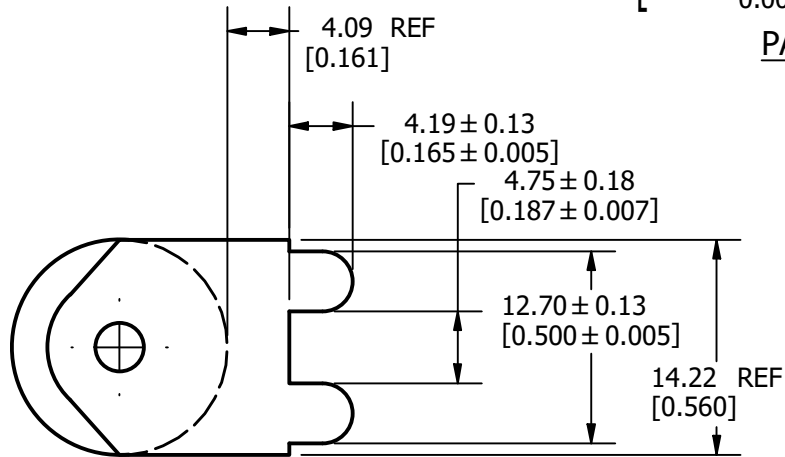
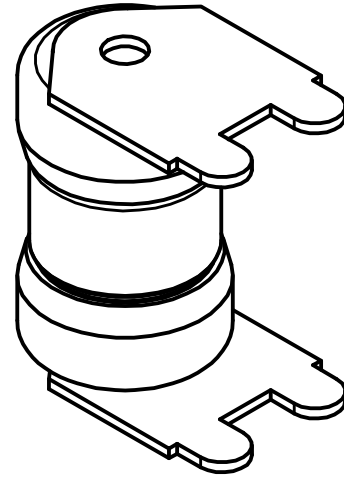
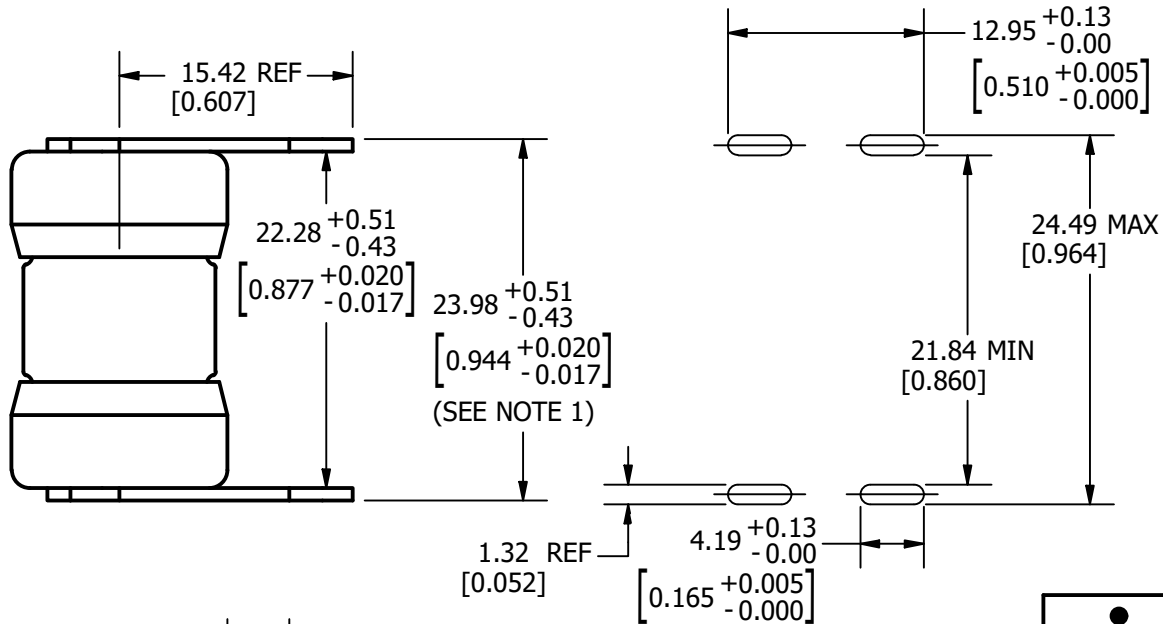


REVISION		
REV	DATE	DESCRIPTION
A	2/15/18	518846GCP - RELEASE PER EM3011 MRY



PAD LAYOUT

NOTE:
1. MEASUREMENT TAKEN AT END OF TERMINALS.

LEAD-FREE SOLDERING PROFILE:

PRE-HEAT: ABOVE 130°C FOR 75 SECONDS MAX.
REFLOW: 278°C FOR 8 SECONDS MAX.
TIME: 250 SECONDS MAX.
MAX. TEMP: 280°C

●	DENOTES CRITICAL CHARACTERISTICS.
CPK	DENOTES CPK DIMENSIONS, -MINIMUM CPK VALUE
⊠	DENOTES A CHARACTERISTIC THAT PROVIDES AN INDICATION OF PROCESS PERFORMANCE. PROCEDURE FOR MEASUREMENT AND TRACKING TO BE DEFINED IN LITTELFUSE INSPECTION INSTRUCTIONS.
CP	DENOTES CP DIMENSIONS, -MINIMUM CP VALUE MUST BE WITHIN THE DIMENSIONAL LIMITATIONS SHOWN ON DRAWING AND INITIALLY LOCATED TO ALLOW FOR MAXIMUM TOOL LIFE.

A

MATL SPEC		FINISH	
DRW MYORK	DATE 1/17/2018	SCALE NTS	FINISH GOOD WT GRAMS/PIECE

UNLESS OTHERWISE SPECIFIED, DIMENSIONS ARE IN MILLIMETERS, DIMENSIONS IN BRACKETS [] ARE INCHES DIMENSIONING AND DO NOT INCLUDE PLATING. TOLERANCING TO BE INTERPRETED IN ACCORDANCE WITH ANSI Y14.5M-1994

3RD ANGLE PROJECTION	
----------------------	--

TITLE	JLLN-LSE OUTLINE
--------------	------------------

Littelfuse CHICAGO, ILLINOIS 60631	REVISION A	DRWG NO. OL-JLLN000LSE	SHEET 1 OF 1
--	----------------------	----------------------------------	--------------