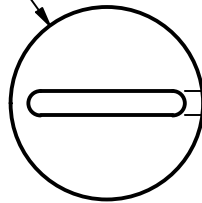
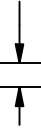


Ø50.80  
[Ø2.000]

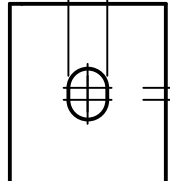
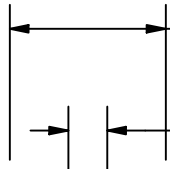


6.35 ± 0.08  
[0.250 ± 0.003]



41.28 ± 0.89  
[1.625 ± 0.035]

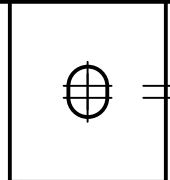
10.32 ± 0.13  
[0.406 ± 0.005]



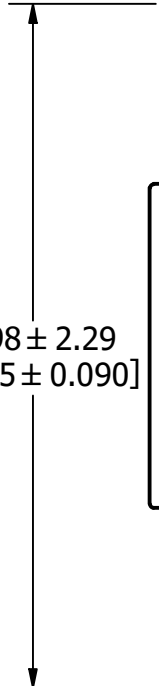
136.46  
[5.373]

130.18  
[5.125]

85.73 ± 0.76  
[3.375 ± 0.030]



180.98 ± 2.29  
[7.125 ± 0.090]



REVISION		
REV	DATE	DESCRIPTION
A	6/21/22	525355GCP - RELEASE MRY

APPROX. SHIPPING WEIGHT: 1 FUSE = 1.7 LB

1	NO	COMPONENT NO	DESCRIPTION	QTY/M	U/M
---	----	--------------	-------------	-------	-----

**BILL OF MATERIAL**

<S>	CRITICAL CHARACTERISTIC FOR PART SAFETY/COMPLIANCE
●	DENOTES CRITICAL CHARACTERISTICS.
CPK	DENOTES CPK DIMENSIONS, -MINIMUM CPK VALUE
⊠	DENOTES A CHARACTERISTIC THAT PROVIDES AN INDICATION OF PROCESS PERFORMANCE. PROCEDURE FOR MEASUREMENT AND TRACKING TO BE DEFINED IN LITTELFUSE INSPECTION INSTRUCTIONS.
CP	DENOTES CP DIMENSIONS, -MINIMUM CP VALUE MUST BE WITHIN THE DIMENSIONAL LIMITATIONS SHOWN ON DRAWING AND INITIALLY LOCATED TO ALLOW FOR MAXIMUM TOOL LIFE.

**A**

MATL SPEC	FINISH
-----------	--------

DRW Jeff Moler	DATE 6/16/2022	SCALE NTS	FINISH GOOD WT GRAMS/PIECE
-------------------	-------------------	--------------	-------------------------------

UNLESS OTHERWISE SPECIFIED, DIMENSIONS ARE IN MILLIMETERS, DIMENSIONS IN BRACKETS [ ] ARE INCHES DIMENSIONING AND DO NOT INCLUDE PLATING. TOLERANCING TO BE INTERPRETED IN ACCORDANCE WITH ANSI Y14.5M-1994

3RD ANGLE PROJECTION	
----------------------	--

<b>TITLE</b>	JLS 225-400A OUTLINE
--------------	----------------------

<b>Littelfuse</b> CHICAGO, ILLINOIS 60631	REVISION <b>A</b>	DRWG NO. <b>OL-0JLS400</b>	SHEET 1 OF 1
--	----------------------	-------------------------------	--------------