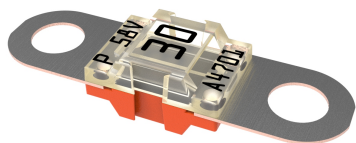
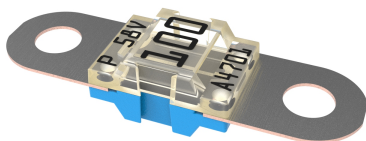


BF1

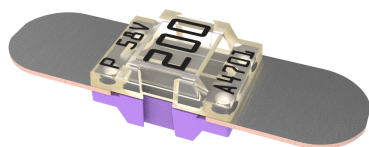
Bolt-down Fuse Rated 58V



2 Holes M6 version



2 Holes M5 version



No-Holes version

Description

BF1 58V fuses use Slo-Blo® technology to protect high-current wiring harnesses. Use the 150 A and 200 A fuses only for short circuit protection.

Specifications

| | |
|---|---|
| Voltage Rating: | 58 VDC |
| Interrupting Rating: | 1000A @58 VDC |
| Recommended Environmental Temperature: | -40°C to +125°C |
| Terminals Material: | Tin plated Copper |
| Opaque Housing Material: | PET-GF33 (U.L. 94 Flammability rating – V0) |
| Clear Housing Material: | PES (U.L. 94 Flammability rating – HB) |
| Mounting Torque M5: | 4.5 Nm +/- 1Nm |
| Mounting Torque M6: | 6.0 Nm +/- 1Nm |
| Complies with: | UL 248 Special Purpose Fuse |
| Refers To: | ISO 8820-5:2015 |

Applications

- Cars
- Trucks
- SUVs
- Offroad vehicles
- Buses
- Watercraft as approved by Littelfuse®

Features & Benefits

- Color coding indicates ampere rating
- High-contrast ampere rating stamps aid identification
- Available with one, two or no mounting holes
- Transparent cover make it easier to see when fuse blow

Ordering Information

| Part Number | Rating | Package Size | Bolt Size | Bolt Hole Qty |
|---------------|----------|--------------|-----------|---------------|
| 142.5631.xxxx | 30 - 200 | 500 | M5 | 2 |
| 142.7010.xxxx | 30 - 200 | 500 | M6 | 2 |
| 142.0020.xxxx | 30 - 200 | 500 | N/A | 0 |

BF1

Bolt-down Fuse Rated 58V

Ratings

| Part Number M5 | Part Number M6 | Current Rating (A) | Housing Material Color | Test Cable Size (mm ²) | Typ. Voltage Drop (mV) | Typ. Cold Resistance (mΩ) | Typ. I ² t (A ² s) |
|----------------------------|----------------------------|--------------------|------------------------|------------------------------------|------------------------|---------------------------|--|
| 142.5631.5302 ¹ | 142.7010.5302 ¹ | 30 | Orange | 2.5 | 105 | 2.70 | 5,100 |
| 142.5631.5402 | 142.7010.5402 | 40 | Green | 4 | 90 | 1.56 | 6,800 |
| 142.5631.5502 | 142.7010.5502 | 50 | Red | 6 | 80 | 1.03 | 6,900 |
| 142.5631.5602 | 142.7010.5602 | 60 | Yellow | 6 | 75 | 0.75 | 16,200 |
| 142.5631.5702 | 142.7010.5702 | 70 | Brown | 10 | 70 | 0.64 | 22,000 |
| 142.5631.5802 | 142.7010.5802 | 80 | White | 10 | 70 | 0.55 | 25,600 |
| 142.5631.6102 | 142.7010.6102 | 100 | Blue | 16 | 70 | 0.44 | 42,500 |
| 142.5631.6122 | 142.7010.6122 | 125 | Pink | 25 | 70 | 0.34 | 62,500 |
| 142.5631.6152 | 142.7010.6152 | 150 | Grey | 25 | 70 | 0.29 | 83,400 |
| 142.5631.6202 ² | 142.7010.6202 | 200 | Purple | 35 | 70 | 0.24 | 126,000 |

Note 1: Not UL rated

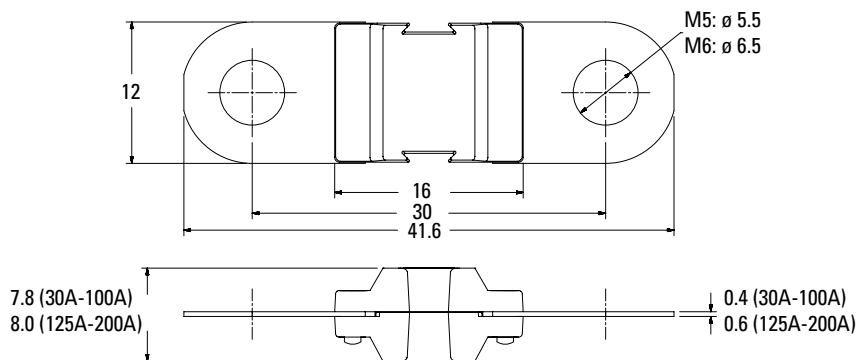
Note 2: Short Circuit Protector only

The typical I²t is an average value calculated from the breaking capacity tests by using the melting time before the arcing occurs.

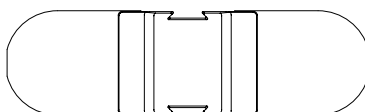
Dimensions

Dimensions in mm for reference only.

See outline drawing for dimensions and tolerances.



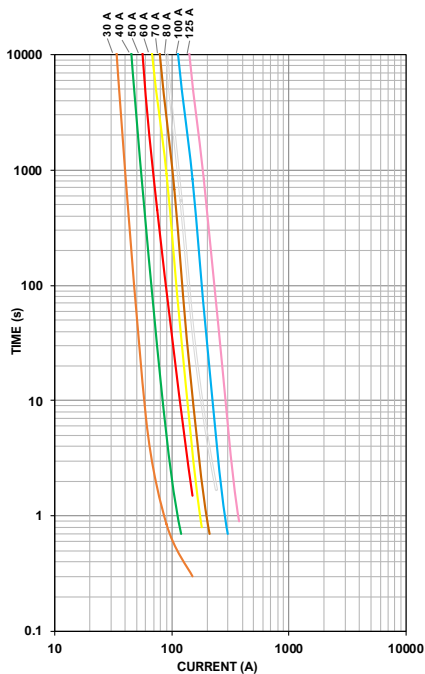
No Holes versions



BF1

Bolt-down Fuse Rated 58V

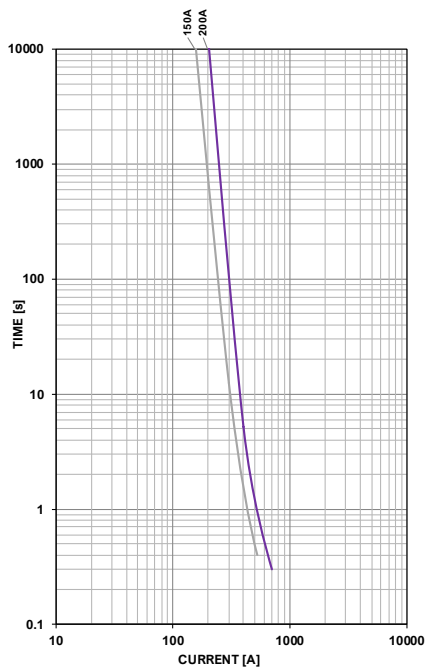
Time-Current Characteristic Curves



Time-Current Characteristics

Time-Current Characteristics

| % of Rating | Opening Time Min / Max (s) | |
|-------------|----------------------------|-------------|
| | 30-125A | 150-200 A |
| 75 | - / - | 360,000 / ∞ |
| 100 | 360,000 / ∞ | - / - |
| 110 | 14,400 / ∞ | - / - |
| 150 | 90 / 3,600 | - / - |
| 200 | 3 / 100 | 1 / 15 |
| 300 | 0.3 / 3 | - / - |
| 350 | - / - | 0.3 / 5 |
| 500 | 0.1 / 1 | - / - |
| 600 | - / - | 0.1 / 1 |



BF1

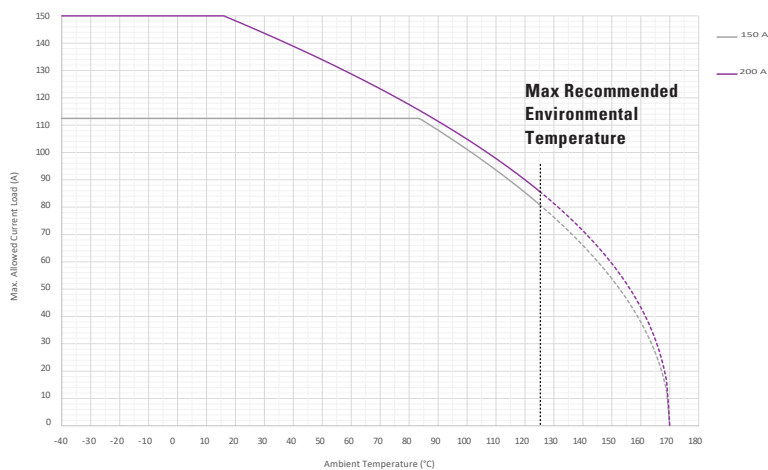
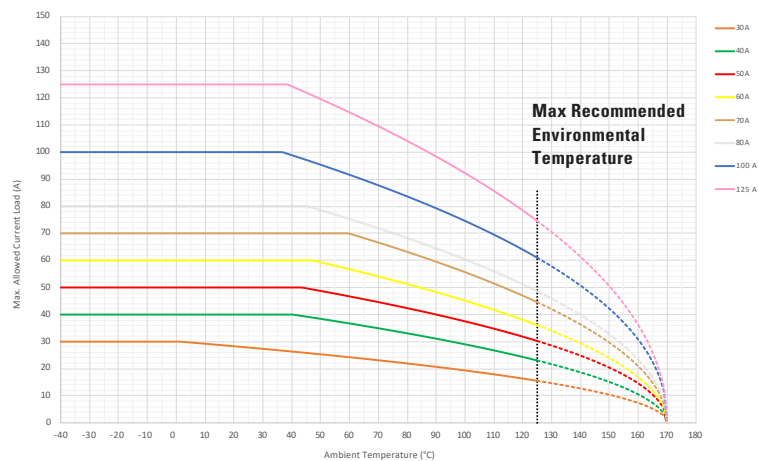
Bolt-down Fuse Rated 58V

Typical Derating of Fuse Melting Element

Temperature Security Margin is 20%

Wire Cross Section And Fixture Test Set Up Refer To ISO 8820-3

Please Contact Littelfuse® For Details Regarding Derating Test Set Up



Temperature Table

| | max. allowed current load (A) at ambient temperature (typical derating) | | | | | | |
|--------------|---|-----|------|------|------|-------|-------|
| | -40°C | 0°C | 20°C | 65°C | 85°C | 110°C | 125°C |
| 30 A | 30 | 30 | 28 | 24 | 21 | 18 | 16 |
| 40 A | 40 | 40 | 40 | 36 | 32 | 27 | 23 |
| 50 A | 50 | 50 | 50 | 46 | 41 | 35 | 30 |
| 60 A | 60 | 60 | 60 | 55 | 50 | 42 | 36 |
| 70 A | 70 | 70 | 70 | 68 | 61 | 51 | 45 |
| 80 A | 80 | 80 | 80 | 74 | 66 | 56 | 49 |
| 100 A | 100 | 100 | 100 | 90 | 81 | 70 | 61 |
| 125 A | 125 | 125 | 125 | 112 | 101 | 86 | 75 |
| 150 A | 113 | 113 | 113 | 113 | 111 | 94 | 81 |
| 200 A | 150 | 150 | 148 | 126 | 115 | 98 | 86 |

Derating curves may change depending on the final condition of the application (terminals characteristics, wire size etc..). Please ask Littelfuse® for more information.