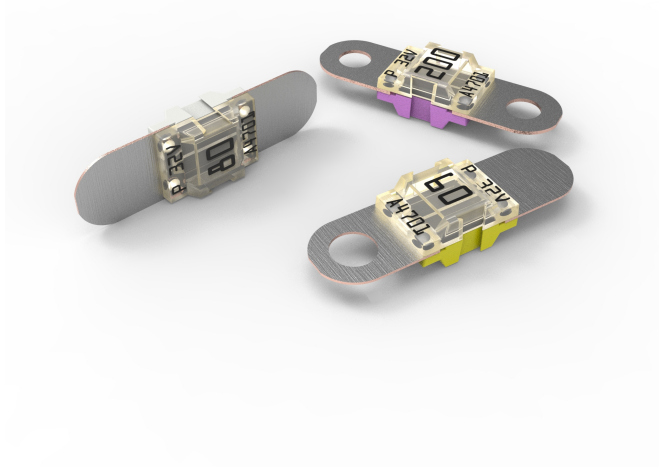


BF1

Bolt-down Fuse Rated 32V



Specifications

Voltage Rating:	32 VDC	
Interrupting Rating:	30A:	1000A @ 32 VDC
	40 A - 150 A:	2000A @ 32 VDC
	200 A:	1500A @ 32 VDC
Recommended Environmental Temperature:	-40°C to +125°C	
Terminals Material:	Tin plated Copper	
Opaque Housing Material:	PET-GF33 (U.L. 94 Flammability rating – V0)	
Clear Housing Material:	PES (U.L. 94 Flammability rating – HB)	
Mounting Torque M5:	4.5 Nm +/- 1Nm	
Mounting Torque M6:	6.0 Nm +/- 1Nm	
Complies with:	UL 248 Special Purpose Fuse	
Refers To:	ISO 8820-5:2015	

Description

BF1 32V fuses use Slo-Blo® technology to protect high-current wiring harnesses. Use the 150 A and 200 A fuses only for short circuit protection.

Applications

- Cars
- Trucks
- SUVs
- Offroad vehicles
- Buses
- Watercraft as approved by Littelfuse®

Features & Benefits

- Color coding indicates ampere rating
- High-contrast ampere rating stamps aid identification
- Available with one, two or no mounting holes
- Transparent cover make it easier to see when fuse blow








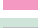
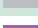

Ordering Information

Part Number	Ratings	Package Size	Bolt Size	Bolt Hole Qty
153.5631.xxx2	30A-200A	1000	M5	2
153.5631.xxx1	30A-200A	10	M5	2
153.7010.xxx2	30A-150A	1000	M6	2
153.7000.xxx2	150-200A	500	M6	2
153.0010.xxx2	60A-125A	1000	M6	1
153.0020.xxx2	30A-200A	500	--	0

BF1

Bolt-down Fuse Rated 32V

Ratings

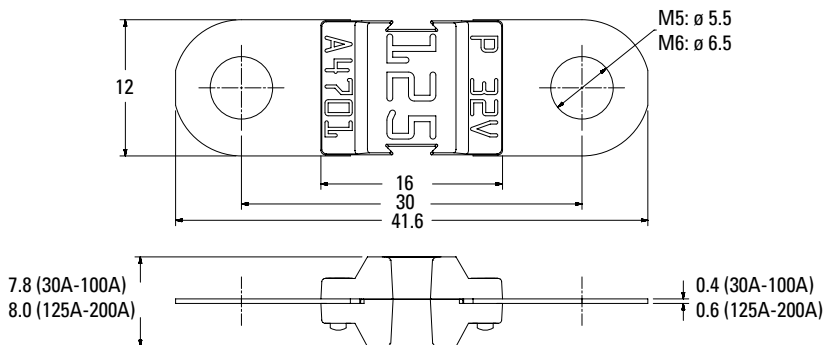
Part Number	Current Rating (A)	Housing Material Color	Test Cable Size (mm ²)	Typ. Voltage Drop (mV)	Typ. Cold Resistance (mΩ)	Typ. I ² t (A ² s)
153.xxxx.530_	30		2.5	105	2.70	5 100
153.xxxx.540_	40		4	90	1.56	6 800
153.xxxx.550_	50		6	80	1.03	6 900
153.xxxx.560_	60		6	75	0.75	16 200
153.xxxx.570_	70		10	70	0.64	22 000
153.xxxx.580_	80		10	70	0.55	25 600
153.xxxx.610_	100		16	70	0.44	42 500
153.xxxx.612_	125		25	70	0.34	62 500
153.xxxx.615_ ¹	150		25	70	0.29	83 400
153.xxxx.620_ ³	200		35	70	0.24	126 000

Note 1: Short Circuit Protector only

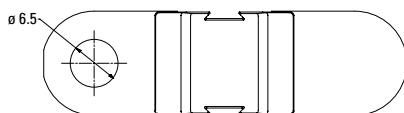
The typical I²t is an average value calculated from the breaking capacity tests by using the melting time before the arcing occurs.

Dimensions

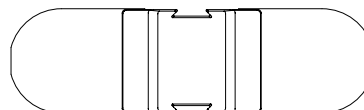
Dimensions in mm for reference only.
See outline drawing for dimensions and tolerances.



1 Hole M6 version



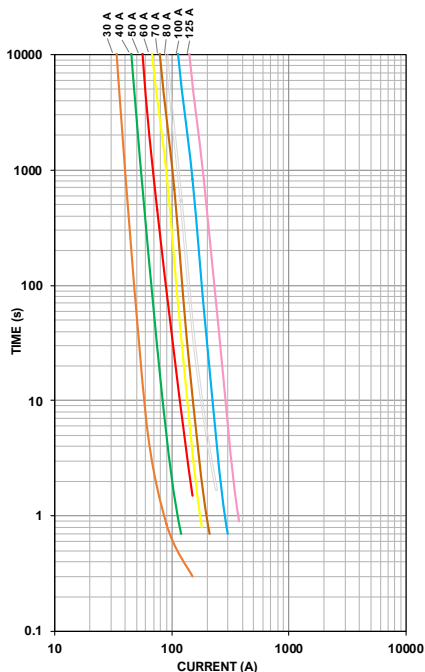
No Holes versions



BF1

Bolt-down Fuse Rated 32V

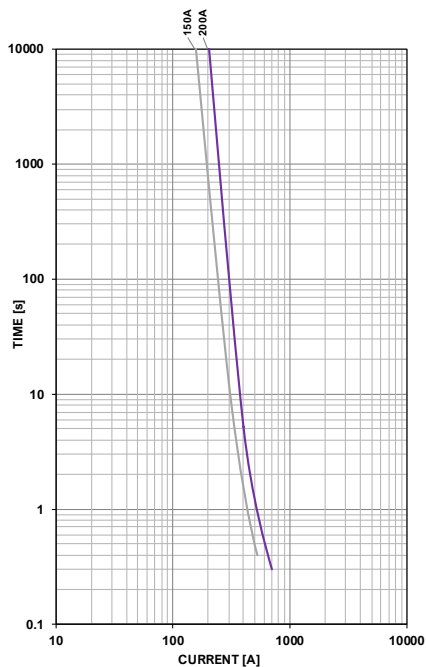
Time-Current Characteristic Curves



Time-Current Characteristics

Time-Current Characteristics

% of Rating	Opening Time Min / Max (s)	
	30-125A	150-200 A
75	- / -	360,000 / ∞
100	360,000 / ∞	- / -
110	14,400 / ∞	- / -
150	90 / 3,600	- / -
200	3 / 100	1 / 15
300	0.3 / 3	- / -
350	- / -	0.3 / 5
500	0.1 / 1	- / -
600	- / -	0.1 / 1



BF1

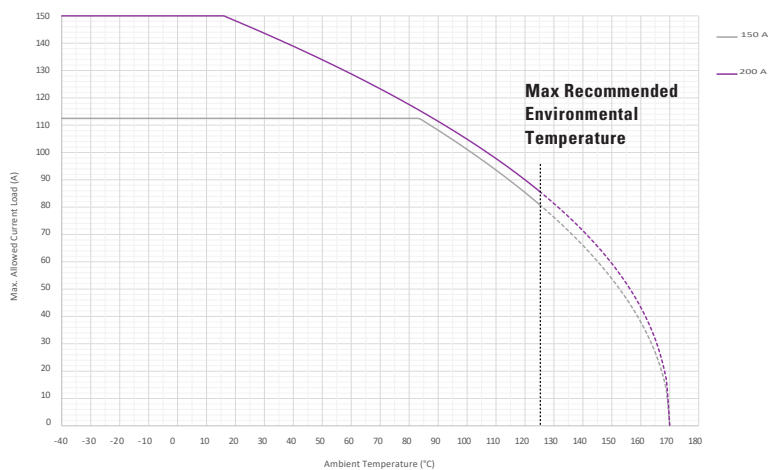
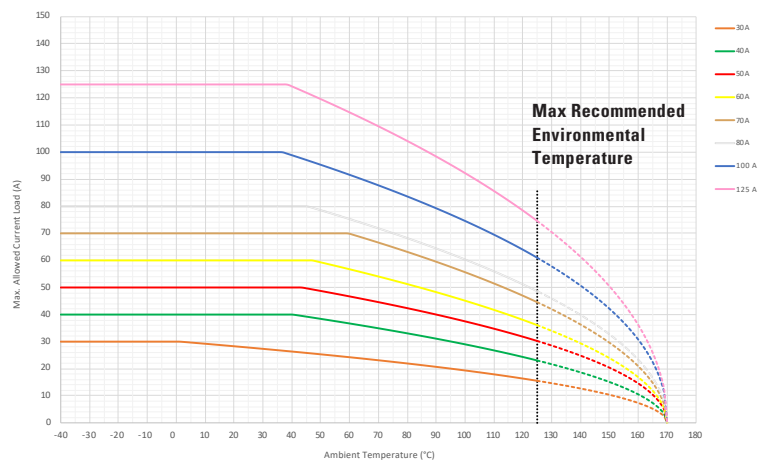
Bolt-down Fuse Rated 32V

Typical Derating of Fuse Melting Element

Temperature Security Margin is 20%

Wire Cross Section And Fixture Test Set Up Refer To ISO 8820-3

Please Contact Littelfuse® For Details Regarding Derating Test Set Up



Temperature Table

	max. allowed current load (A) at ambient temperature (typical derating)						
	-40°C	0°C	20°C	65°C	85°C	110°C	125°C
30 A	30	30	28	24	21	18	16
40 A	40	40	40	36	32	27	23
50 A	50	50	50	46	41	35	30
60 A	60	60	60	55	50	42	36
70 A	70	70	70	68	61	51	45
80 A	80	80	80	74	66	56	49
100 A	100	100	100	90	81	70	61
125 A	125	125	125	112	101	86	75
150 A	113	113	113	113	111	94	81
200 A	150	150	148	126	115	98	86

Derating curves may change depending on the final condition of the application (terminals characteristics, wire size etc..). Please ask Littelfuse® for more information.