

XPT IGBT

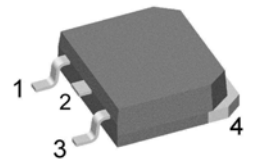
preliminary

$$V_{CES} = 1200V$$

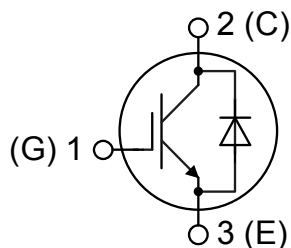
$$I_{C25} = 9A$$

$$V_{CE(sat)} = 1.8V$$

Copack

Part number
IXA4IF1200TC


Backside: collector


Features / Advantages:

- Easy paralleling due to the positive temperature coefficient of the on-state voltage
- Rugged XPT design (Xtreme light Punch Through) results in:
 - short circuit rated for 10 μ sec.
 - very low gate charge
 - low EMI
 - square RBSOA @ 3x Ic
- Thin wafer technology combined with the XPT design results in a competitive low VCE(sat)
- SONIC™ diode
 - fast and soft reverse recovery
 - low operating forward voltage

Applications:

- AC motor drives
- Solar inverter
- Medical equipment
- Uninterruptible power supply
- Air-conditioning systems
- Welding equipment
- Switched-mode and resonant-mode power supplies
- Inductive heating, cookers
- Pumps, Fans

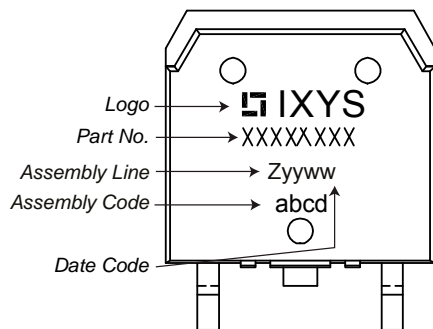
Package: TO-268AA (D3Pak)

- Industry standard outline
- RoHS compliant
- Epoxy meets UL 94V-0

IGBT				Ratings			
Symbol	Definition	Conditions	min.	typ.	max.	Unit	
V_{CES}	collector emitter voltage	$T_{VJ} = 25^{\circ}\text{C}$			1200	V	
V_{GES}	max. DC gate voltage				± 20	V	
V_{GEM}	max. transient gate emitter voltage				± 30	V	
I_{C25}	collector current	$T_C = 25^{\circ}\text{C}$			9	A	
I_{C100}		$T_C = 100^{\circ}\text{C}$			5	A	
P_{tot}	total power dissipation	$T_C = 25^{\circ}\text{C}$			45	W	
$V_{CE(sat)}$	collector emitter saturation voltage	$I_C = 3\text{A}; V_{GE} = 15\text{V}$		1.8	2.1	V	
				2.1		V	
$V_{GE(th)}$	gate emitter threshold voltage	$I_C = 0.1\text{mA}; V_{GE} = V_{CE}$	5.4	5.9	6.5	V	
I_{CES}	collector emitter leakage current	$V_{CE} = V_{CES}; V_{GE} = 0\text{V}$			0.1	mA	
				0.1		mA	
I_{GES}	gate emitter leakage current	$V_{GE} = \pm 20\text{V}$			500	nA	
$Q_{G(on)}$	total gate charge	$V_{CE} = 600\text{V}; V_{GE} = 15\text{V}; I_C = 3\text{A}$		12		nC	
$t_{d(on)}$	turn-on delay time	inductive load $V_{CE} = 600\text{V}; I_C = 3\text{A}$ $V_{GE} = \pm 15\text{V}; R_G = 330\Omega$		70		ns	
t_r	current rise time		$T_{VJ} = 125^{\circ}\text{C}$	40		ns	
$t_{d(off)}$	turn-off delay time		250			ns	
t_f	current fall time		100			ns	
E_{on}	turn-on energy per pulse		0.4			mJ	
E_{off}	turn-off energy per pulse		0.3			mJ	
RBSOA	reverse bias safe operating area	$V_{GE} = \pm 15\text{V}; R_G = 330\Omega$					
I_{CM}		$V_{CEmax} = 1200\text{V}$			9	A	
SCSOA	short circuit safe operating area	$V_{CEmax} = 900\text{V}$					
t_{sc}	short circuit duration	$V_{CE} = 900\text{V}; V_{GE} = \pm 15\text{V}$			10	μs	
I_{sc}	short circuit current	$R_G = 330\Omega; \text{non-repetitive}$		12		A	
R_{thJC}	thermal resistance junction to case				2.7	K/W	
R_{thCH}	thermal resistance case to heatsink			0.15		K/W	
Diode							
V_{RRM}	max. repetitive reverse voltage	$T_{VJ} = 25^{\circ}\text{C}$			1200	V	
I_{F25}	forward current	$T_C = 25^{\circ}\text{C}$			10	A	
I_{F100}		$T_C = 100^{\circ}\text{C}$			6	A	
V_F	forward voltage	$I_F = 3\text{A}$			2.20	V	
				1.90		V	
I_R	reverse current	$V_R = V_{RRM}$			*	mA	
	* not applicable, see Ices value above				*	mA	
Q_{rr}	reverse recovery charge	$V_R = 600\text{V}$ $-di_F/dt = -150\text{A}/\mu\text{s}$ $I_F = 3\text{A}; V_{GE} = 0\text{V}$		0.5		μC	
I_{RM}	max. reverse recovery current		$T_{VJ} = 125^{\circ}\text{C}$	5		A	
t_{rr}	reverse recovery time		350			ns	
E_{rec}	reverse recovery energy		0.1			mJ	
R_{thJC}	thermal resistance junction to case				3	K/W	
R_{thCH}	thermal resistance case to heatsink			0.15		K/W	

preliminary

Package TO-268AA (D3Pak)			Ratings			
Symbol	Definition	Conditions	min.	typ.	max.	Unit
I_{RMS}	RMS current	per terminal			70	A
T_{VJ}	virtual junction temperature		-40		150	°C
T_{op}	operation temperature		-40		125	°C
T_{stg}	storage temperature		-40		150	°C
Weight				5		g
F_c	mounting force with clip		20		120	N

Product Marking

Part number

I = IGBT
 X = XPT IGBT
 A = Gen 1 / std
 4 = Current Rating [A]
 IF = Copack
 1200 = Reverse Voltage [V]
 TC = TO-268AA (D3Pak) (2)

Ordering	Part Number	Marking on Product	Delivery Mode	Quantity	Code No.
Standard	IXA4IF1200TC	IXA4IF1200TC	Tube	30	510224

Similar Part	Package	Voltage class
IXA4IF1200UC	TO-252AA (DPak)	1200

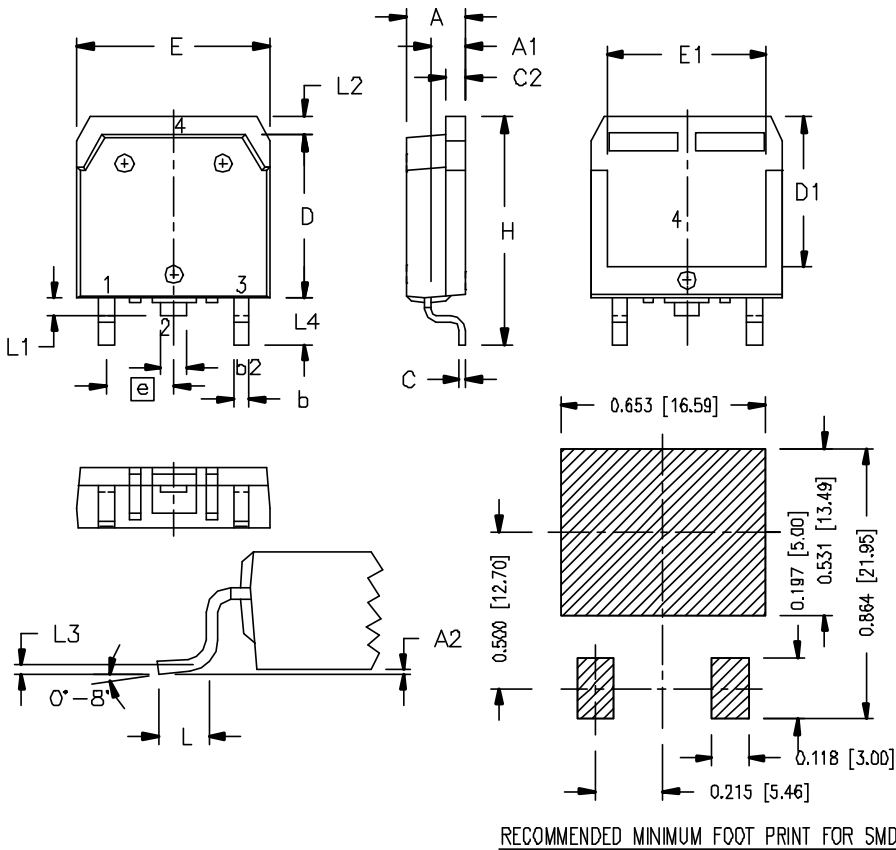
Equivalent Circuits for Simulation

* on die level

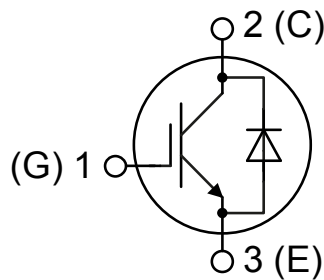
 $T_{VJ} = 150\text{ }^{\circ}\text{C}$


	IGBT	Diode	
$V_{0\max}$	1.1	1.25	V
$R_{0\max}$	460	280	mΩ

Outlines TO-268AA (D3Pak)



Dim.	Millimeter		Inches	
	min	max	min	max
A	4.90	5.10	0.193	0.201
A1	2.70	2.90	0.106	0.114
A2	0.02	0.25	0.001	0.100
b	1.15	1.45	0.045	0.057
b2	1.90	2.10	0.075	0.083
C	0.40	0.65	0.016	0.026
C2	1.45	1.60	0.057	0.063
D	13.80	14.00	0.543	0.551
D1	12.40	12.70	0.488	0.500
E	15.85	16.05	0.624	0.632
E1	13.30	13.60	0.524	0.535
e	5.45 BSC		0.215 BSC	
H	18.70	19.10	0.736	0.752
L	2.40	2.70	0.094	0.106
L1	1.20	1.40	0.047	0.055
L2	1.00	1.15	0.039	0.045
L3	0.25 BSC		0.100 BSC	
L4	3.80	4.10	0.150	0.161





Disclaimer Notice - Information furnished is believed to be accurate and reliable. However, users should independently evaluate the suitability of and test each product selected for their own applications. Littelfuse products are not designed for, and may not be used in, all applications. Read complete Disclaimer Notice at www.littelfuse.com/disclaimer-electronics.