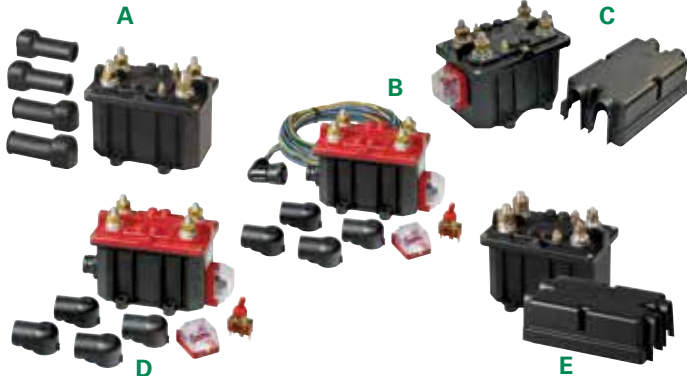


08097300 & 08098160 BATTERY DISCONNECT SWITCHES

250A • DPST • IP65 • M10/M12 Studs • Dual pole bistable current isolating switches



Description

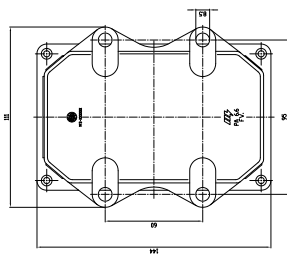
The dual pole remote control current isolating switches described in this section are different in shape and working principle. Remote control current isolating switches are encased in a plastic housing, and are turned on or off with the ignition key or a remote control; with a minimum absorption of current.

In this category we also find a range of models where unlike as in traditional current isolating switches the coil is fed separately and disconnects either the negative or the positive pole.

Features/Benefits

- 250A continuous current rating
- Waterproof IP65

Mounting Diagram



Specifications

Max Operating Voltage:	12V DC 24V DC
Max Continuous Current:	250A
Intermittent Current:	2500A at 3 sec
Operating Temp:	-40 °C to +85 °C
Ingress Protection:	IP65
Contacts:	Tin-plated Brass
Terminals:	M8 - M10 - M12 (brass)

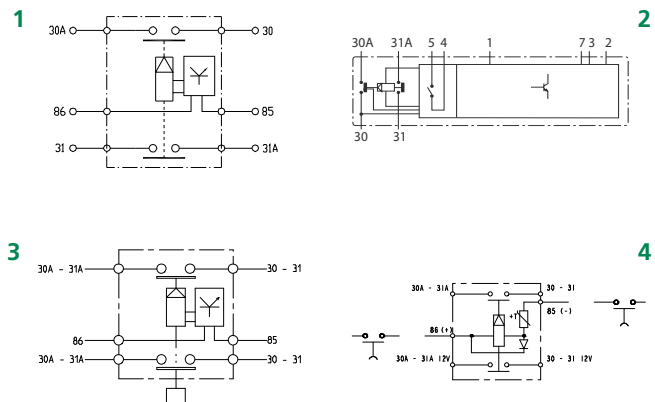
Applications

- Heavy trucks
- Buses
- Construction
- Commercial vehicles
- Agricultural
- Marine

Web Resources

Download technical resources at:
littelfuse.com/ManualBatterySwitches

Electrical Diagram



Ordering Information

PART NUMBER	VOLTAGE	AMPERAGE	CIRCUITRY	MOUNTING	INGRESS	TERMINAL NUTS	IMAGE	DIAGRAM	NOTES
08097300	12V DC	250A	DPST	Bolt-Down	IP65	M10 Tin-plated brass	A	1	cover
08097400	24V DC	250A	DPST	Bolt-Down	IP65	M10 Tin-plated brass	A	1	cover
08097362	12V DC	250A	DPST	Bolt-Down	IP65	M10 Tin-plated brass	B	2	8 pins plug
08097462	24V DC	250A	DPST	Bolt-Down	IP65	M10 Tin-plated brass	B	2	8 pins plug
08097368	12V DC	250A	DPST	Bolt-Down	IP65	M10 Tin-plated brass	C	3	cover
08097468	24V DC	250A	DPST	Bolt-Down	IP65	M10 Tin-plated brass	C	3	cover
08097461	24V DC	250A	DPST	Bolt-Down	IP65	M10 Tin-plated brass	D	2	8 pins plug
08098160	24V DC	250A	DPST	Bolt-Down	IP65	M8-M12 Tin-plated brass	E	4	12V and 24V circuit