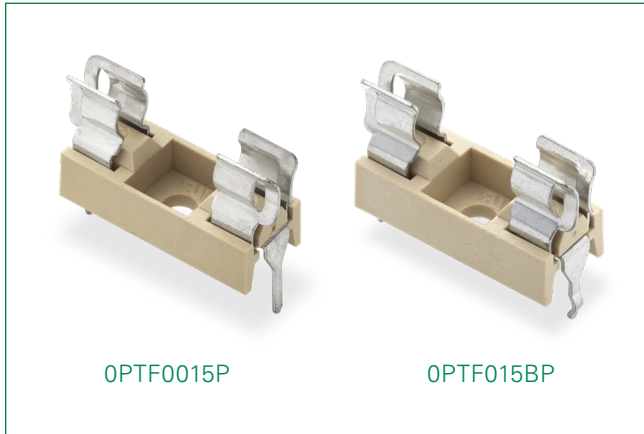


# PTF015 Series

## Circuit Board Mountable



PTF0015P

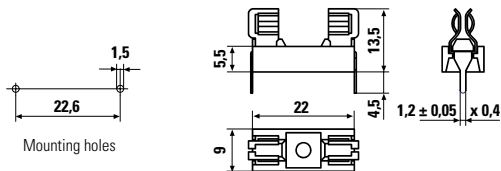
PTF015BP

### Agency Approvals

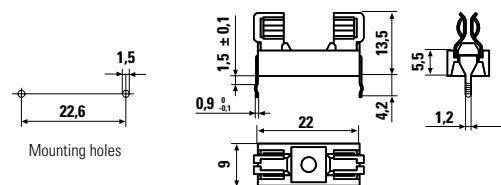
Agency	Agency File Number
	E14721

### Product Dimensions (mm)

PTF0015P



PTF015BP



### Product Characteristics

OPTF0015P / OPTF015BP	
<b>Compatible Fuses</b>	5x20 mm
<b>Electrical Specifications</b>	Rated Voltage: 250 V
	Rated Current: 6.3 A
	Rated Power: 1.6 W
<b>Materials</b>	Molded Holder (Yellow) and Cover: PPOM - (UL94 V-1)
	PCB Terminals: Tin plated brass
<b>Protection Class &amp; Category</b>	PC1 (IEC 60127-6)
<b>Contact Resistance</b>	≤ 5 mΩ
<b>Degree of Protection</b>	IP 00
<b>Ambient Temperature</b>	-30 °C to 120 °C
<b>Solder Pot Temperature</b>	260 °C
<b>Solder Dwell Time</b>	10 seconds

### Features & Benefits

- RoHS compliant and Lead-free
- Available in a version that maintains fuseholder position during soldering process\*
- Tin-plated leads for easy soldering process
- UL Recognized to UL 4248-1
- Low profile design for printed circuit board mountable terminals for Pb-free wave soldering process

### Ordering Information

Ordering PN	Description	Packaging
OPTF0015P	Horizontal Mount	1000 pieces, bulk pack
OPTF015BP	Horizontal Mount	1000 pieces, bulk pack

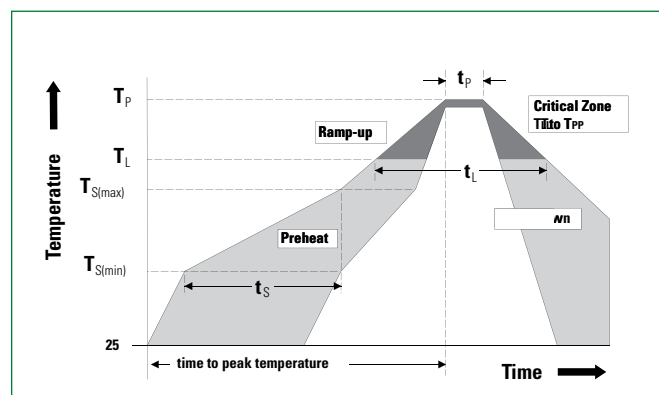
**Note:** Panel minimum 0,8 mm and maximum 4,5 mm

### Soldering Parameters–Wave Soldering

Ordering PN	Description
Preheat: (Depends on Flex Activation Temperature)	(Typical Industry Recommendation)
Temperature Minimum	100° C
Temperature Maximum	150° C
Preheat Time	60–180 seconds
Solder Pot Temperature	260° C Maximum
Solder Dwell Time	2–5 seconds

#### Recommended Hand-Solder Parameters:

Solder Iron Temperature: 350° C +/- 5° C  
Heating Time: 5 seconds max.



**Disclaimer Notice** - Information furnished is believed to be accurate and reliable. However, users should independently evaluate the suitability of and test each product selected for their own applications. Littelfuse products are not designed for, and may not be used in, all applications. Read complete Disclaimer Notice at <http://www.littelfuse.com/disclaimer-electronics>.