

### Specification Status: Released

**Marking:**
**XX 60 R 05 HB**
**Week of Manufacture**

lot number system :

E.g. H = Second half of 2004; B = week 2

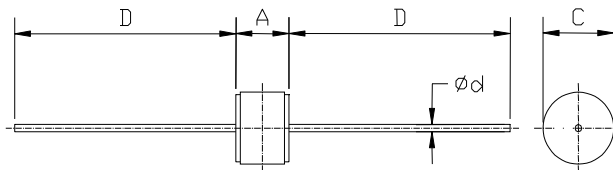
**Surge Rating:**

05: 5kA

**Product Family**
**Voltage Designator**

60 : 600 V

Manufacturer's Mark


**TABLE I. DIMENSIONS**

	A		C		D		Ød
	MIN	MAX	MIN	MAX	MIN	MAX	NOM
mm:	5.8	6.2	7.8	8.2	26.0	30.0	0.8
in*:	(0.228)	(0.244)	(0.307)	(0.323)	(1.024)	(1.181)	(0.031)

\*Rounded off approximation

**TABLE II. Electrical Characteristics**

	DC Sparkover Voltage (A-E) (B-E)	Impulse Sparkover Voltage (A-E) (B-E)	Insulation Resistance	Capacitance	Impulse Life	Impulse Discharge Current 8/20 µs (A+B-E)	Impulse Discharge Current 8/20 µs (A+B-E)	AC Discharge Current, 50 Hz (A+B-E)
Part Number	@ 100V/s	@1kV / µs	@100 V <sub>DC</sub>	@ 1MHz	10/1000µs 300 times	Single Impulse	Repeat 10 times (5 times, each polarity)	Repeat 5 times 1s
GTCA28-601M-R05	600V ± 20%	< 1,100V	≥ 10,000MΩ	<1.0pF	100A	10kA	5kA	5A

**General Characteristics**

No Radioactive Materials

Storage temperature: -40°C ... +90°C

Operating temperature: -40°C ... +90°C

Body: Nickel Plated

Agency Recognitions:

Precedence:

Effectivity:

CAUTION:

UL Recognized

This specification takes precedence over documents referenced herein.

Reference documents shall be the issue in effect on the date of invitation for bid.

Operation beyond the rated voltage or current may result in rupture, electrical arcing or flame.

**Materials Information**
**ROHS Compliant**
**ELV Compliant**

 Directive 2002/95/EC  
Compliant

 Directive 2000/53/EC  
Compliant



Expertise Applied | Answers Delivered

## Gas Discharge Tube

Overvoltage Protection Device

**PRODUCT: GTCA28-601M-R05**

DOCUMENT: SCD26698

REV LETTER: D

REV DATE: JULY 26, 2016

PAGE NO.: 2 OF 2

Littelfuse products are not designed for, and shall not be used for, any purpose (including, without limitation, automotive, military, aerospace, medical, life-saving, life-sustaining, nuclear facility applications, devices intended for surgical implant into the body, or any other application in which the failure or lack of desired operation of the product may result in personal injury, death, or property damage) other than those expressly set forth in applicable Littelfuse product documentation. Warranties granted by Littelfuse shall be deemed void for products used for any purpose not expressly set forth in applicable Littelfuse documentation. Littelfuse shall not be liable for any claims or damages arising out of products used in applications not expressly intended by Littelfuse as set forth in applicable Littelfuse documentation. The sale and use of Littelfuse products is subject to Littelfuse Terms and Conditions of Sale, unless otherwise agreed by Littelfuse.