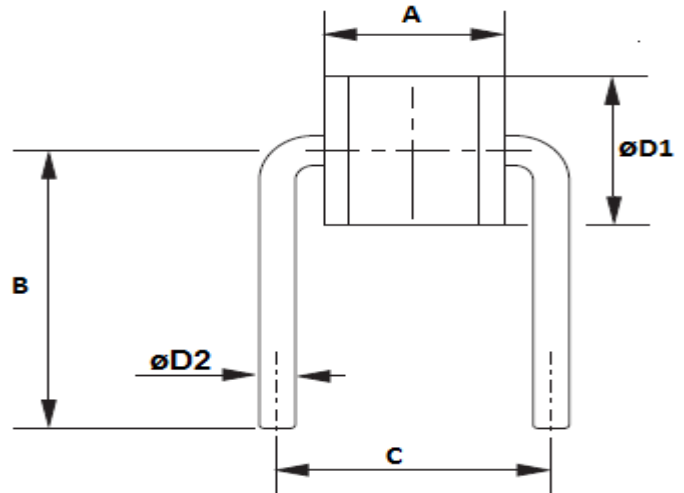
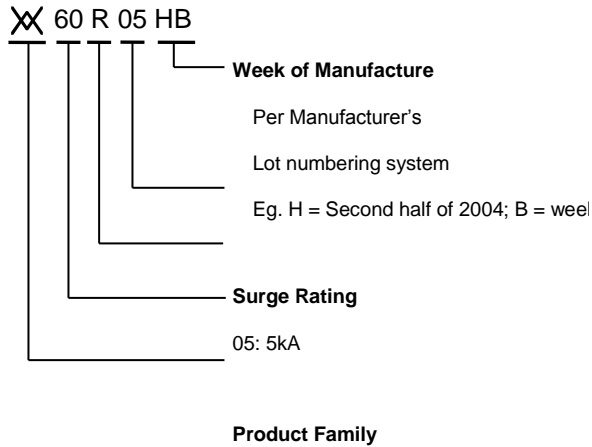


**Specification Status: Released**

**Marking:**



**TABLE I. DIMENSIONS**

	A		B	C		D1		D2
	MIN	MAX	NOM	MIN	MAX	MIN	MAX	NOM
mm	4.8	5.2	10	7.3	7.9	4.8	5.2	0.8
in*	(0.19)	(0.20)	(0.39)	(0.29)	(0.31)	(0.19)	(0.20)	(0.032)

\*Rounded off approximation

**TABLE II. ELECTRICAL CHARACTERISTICS**

DC Sparkover Voltage*	Impulse Sparkover Voltage		Insulation Resistance	Capacitance	AC Discharge Current, 50 Hz	Impulse Discharge Current 10/1000 $\mu$ s	Impulse Discharge Current, 8/20 $\mu$ s
@ 100V/s	@100V/ $\mu$ s	@10 00V/ $\mu$ s	@100V <sub>DC</sub>	@1MHz	Multiple Hits (1s duration: 10 hits)	300 hits (150hits for each polarity)	10 hits (5hits for each polarity)
600V $\pm$ 15%	$\leq$ 950V	$\leq$ 110 0V	$\geq$ 10,000M $\Omega$	<1.0pF	5Arms	100A	5kA

\*In ionized mode

Testing methods and specifications referring to ITU-T K.12



Expertise Applied | Answers Delivered

# Gas Discharge Tube

## Over-Voltage Protection Device

**PRODUCT: GTCR25-601L-R05**

DOCUMENT: SCD28917  
REV LETTER: A  
REV DATE: JULY 26, 2016  
PAGE NO.: 2 OF 2

### General Characteristics:

No Radioactive Materials

Storage temperature: -40°C ... +90°C

Operating temperature: -40°C ... +90°C

Electrode: Ni Plating

Lead Material: Tin Plated

Agency Recognitions:

UL Recognized

Precedence:

This specification takes precedence over documents referenced herein

Effectivity:

Reference documents shall be the issue in effect on the date of invitation for bid

CAUTION:

Operation beyond the rated voltage or current may result in rupture, electrical arcing or flame

### Materials Information

**ROHS Compliant**

**ELV Compliant**

**Ph-Free**

Directive 2002/95/EC  
Compliant

Directive 2000/53/EC  
Compliant



Littelfuse products are not designed for, and shall not be used for, any purpose (including, without limitation, automotive, military, aerospace, medical, life-saving, life-sustaining or nuclear facility applications, devices intended for surgical implant into the body, or any other application in which the failure or lack of desired operation of the product may result in personal injury, death, or property damage) other than those expressly set forth in applicable Littelfuse product documentation. Warranties granted by Littelfuse shall be deemed void for products used for any purpose not expressly set forth in applicable Littelfuse documentation. Littelfuse shall not be liable for any claims or damages arising out of products used in applications not expressly intended by Littelfuse as set forth in applicable Littelfuse documentation. The sale and use of Littelfuse products is subject to Littelfuse Terms and Conditions of Sale, unless otherwise agreed by Littelfuse