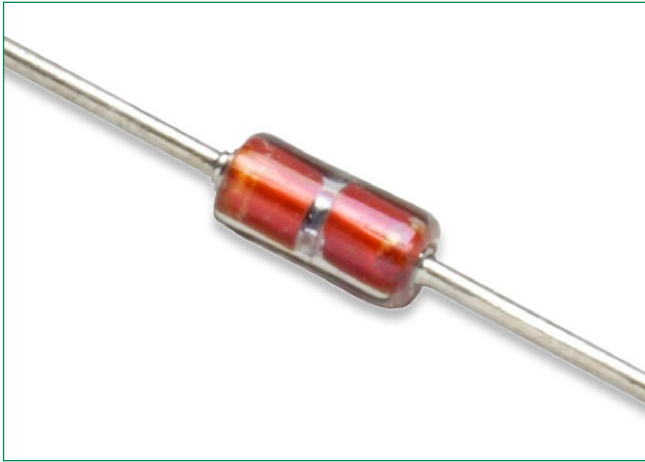


## DO-34 Standard Series Glass Encapsulated Thermistors



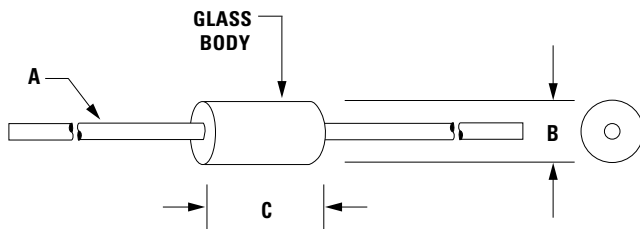
### Description

Littelfuse low cost glass encapsulated thermistors are manufactured using super stable NTC chips which are hermetically sealed in a glass (DO-34 diode style) package. The result is a device which exhibits excellent long-term reliability and stability even when subjected to severe environmental or thermal conditions. Their uniform dimensions and axial lead configuration make them especially suitable for use with automatic insertion equipment.

### Options

- Non-standard resistance values and tolerances
- Point matched at specified temperatures

### Dimensions



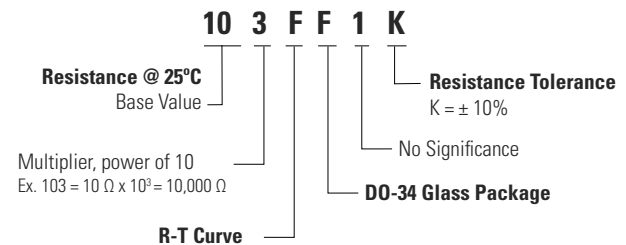
Dimensions shown in inches.

A	B	C
0.0157" ± 0.0025" Dia 22 AWG Tinned CCS 1.0" Long Min	0.065" Max	0.110" Max

### Features

- High temperature capability to +300°C
- Hermetically sealed glass package
- Low cost
- Excellent long-term stability
- High Voltage Insulation
- Tinned CCS Lead Wires are Solderable or Weldable

### Part Numbering System



**Note:** Not all combinations of Part Number codes are available. Contact Littelfuse for details.

### DO-34 Standard Series Glass Encapsulated Thermistors

#### Specifications

Part Number	Resistance Ohms @25°C	*Resistance Tol. ± % @ 25°C	R-T Curve	Temperature Coefficient (%/°C) @ 25°C	Beta (K) 0-50°C	Dissipation Constant, Nominal (mW/°C)	Thermal Time Constant, Max. - Still Air (seconds)	Thermal Time Constant, Max. - Well Stirred Oil (seconds)	Temperature Rating (°C)
202FF1K	2,000	10	F	-3.86	3419	2	5	0.5	-55 to +300
103FF1K	10,000	10	F	-3.86	3419	2	5	0.5	-55 to +300
103JF1K	10,000	10	J	-4.4	3892	2	5	0.5	-55 to +300
123JF1K	12,000	10	J	-4.4	3892	2	5	0.5	-55 to +300
683N1F1K	68,000	10	N1	-4.5	3991	2	5	0.5	-55 to +300
104JF1K	100,000	10	J	-4.4	3892	2	5	0.5	-55 to +300
334RF1K	330,000	10	R	-4.68	4140	2	5	0.5	-55 to +300

\*Resistance tolerances of ± 1%, 2%, and 5% are available upon request