

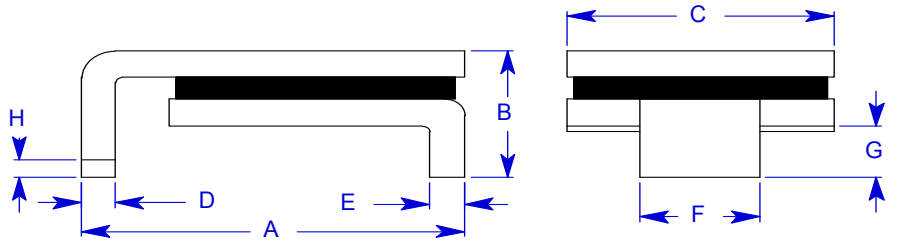
**Specification Status: Released**

**Maximum Electrical Rating**

**Operating Voltage: 16V<sub>DC</sub>**  
**Interrupt Current: 40A**

**Marking:**

- 185A** - Part Identification
- Manufacturer's Mark**
- Lot Identification



**Notes:**

1. All metal surfaces are tin plated.
2. Devices cannot be wave soldered.
3. Drawing not to scale.

**TABLE I. DIMENSIONS:**

|      | A       |         | B   |         | C       |         | D       |         | E       |         | F       |         | G       |         | H       |
|------|---------|---------|-----|---------|---------|---------|---------|---------|---------|---------|---------|---------|---------|---------|---------|
|      | MIN     | MAX     | MIN | MAX     | MIN     | MAX     | MIN     | MAX     | MIN     | MAX     | MIN     | MAX     | MIN     | MAX     | MIN     |
| mm:  | 8.0     | 9.4     | --  | 3.0     | 5.99    | 6.71    | 0.56    | 0.71    | 0.56    | 0.71    | 3.68    | 3.94    | 0.66    | 1.37    | 0.43    |
| in*: | (0.315) | (0.370) | --  | (0.118) | (0.236) | (0.264) | (0.022) | (0.028) | (0.022) | (0.028) | (0.145) | (0.155) | (0.026) | (0.054) | (0.017) |

**TABLE II. PERFORMANCE RATINGS:**

| CURRENT RATINGS** |      |              |      |              |      | TIME TO TRIP**             | RESISTANCE VALUES |       | TRIPPED-STATE POWER DISSIPATION** |
|-------------------|------|--------------|------|--------------|------|----------------------------|-------------------|-------|-----------------------------------|
| AMPS AT 0°C       |      | AMPS AT 25°C |      | AMPS AT 60°C |      | SECONDS AT 25°C, 9.25A MAX | OHMS AT 25°C      |       | WATTS AT 25°C                     |
| HOLD              | TRIP | HOLD         | TRIP | HOLD         | TRIP |                            | MIN               | MAX*  | MAX                               |
| 2.30              | 4.60 | 1.85         | 3.70 | 1.30         | 2.60 | 11.3                       | 0.032             | 0.126 | 1.5                               |

\* Maximum resistance is measured 1 hour after reflow.

\*\* Values were determined using PCB's with 100 mil X 2 ounce copper traces.

Reference Documents: PS300, PS400

Precedence: This specification takes precedence over documents referenced herein.

Effectivity: Reference documents shall be the issue in effect on the date of invitation for bid.

CAUTION: Operation beyond the rated voltage or current may result in rupture, electrical arcing or flame.

**Materials Information**

**ROHS Compliant**



**ELV Compliant**



**Pb-Free**



**Halogen Free\***



\* Halogen Free refers to: Br≤900ppm, Cl≤900ppm, Br+Cl≤1500ppm.

**PolySwitch®**  
**PTC Devices**  
Overcurrent Protection Device

**PRODUCT: ASMD185F**

DOCUMENT: SCD27574  
REV LETTER: B  
REV DATE: JULY 26, 2016  
PAGE NO.: 2 OF 2

Information furnished is believed to be accurate and reliable. However, users should independently evaluate the suitability of and test each product selected for their own applications. Littelfuse products are not designed for, and shall not be used for, any purpose (including, without limitation, military, aerospace, medical, lifesaving, life-sustaining or nuclear facility applications, devices intended for surgical implant into the body, or any other application in which the failure or lack of desired operation of the product may result in personal injury, death, or property damage) other than those expressly set forth in applicable Littelfuse product documentation. Warranties granted by Littelfuse shall be deemed void for products used for any purpose not expressly set forth in applicable Littelfuse documentation. Littelfuse shall not be liable for any claims or damages arising out of products used in applications not expressly intended by Littelfuse as set forth in applicable Littelfuse documentation. The sale and use of Littelfuse products is subject to Littelfuse Terms and Conditions of Sale, unless otherwise agreed by Littelfuse.