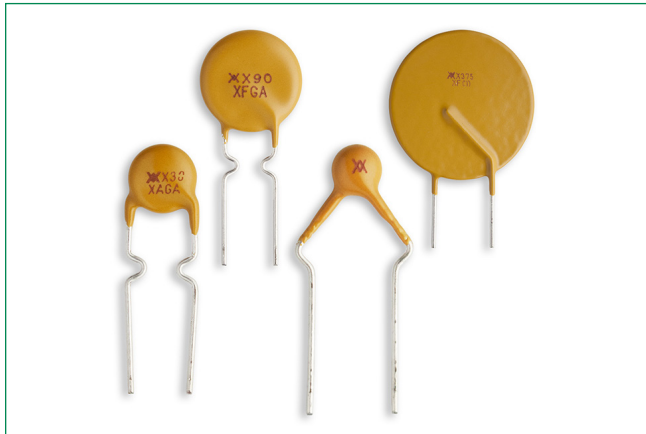


RXEF Series

Radial Leaded



Description

Littelfuse PolySwitch radial-leaded devices represent the most comprehensive and complete set of PPTC products available in the industry today. RXEF series offers low hold currents (down to 50mA) and high voltage rating (up to 72V).

Features & Benefits

- Resettable and single-use overcurrent devices
- Wide range of form factor and termination methods
- Devices compatible with high-volume electronics assembly
- RoHS compliant, Lead-Free and Halogen-Free
- UL Recognized to UL 1434
- CSA Approved to CSA TIL No. CA-3A
- TUV Approved to EN 60730-1
- CQC Approved to GB 8898, GB/T 7153, GB 14536.1

Applications

- Satellite video receivers
- Industrial controls
- Transformers
- Computer motherboards
- Modems
- USB hubs, ports and peripherals
- IEEE 1394 ports
- CD-ROMs
- Game machines
- Battery packs
- Phones
- Fax machines
- Analog and digital line cards
- Printers

Additional Information



Resources



Accessories



Samples

Agency Approvals

| Agency | Agency File/Certificate Number |
|--------|--------------------------------|
| | E74889 |
| | 78165 |
| | 16001159722 |
| | 72161785 |

Electrical Characteristics

| Part Number | Ordering Part Number | I_H | I_T | V_{MAX} | | I_{MAX} | | $P_{D\ TYP}$ | Max Time-to-trip | | R_{MIN} | R_{MAX} | R_{1MAX} | Lead Size (mm ² /AWG) |
|-------------------|----------------------|-------|-------|--------------------|------------------------|----------------------|-----------------------|--------------|------------------|-----|-----------|-----------|------------|----------------------------------|
| | | (A) | (A) | (V _{DC}) | (V _{AC RMS}) | (DC _{ADC}) | (AC _{ARMS}) | | (A) | (s) | | | | |
| RXEF – 60V | | | | | | | | | | | | | | |
| RXEF005 | RF2577-000 | 0.05 | 0.10 | 60 | – | 40 | – | 0.22 | 0.25 | 5.0 | 7.3 | 11.10 | 20.00 | 0.128/26 |
| RXEF010 | RF2579-000 | 0.10 | 0.20 | 60 | – | 40 | – | 0.38 | 0.50 | 4.0 | 2.5 | 4.50 | 7.50 | 0.205/24 |
| RXEF017 | RF2563-000 | 0.17 | 0.34 | 60 | – | 40 | – | 0.48 | 0.85 | 3.0 | 3.3 | 5.21 | 8.00 | 0.205/24 |

Notes:

I_H : Hold current: maximum current device will pass without interruption in 20°C still air.
 I_T : Trip current: minimum current that will switch the device from low resistance to high resistance in 20°C still air.
 V_{MAX} : Maximum continuous voltage device can withstand without damage at rated current.
 I_{MAX} : Maximum fault current device can withstand without damage at rated voltage.
 P_D : Power dissipated from device when in the tripped state in 20°C still air.

R_{MIN} : Minimum resistance of device as supplied at 20°C unless otherwise specified.
 R_{MAX} : Maximum resistance of device as supplied at 20°C unless otherwise specified.
 R_{1MAX} : Maximum resistance of device when measured one hour post reflow (surface-mount device) or one hour post trip (radial-leaded device) at 20°C unless otherwise specified.

* Electrical characteristics determined at 25°C.

RXEF Series

Radial Leaded

Electrical Characteristics (Cont'd)

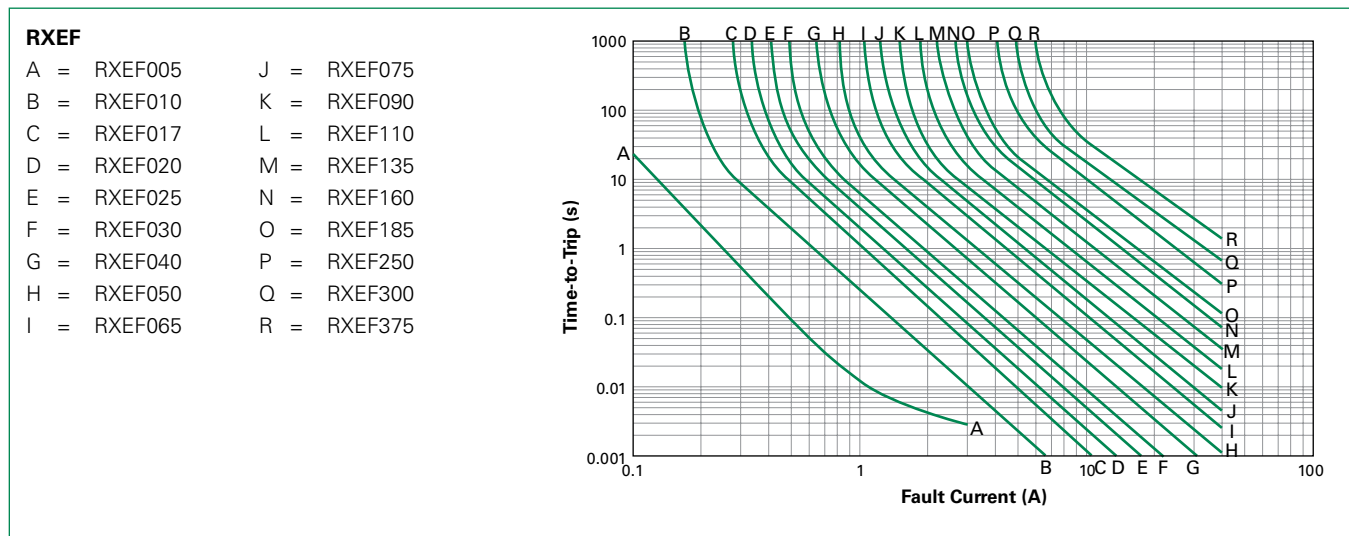
| Part Number | Ordering Part Number | I_H | I_T | V_{MAX} | | I_{MAX} | | $P_{D\ TYP}$ (W) | Max Time-to-trip | | R_{MIN} (Ω) | R_{MAX} (Ω) | R_{1MAX} (Ω) | Lead Size (mm ² /AWG) |
|-------------|----------------------|-------|-------|--------------------|------------------------|----------------------|-----------------------|---------------------|------------------|------|---------------------------|---------------------------|----------------------------|-------------------------------------|
| | | (A) | (A) | (V _{DC}) | (V _{AC RMS}) | (DC _{ADC}) | (AC _{ARMS}) | | (A) | (s) | | | | |
| RXEF – 72V | | | | | | | | | | | | | | |
| RXEF020 | RF2564-000 | 0.20 | 0.40 | 72 | 72 | 40 | 40 | 0.41 | 1.00 | 2.2 | 1.83 | 2.75 | 4.40 | 0.205/24 |
| RXEF025 | RF2628-000 | 0.25 | 0.50 | 72 | 72 | 40 | 40 | 0.45 | 1.25 | 2.5 | 1.25 | 1.95 | 3.00 | 0.205/24 |
| RXEF030 | RF2565-000 | 0.30 | 0.60 | 72 | 72 | 40 | 40 | 0.49 | 1.50 | 3.0 | 0.88 | 1.33 | 2.10 | 0.205/24 |
| RXEF040 | RF2566-000 | 0.40 | 0.80 | 72 | 72 | 40 | 40 | 0.56 | 2.00 | 3.8 | 0.55 | 0.86 | 1.29 | 0.205/24 |
| RXEF050 | RF2567-000 | 0.50 | 1.00 | 72 | 72 | 40 | 40 | 0.77 | 2.50 | 4.0 | 0.50 | 0.77 | 1.17 | 0.205/24 |
| RXEF065 | RF2568-000 | 0.65 | 1.30 | 72 | 72 | 40 | 40 | 0.88 | 3.25 | 5.3 | 0.31 | 0.48 | 0.72 | 0.205/24 |
| RXEF075 | RF2569-000 | 0.75 | 1.50 | 72 | 72 | 40 | 40 | 0.92 | 3.75 | 6.3 | 0.25 | 0.40 | 0.60 | 0.205/24 |
| RXEF090 | RF2571-000 | 0.90 | 1.80 | 72 | 72 | 40 | 40 | 0.99 | 4.50 | 7.2 | 0.20 | 0.31 | 0.47 | 0.205/24 |
| RXEF110 | RF2623-000 | 1.10 | 2.20 | 72 | 72 | 40 | 40 | 1.50 | 5.50 | 8.2 | 0.15 | 0.25 | 0.38 | 0.520/20 |
| RXEF135 | RF2640-000 | 1.35 | 2.70 | 72 | 72 | 40 | 40 | 1.70 | 6.75 | 9.6 | 0.12 | 0.19 | 0.30 | 0.520/20 |
| RXEF160 | RF2637-000 | 1.60 | 3.20 | 72 | 72 | 40 | 40 | 1.90 | 8.00 | 11.4 | 0.09 | 0.14 | 0.22 | 0.520/20 |
| RXEF185 | RF2635-000 | 1.85 | 3.70 | 72 | 72 | 40 | 40 | 2.10 | 9.25 | 12.6 | 0.08 | 0.12 | 0.19 | 0.520/20 |
| RXEF250 | RF2649-000 | 2.50 | 5.00 | 72 | 72 | 40 | 40 | 2.50 | 12.50 | 15.6 | 0.05 | 0.08 | 0.13 | 0.520/20 |
| RXEF300 | RF2650-000 | 3.00 | 6.00 | 72 | 72 | 40 | 40 | 2.80 | 15.00 | 19.8 | 0.04 | 0.06 | 0.10 | 0.520/20 |
| RXEF375 | RF2647-000 | 3.75 | 7.50 | 72 | 72 | 40 | 40 | 3.20 | 18.75 | 24.0 | 0.03 | 0.05 | 0.08 | 0.520/20 |

Notes:

I_H : Hold current: maximum current device will pass without interruption in 20°C still air.
 I_T : Trip current: minimum current that will switch the device from low resistance to high resistance in 20°C still air.
 V_{MAX} : Maximum continuous voltage device can withstand without damage at rated current.
 I_{MAX} : Maximum fault current device can withstand without damage at rated voltage.
 P_D : Power dissipated from device when in the tripped state in 20°C still air.

R_{MIN} : Minimum resistance of device as supplied at 20°C unless otherwise specified.
 R_{MAX} : Maximum resistance of device as supplied at 20°C unless otherwise specified.
 R_{1MAX} : Maximum resistance of device when measured one hour post reflow (surface-mount device) or one hour post trip (radial-leaded device) at 20°C unless otherwise specified.
 * Electrical characteristics determined at 25°C.

Typical Time-to-Trip Curves at 20°C



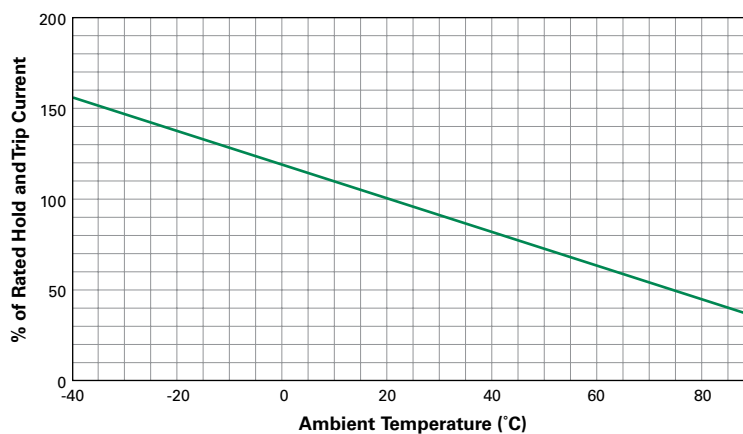
RXEF Series

Radial Leaded

Temperature Rerating

| Maximum Ambient Temperature | | | | | | | | | | |
|-----------------------------|-------|-------|------|------|-------|------|-------|-------|-------|------|
| | -40°C | -20°C | 0°C | 20°C | 25°C | 40°C | 50°C | 60°C | 70°C | 85°C |
| Hold Current (A) | | | | | | | | | | |
| RXEF – 60V | | | | | | | | | | |
| RXEF005 | 0.078 | 0.068 | 0.06 | 0.05 | 0.048 | 0.04 | 0.035 | 0.032 | 0.027 | 0.02 |
| RXEF010 | 0.160 | 0.140 | 0.11 | 0.10 | 0.096 | 0.08 | 0.072 | 0.067 | 0.050 | 0.04 |
| RXEF017 | 0.260 | 0.230 | 0.21 | 0.17 | 0.160 | 0.14 | 0.120 | 0.110 | 0.090 | 0.07 |
| RXEF – 72V | | | | | | | | | | |
| RXEF020 | 0.31 | 0.27 | 0.24 | 0.20 | 0.19 | 0.16 | 0.14 | 0.13 | 0.11 | 0.08 |
| RXEF025 | 0.39 | 0.34 | 0.30 | 0.25 | 0.24 | 0.20 | 0.18 | 0.16 | 0.14 | 0.10 |
| RXEF030 | 0.47 | 0.41 | 0.36 | 0.30 | 0.29 | 0.24 | 0.22 | 0.20 | 0.16 | 0.12 |
| RXEF040 | 0.62 | 0.54 | 0.48 | 0.40 | 0.38 | 0.32 | 0.29 | 0.25 | 0.22 | 0.16 |
| RXEF050 | 0.78 | 0.68 | 0.60 | 0.50 | 0.48 | 0.41 | 0.36 | 0.32 | 0.27 | 0.20 |
| RXEF065 | 1.01 | 0.88 | 0.77 | 0.65 | 0.62 | 0.53 | 0.47 | 0.41 | 0.35 | 0.26 |
| RXEF075 | 1.16 | 1.02 | 0.89 | 0.75 | 0.72 | 0.61 | 0.54 | 0.47 | 0.41 | 0.30 |
| RXEF090 | 1.40 | 1.22 | 1.07 | 0.90 | 0.86 | 0.73 | 0.65 | 0.57 | 0.49 | 0.36 |
| RXEF110 | 1.71 | 1.50 | 1.31 | 1.10 | 1.06 | 0.89 | 0.79 | 0.69 | 0.59 | 0.44 |
| RXEF135 | 2.09 | 1.84 | 1.61 | 1.35 | 1.30 | 1.09 | 0.97 | 0.85 | 0.73 | 0.54 |
| RXEF160 | 2.48 | 2.18 | 1.90 | 1.60 | 1.54 | 1.30 | 1.15 | 1.01 | 0.86 | 0.64 |
| RXEF185 | 2.87 | 2.52 | 2.20 | 1.85 | 1.78 | 1.50 | 1.33 | 1.17 | 1.00 | 0.74 |
| RXEF250 | 3.88 | 3.40 | 2.98 | 2.50 | 2.40 | 2.03 | 1.80 | 1.58 | 1.35 | 1.00 |
| RXEF300 | 4.65 | 4.08 | 3.57 | 3.00 | 2.88 | 2.43 | 2.16 | 1.89 | 1.62 | 1.20 |
| RXEF375 | 5.81 | 5.10 | 4.46 | 3.75 | 3.60 | 3.04 | 2.70 | 2.36 | 2.03 | 1.50 |

Temperature Rerating Curve



RXEF Series

Radial Leaded

Physical Specifications

| | |
|----------------------------------|---|
| Lead Material | RXEF005: Tin-plated Nickel-copper Alloy, 0.128mm ² (26AWG), ø0.40mm (0.016in) RXEF010: Tin-plated Nickel-copper Alloy, 0.205mm ² (24AWG), ø0.51mm (0.020in) RXEF017 to 040: Tin-plated Copper-clad Steel, 0.205mm ² (24AWG), ø0.51mm (0.020in) RXEF050 to 090 : Tin-plated Copper, 0.205mm ² (24AWG), ø0.51mm (0.020in) RXEF110 to 375: Tin-plated Copper, 0.52mm ² (20AWG), ø0.81mm (0.032in) |
| Soldering Characteristics | Solderability per ANSI/J-STD-002 Category 3 RXEF005, RXEF010 Meet ANSI/J-STD-002 Category 1 |
| Solder Heat Withstand | RXEF005- RXEF025: per IEC-STD 68-2-20, Test Tb, Method 1a, Condition a; Can Withstand 5s at 260°C ±5°C All Other Sizes: per IEC-STD 68-2-20, Test Tb, Method 1a, Condition b; Can Withstand 10s at 260°C ±5°C |
| Insulating Material | Cured, Flame-retardant Epoxy Polymer; Meets UL 94V-0 |
| Operation Temperature | -40°C~85°C |

Note: Devices are not designed to be placed through a reflow process.

Environmental Specifications

| Test | Conditions | Resistance Change |
|----------------------------------|--|-------------------|
| Passive Aging | -40°C, 1000 hrs | ±5% |
| | 85°C, 1000 hrs | ±5% |
| Humidity Aging | 85°C, 85% R.H., 1000 hrs | ±10% |
| Thermal Shock | 85°C to -40°C 10 times | ±10% |
| Solvent Resistance | MIL-STD-202, Method 215F | No change |
| Moisture Resistance Level | Level 1, J-STD-020 | |
| Storage Conditions | 40°C max, 70% RH max; devices should remain in original sealed bags prior to use. Devices may not meet specified values if these storage conditions are exceeded. | |

RXEF Series

Radial Leaded

Dimension Figures

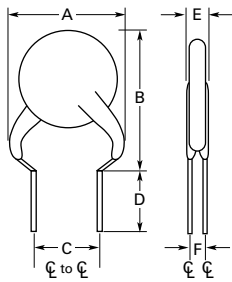


Figure 1

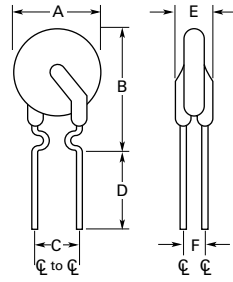


Figure 2

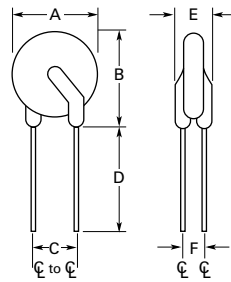


Figure 3

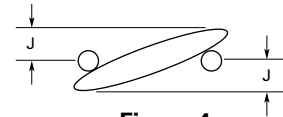


Figure 4

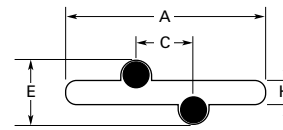


Figure 5

Dimensions and Weights

| Part Number | Dimensions in Millimeters (Inches) | | | | | | | | | | | | Figure | Device Mass (g) (Only for Reference) | |
|-------------------|------------------------------------|----------------|-----|----------------|---------------|---------------|---------------|-----|-----|---------------|-----------------|---------------|--------|---|--|
| | A | | B | | C | | D | | E | | H | J | | | |
| | Min | Max | Min | Max | Min | Max | Min | Max | Min | Max | Typ | Typ | | | |
| RXEF – 60V | | | | | | | | | | | | | | | |
| RXEF005 | — | 8.0 (0.32) | — | 8.3 (0.33) | 4.3 (0.17) | 5.8 (0.23) | 7.6 (0.30) | — | — | 3.0 (0.12) | 1.07 (0.042) | 1.0 (0.04) | 1,4,5 | 0.069 | |
| RXEF010 | — | 7.4 (0.29) | — | 11.6 (0.46) | 4.3 (0.17) | 5.8 (0.23) | 7.6 (0.30) | — | — | 3.0 (0.12) | 1.07 (0.042) | 1.0 (0.04) | 2,4,5 | 0.128 | |
| RXEF017 | — | 7.4 (0.29) | — | 12.7 (0.50) | 4.3 (0.17) | 5.8 (0.23) | 7.6 (0.30) | — | — | 3.0 (0.12) | 1.68 (0.066) | 1.7 (0.07) | 2,4,5 | 0.174 | |
| RXEF – 72V | | | | | | | | | | | | | | | |
| RXEF020 | — | 7.4 (0.29) | — | 11.7 (0.46) | 4.3 (0.17) | 5.8 (0.23) | 7.6 (0.30) | — | — | 3.0 (0.12) | 1.17 (0.046) | 1.0 (0.04) | 2,4,5 | 0.119 | |
| RXEF025 | — | 7.4 (0.29) | — | 12.7 (0.50) | 4.3 (0.17) | 5.8 (0.23) | 7.6 (0.30) | — | — | 3.0 (0.12) | 1.17 (0.046) | 1.0 (0.04) | 2,4,5 | 0.130 | |
| RXEF030 | — | 7.4 (0.29) | — | 12.7 (0.50) | 4.3 (0.17) | 5.8 (0.23) | 7.6 (0.30) | — | — | 3.0 (0.12) | 1.17 (0.046) | 1.0 (0.04) | 2,4,5 | 0.143 | |
| RXEF040 | — | 7.6 (0.30) | — | 13.5 (0.53) | 4.3 (0.17) | 5.8 (0.23) | 7.6 (0.30) | — | — | 3.0 (0.12) | 1.17 (0.046) | 1.2 (0.05) | 2,4,5 | 0.202 | |
| RXEF050 | — | 7.9 (0.31) | — | 13.7 (0.54) | 4.3 (0.17) | 5.8 (0.23) | 7.6 (0.30) | — | — | 3.0 (0.12) | 1.17 (0.046) | 1.2 (0.05) | 2,4,5 | 0.210 | |
| RXEF065 | — | 9.4 (0.37) | — | 14.5 (0.57) | 4.3 (0.17) | 5.8 (0.23) | 7.6 (0.30) | — | — | 3.0 (0.12) | 1.17 (0.046) | 1.5 (0.06) | 2,4,5 | 0.277 | |
| RXEF075 | — | 10.2 (0.40) | — | 15.2 (0.60) | 4.3 (0.17) | 5.8 (0.23) | 7.6 (0.30) | — | — | 3.0 (0.12) | 1.17 (0.046) | 1.5 (0.06) | 2,4,5 | 0.310 | |
| RXEF090 | — | 11.2 (0.44) | — | 15.8 (0.62) | 4.3 (0.17) | 5.8 (0.23) | 7.6 (0.30) | — | — | 3.0 (0.12) | 1.17 (0.046) | 1.5 (0.06) | 2,4,5 | 0.365 | |

RXEF Series

Radial Leaded

Dimension Figures

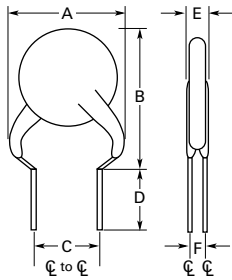


Figure 1

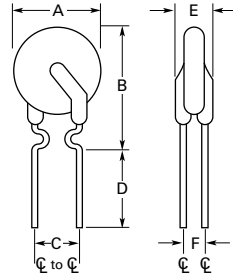


Figure 2

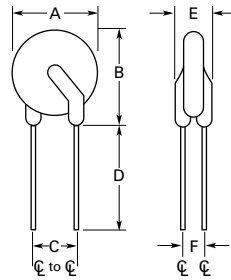


Figure 3



Figure 4

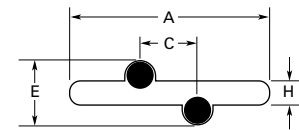


Figure 5

Dimensions and Weights (Cont'd)

| Part Number | Dimensions in Millimeters (Inches) | | | | | | | | | | | | Figure | Device Mass (g) (Only for Reference) |
|-------------------|------------------------------------|----------------|-----|----------------|---------------|----------------|---------------|-----|-----|---------------|-----------------|---------------|--------|---|
| | A | | B | | C | | D | | E | | H | J | | |
| | Min | Max | Min | Max | Min | Max | Min | Max | Min | Max | Typ | Typ | | |
| RXEF – 72V | | | | | | | | | | | | | | |
| RXEF110 | — | 12.8 (0.50) | — | 17.5 (0.69) | 4.3 (0.17) | 5.8 (0.23) | 7.6 (0.30) | — | — | 3.0 (0.12) | 1.37 (0.054) | 1.2 (0.05) | 3,4,5 | 0.546 |
| RXEF135 | — | 14.5 (0.57) | — | 19.1 (0.75) | 4.3 (0.17) | 5.8 (0.23) | 7.6 (0.30) | — | — | 3.0 (0.12) | 1.37 (0.054) | 1.2 (0.05) | 3,4,5 | 0.653 |
| RXEF160 | — | 16.3 (0.64) | — | 20.8 (0.82) | 4.3 (0.17) | 5.8 (0.23) | 7.6 (0.30) | — | — | 3.0 (0.12) | 1.37 (0.054) | 1.5 (0.06) | 3,4,5 | 0.684 |
| RXEF185 | — | 17.5 (0.69) | — | 22.4 (0.88) | 4.3 (0.17) | 5.8 (0.23) | 7.6 (0.30) | — | — | 3.0 (0.12) | 1.37 (0.054) | 1.5 (0.06) | 3,4,5 | 0.808 |
| RXEF250 | — | 20.8 (0.82) | — | 25.4 (1.00) | 9.4 (0.37) | 10.9 (0.43) | 7.6 (0.30) | — | — | 3.0 (0.12) | 1.37 (0.054) | 1.7 (0.07) | 3,4,5 | 1.139 |
| RXEF300 | — | 23.9 (0.94) | — | 28.6 (1.13) | 9.4 (0.37) | 10.9 (0.43) | 7.6 (0.30) | — | — | 3.0 (0.12) | 1.37 (0.054) | 1.7 (0.07) | 3,4,5 | 1.379 |
| RXEF375 | — | 27.2 (1.07) | — | 31.8 (1.25) | 9.4 (0.37) | 10.9 (0.43) | 7.6 (0.30) | — | — | 3.0 (0.12) | 1.37 (0.054) | 1.7 (0.07) | 3,4,5 | 1.708 |

RXEF Series

Radial Leaded

Packaging and Marking Information

| Part Number | Bag Quantity | Tape and Reel Quantity | Ammo Pack Quantity | Standard Package Quantity | Part Marking | Agency Recognition |
|-------------------|--------------|------------------------|--------------------|---------------------------|--------------|--------------------|
| RXEF – 60V | | | | | | |
| RXEF005 | 500 | — | — | 10,000 | — | UL, CSA, TÜV, CQC |
| RXEF005-2 | — | 3,000 | — | 15,000 | — | UL, CSA, TÜV, CQC |
| RXEF005-AP | — | — | 2,000 | 10,000 | — | UL, CSA, TÜV, CQC |
| RXEF010 | 500 | — | — | 10,000 | X10 | UL, CSA, TÜV, CQC |
| RXEF010-2 | — | 3,000 | — | 15,000 | X10 | UL, CSA, TÜV, CQC |
| RXEF010-AP | — | — | 2,000 | 10,000 | X10 | UL, CSA, TÜV, CQC |
| RXEF017 | 500 | — | — | 10,000 | X17 | UL, CSA, TÜV, CQC |
| RXEF017-2 | — | 2,500 | — | 12,500 | X17 | UL, CSA, TÜV, CQC |
| RXEF017-AP | — | — | 2,000 | 10,000 | X17 | UL, CSA, TÜV, CQC |
| RXEF – 72V | | | | | | |
| RXEF020 | 500 | — | — | 10,000 | X20 | UL, CSA, TÜV, CQC |
| RXEF020-2 | — | 3,000 | — | 15,000 | X20 | UL, CSA, TÜV, CQC |
| RXEF020-AP | — | — | 2,000 | 10,000 | X20 | UL, CSA, TÜV, CQC |
| RXEF025 | 500 | — | — | 10,000 | X25 | UL, CSA, TÜV, CQC |
| RXEF025-2 | — | 3,000 | — | 15,000 | X25 | UL, CSA, TÜV, CQC |
| RXEF025-AP | — | — | 2,000 | 10,000 | X25 | UL, CSA, TÜV, CQC |
| RXEF030 | 500 | — | — | 10,000 | X30 | UL, CSA, TÜV, CQC |
| RXEF030-2 | — | 3,000 | — | 15,000 | X30 | UL, CSA, TÜV, CQC |
| RXEF030-AP | — | — | 2,000 | 10,000 | X30 | UL, CSA, TÜV, CQC |
| RXEF040 | 500 | — | — | 10,000 | X40 | UL, CSA, TÜV, CQC |
| RXEF040-2 | — | 3,000 | — | 15,000 | X40 | UL, CSA, TÜV, CQC |
| RXEF040-AP | — | — | 2,000 | 10,000 | X40 | UL, CSA, TÜV, CQC |
| RXEF050 | 500 | — | — | 10,000 | X50 | UL, CSA, TÜV, CQC |
| RXEF050-2 | — | 3,000 | — | 15,000 | X50 | UL, CSA, TÜV, CQC |
| RXEF050-AP | — | — | 2,000 | 10,000 | X50 | UL, CSA, TÜV, CQC |
| RXEF065 | 500 | — | — | 10,000 | X65 | UL, CSA, TÜV, CQC |
| RXEF065-2 | — | 3,000 | — | 15,000 | X65 | UL, CSA, TÜV, CQC |
| RXEF065-AP | — | — | 2,000 | 10,000 | X65 | UL, CSA, TÜV, CQC |
| RXEF075 | 500 | — | — | 10,000 | X75 | UL, CSA, TÜV, CQC |
| RXEF075-2 | — | 3,000 | — | 15,000 | X75 | UL, CSA, TÜV, CQC |
| RXEF075-AP | — | — | 2,000 | 10,000 | X75 | UL, CSA, TÜV, CQC |
| RXEF090 | 500 | — | — | 10,000 | X90 | UL, CSA, TÜV, CQC |
| RXEF090-2 | — | 3,000 | — | 15,000 | X90 | UL, CSA, TÜV, CQC |
| RXEF090-AP | — | — | 2,000 | 10,000 | X90 | UL, CSA, TÜV, CQC |
| RXEF110 | 500 | — | — | 10,000 | X110 | UL, CSA, TÜV, CQC |
| RXEF110-2 | — | 1,500 | — | 7,500 | X110 | UL, CSA, TÜV, CQC |
| RXEF110-AP | — | — | 1,000 | 5,000 | X110 | UL, CSA, TÜV, CQC |

RXEF Series

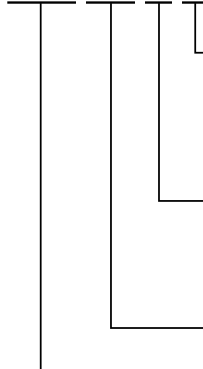
Radial Leaded

Packaging and Marking Information (Cont'd)

| Part Number | Bag Quantity | Tape and Reel Quantity | Ammo Pack Quantity | Standard Package Quantity | Part Marking | Agency Recognition |
|-------------------|--------------|------------------------|--------------------|---------------------------|--------------|--------------------|
| RXEF – 72V | | | | | | |
| RXEF135 | 500 | — | — | 10,000 | X135 | UL, CSA, TÜV, CQC |
| RXEF135-2 | — | 1,500 | — | 7,500 | X135 | UL, CSA, TÜV, CQC |
| RXEF135-AP | — | — | 1,000 | 5,000 | X135 | UL, CSA, TÜV, CQC |
| RXEF160 | 500 | — | — | 10,000 | X160 | UL, CSA, TÜV, CQC |
| RXEF160-2 | — | 1,500 | — | 7,500 | X160 | UL, CSA, TÜV, CQC |
| RXEF160-AP | — | — | 1,000 | 5,000 | X160 | UL, CSA, TÜV, CQC |
| RXEF185 | 500 | — | — | 10,000 | X185 | UL, CSA, TÜV, CQC |
| RXEF185-2 | — | 1,500 | — | 7,500 | X185 | UL, CSA, TÜV, CQC |
| RXEF185-AP | — | — | 1,000 | 5,000 | X185 | UL, CSA, TÜV, CQC |
| RXEF250 | 250 | — | — | 5,000 | X250 | UL, CSA, TÜV, CQC |
| RXEF250-2 | — | 1,000 | — | 5,000 | X250 | UL, CSA, TÜV, CQC |
| RXEF250-AP | — | — | 1,000 | 5,000 | X250 | UL, CSA, TÜV, CQC |
| RXEF300 | 250 | — | — | 5,000 | X300 | UL, CSA, TÜV, CQC |
| RXEF300-2 | — | 1,000 | — | 5,000 | X300 | UL, CSA, TÜV, CQC |
| RXEF300-AP | — | — | 1,000 | 5,000 | X300 | UL, CSA, TÜV, CQC |
| RXEF375 | 250 | — | — | 5,000 | X375 | UL, CSA, TÜV, CQC |

Part Ordering Number System

RXEF 250 U 2



- Packaging**
 Blank = Packaged in Bags
 -1 = 25.4mm (1.0 in) Minimum Lead Length
 -2 = Tape and Reel
 -AP = Ammo Pack
 -X.X = Special Lead Cut Length (in)
- Modifier**
 K = Standard Kinked Lead
 B = Special Kinked Lead
 S = Straight Lead
 U = Uncoated Device
- Hold Current Indicator**
- Product Series**
 An "F" at the end of product series indicates Pb-free version of product.

Note: Kinked parts are recommended to control the height of the part on the PCB in non-auto PCB applications.

RXEF Series

Radial Ledged

Tape and Reel Specifications

RXEF devices are available in tape and reel packaging per EIA468-B/IEC60286-2 standards. See Figures 1 and 2 for details.

| Description | EIA Mark | Dimension (mm) | Tolerance |
|---|----------------|----------------|------------|
| Carrier Tape Width | W | 18 | -0.5/+1.0 |
| Hold-Down Tape Width | W ₄ | 11 | Minimum |
| Top Distance between Tape Edges | W ₆ | 3 | Maximum |
| Sprocket Hole Position | W ₅ | 9 | -0.5/+0.75 |
| Sprocket Hole Diameter | D ₀ | 4 | ± 0.2 |
| Abscissa to Plane (Straight Lead) (RXEF110 To RXEF300) | H | 18.5 | ± 2.5 |
| Abscissa to Plane (Kinked Lead) (RXEF010 To RXEF090) | H ₀ | 16.0 | ± 0.5 |
| Abscissa to Top (RXEF010 To RXEF090) | H ₁ | 32.2 | Maximum |
| Abscissa to Top* (RXEF110 To RXEF300) | H ₁ | 47.5 | Maximum |
| Overall Width with Lead Protrusion (RXEF010 To RXEF090) | C ₁ | 43.2 | Maximum |
| Overall Width with Lead Protrusion* (RXEF110 To RXEF300) | C ₁ | 58 | Maximum |
| Overall Width without Lead Protrusion (RXEF010 To RXEF090) | C ₂ | 42.5 | Maximum |
| Overall Width without Lead Protrusion* (RXEF110 To RXEF300) | C ₂ | 57.0 | Maximum |
| Lead Protrusion | L ₁ | 1.0 | Maximum |
| Protrusion of Cut-Out | L | 11.0 | Maximum |
| Protrusion beyond Hold-down Tape | I ₂ | Not Specified | — |
| Sprocket Hole Pitch | P ₀ | 12.7 | ± 0.3 |
| Device Pitch (RXEF010 To RXEF090) | — | 12.7 | ± 0.3 |
| Device Pitch (RXEF110 To RXEF300) | — | 25.4 | ± 0.61 |
| Pitch Tolerance | — | 20 Consecutive | ± 1 |
| Tape Thickness | T | 0.9 | Maximum |
| Overall Tape and Lead Thickness (RXEF010 To RXEF090) | T ₁ | 1.5 | Maximum |
| Overall Tape and Lead Thickness (RXEF110 To RXEF300) | T ₁ | 2.3 | Maximum |
| Splice Sprocket Hole Alignment | — | 0 | ± 0.3 |
| Body Lateral Deviation | dh | 0 | ± 1.0 |
| Body Tape Plane Deviation | dp | 0 | ± 1.3 |
| Ordinate to Adjacent Component Lead (RXEF010 To RXEF185) | P ₁ | 3.81 | ± 0.7 |
| Ordinate to Adjacent Component Lead (RXEF250 To RXEF300) | P ₁ | 7.62 | ± 0.7 |
| Lead Spacing* (RXEF010 To RXEF185) | F | 5.05 | ± 0.75 |
| Lead Spacing* (RXEF250 To RXEF300) | F | 10.15 | ± 0.75 |
| Reel Width (RXEF010 To RXEF090) | W ₂ | 56.0 | Maximum |
| Reel Width* (RXEF110 To RXEF300) | W ₂ | 63.5 | Maximum |
| Reel Diameter | A | 370.0 | Maximum |
| Space between Flanges* (RXEF010 To RXEF090) | W ₁ | 48.0 | Maximum |
| Space between Flanges* (RXEF110 To RXEF300) | W ₁ | 55.0 | Maximum |
| Arbor Hold Diameter | C | 26.0 | ± 12.0 |
| Core Diameter* | N | 91.0 | Maximum |
| Box | — | 64/372/362 | Maximum |
| Consecutive Missing Places | — | None | — |
| Empty Places per Reel | — | 0.1% | Maximum |

*Differs from EIA specification.

RXEF Series

Radial Leaded

Tape and Reel Diagrams

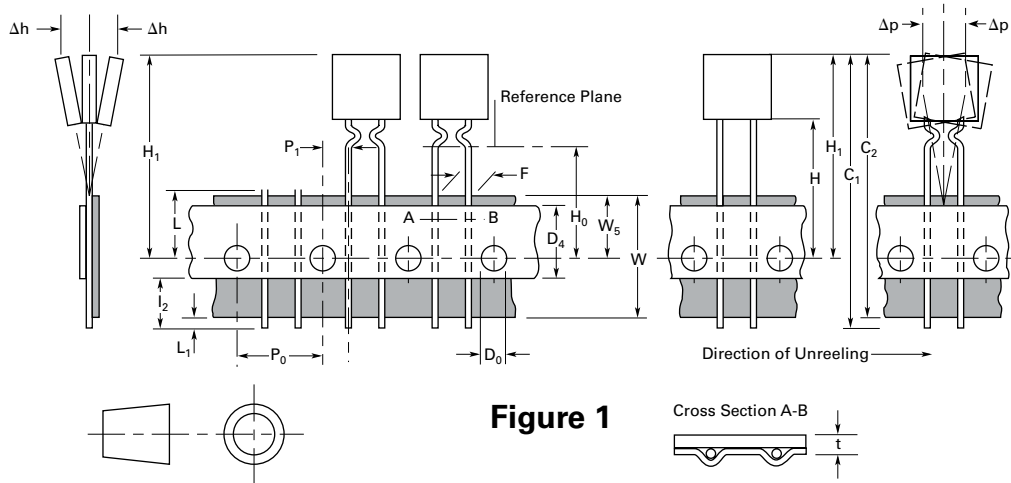


Figure 1

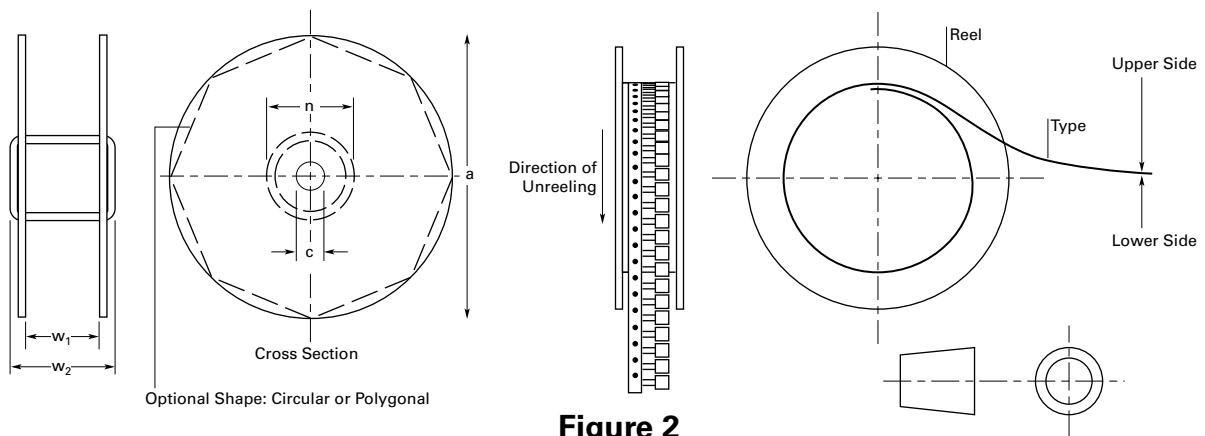


Figure 2

Warning

- Users should independently evaluate the suitability of and test each product selected for their own application.
- Operation beyond the maximum ratings or improper use may result in device damage and possible electrical arcing and flame.
- These devices are intended for protection against damage caused by occasional overcurrent or overtemperature fault conditions and should not be used when repeated fault conditions or prolonged trip events are anticipated.
- Contamination of the PPTC material with certain silicone-based oils or some aggressive solvents can adversely impact the performance of the devices.
- Device performance can be impacted negatively if devices are handled in a manner inconsistent with recommended electronic, thermal, and mechanical procedures for electronic components.
- PPTC devices are not recommended for installation in applications where the device is constrained such that its PTC properties are inhibited, for example in rigid potting materials or in rigid housings, which lack adequate clearance to accommodate device expansion.
- Operation in circuits with a large inductance can generate a circuit voltage (Ldi/dt) above the rated voltage of the device.

Disclaimer Notice - Information furnished is believed to be accurate and reliable. However, users should independently evaluate the suitability of and test each product selected for their own applications. Littelfuse products are not designed for, and may not be used in, all applications. Read complete Disclaimer Notice at www.littelfuse.com/disclaimer-electronics.