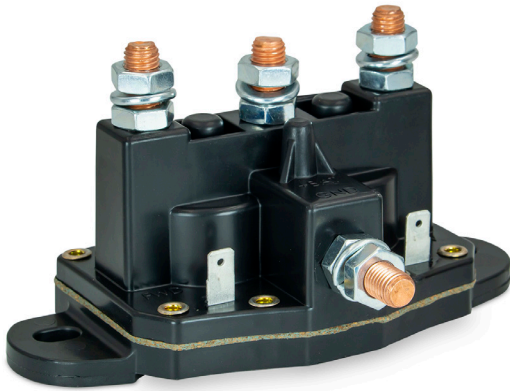


REVERSING SOLENOIDS SERIES

12 V DC and 24 V DC 75 A Motor Reversing Intermittent-Duty Solenoid Relays with Dynamic Braking



24450-02

Description

Designed for reversing motors such as those used to operate winches, hoists, windlasses, and snowplow blades, the Reversing Solenoids Series 75 A Motor Reversing Intermittent-Duty Solenoid Relay integrates two solenoids into one product for cost and space savings and simpler wiring. The two integral solenoids provide dynamic braking for permanent magnet motors when neither coil is energized.

The motor reversing solenoid relay is available with either a 12 V dc or 24 V dc common ground coil with blade terminals. For durability and protection against the harsh elements typically found in commercial automotive environments, the housing is made from glass-reinforced nylon.

Web Resources

Download 2D print, installation guide and technical resources at: littelfuse.com/Reversing-Solenoid

Specifications

| | |
|-----------------------------------|--|
| Max Voltage Rating: | 12 VDC, 24 VDC |
| Current Rating Continuous: | 75 A |
| Coil Voltage: | 12 VDC, 24 VDC |
| Coil Type: | Common Ground |
| Current Rating Inrush: | 125A @ 12VDC, 30 sec ON, 5 min OFF, 150A @ 12VDC, 5 sec ON, 5 min OFF |
| Temperature: | -40°C to 85°C |
| Circuitry: | DPDT |

Applications

- Winches
- Hoists
- Windlasses
- Snowplow Blades

Features and Benefits

- Intermittent-duty reversing solenoid with a 75 A make and break rating (maximum ON time of 5 minutes)
- Inrush current rating of 125 A @ 12 V dc, 30 seconds ON, 5 minutes OFF, 150 A @ 12 V dc, 5 seconds ON, 5 minutes OFF
- Double-pole, double-throw (DPDT) relay circuitry
- Available with 12 V dc or 24 V dc common ground coil with Quick Connect blade connectors
- Glass-reinforced nylon housing for use in commercial automotive environments
- 5/16"-24 copper contact studs with included lock washers and hex nuts

Ordering Information

| PART NUMBER | DESCRIPTION | HOUSING | HARDWARE | POWER TERMINALS | CONNECTOR | MOUNTING METHOD |
|-------------|---|-------------------------|--|-------------------------|---|--|
| 24450 | 12 V DC Motor Reversing Solenoid Relay | Nylon, Glass reinforced | Assembled, 4x 5/16-24 Hex Nuts 4x Lock Washers | Copper Studs 5/16-24 | .250" Quick Connect Blade Terminals (for coil only) | Mounting Brackets w/ 2x0.274" holes |
| 24450-BP | 12 V DC Motor Reversing Solenoid Relay - Blister Pack | Nylon, Glass reinforced | Assembled, 4x 5/16-24 Hex Nuts 4x Lock Washers | Copper Studs 5/16-24 | .250" Quick Connect Blade Terminals (for coil only) | Mounting Brackets w/ 2x0.274" holes |
| 24450-BX | 12 V DC Motor Reversing Solenoid Relay - Boxed | Nylon, Glass reinforced | Assembled, 4x 5/16-24 Hex Nuts 4x Lock Washers | Copper Studs 5/16-24 | .250" Quick Connect Blade Terminals (for coil only) | Mounting Brackets w/ 2x0.274" holes |
| 24450-02 | 24 V DC Motor Reversing Solenoid Relay | Nylon, Glass reinforced | Assembled, 4x 5/16-24 Hex Nuts 4x Lock Washers | Copper Studs 5/16-24 | .250" Quick Connect Blade Terminals (for coil only) | Mounting Brackets w/ 2x0.274" holes |